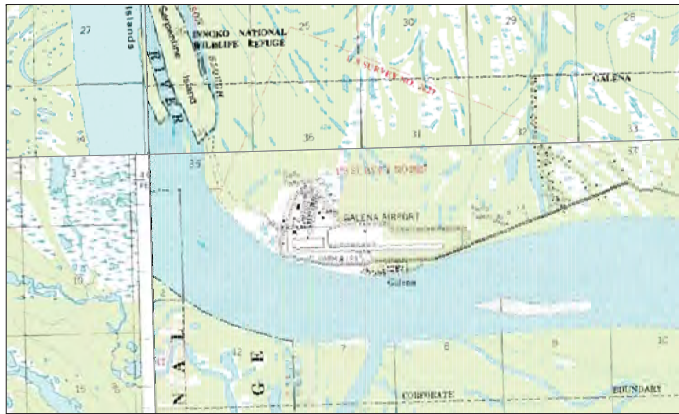


LOCATION MAP

# EDWARD G. PITKA, SR AIRPORT AIRPORT LAYOUT PLAN GALENA, ALASKA



VICINITY MAP

T9S, R10E, SEC. 5 & 6; T9S, R9E,  
SEC. 1; T8S, R9E, SEC. 35 & 36; &  
T8S, R10E, SEC. 31 KATEEL RIVER  
MERIDIAN U.S.G.S. NULATO C-2, C-3,  
D-2, & D-3, ALASKA

LEGEND		
ITEM	EXISTING	ULTIMATE
BUILDING RESTRICTION LINE (BRL)		SAME
RUNWAY SAFETY AREA (RSA)		
RUNWAY OBSTACLE FREE ZONE (OFZ)		
RUNWAY OBJECT FREE AREA (ROFA)		
RUNWAY PROTECTION ZONE (RPZ)		
AIRPORT REFERENCE POINT (ARP)		
THRESHOLD LIGHTS		SAME
SUPPLEMENTAL WIND CONE		SAME
WIND CONE & SEGMENTED CIRCLE		SAME
AIRFIELD PAVEMENT		
ROTATING BEACON		
AWOS		SAME
SURVEY MONUMENT		SAME
ROADWAYS		SAME
BUILDING (ON-AIRPORT)		
BUILDING (OFF-AIRPORT)		SAME
FENCE		SAME
POWER LINE		SAME

SHEET INDEX	
SHEET NO.	DESCRIPTION
1	COVER SHEET
2	AIRPORT DATA SHEET (1 OF 2)
3	AIRPORT DATA SHEET (2 OF 2)
4	EXISTING/ULTIMATE AIRPORT LAYOUT PLAN R/W 8-26
5	INNER APPROACH SURFACE R/W 8
6	INNER APPROACH SURFACE R/W 26
7	INNER APPROACH SURFACE R/W 6-24
8	SURFACE OBSTRUCTION TABLE
9	AIRPORT AIRSPACE (FAR PART 77) PLAN
10	AIRPORT AIRSPACE (FAR PART 77) PROFILE
11	AIRPORT LAND USE
12	AIRPORT PROPERTY PLAN

DESIGN RH  
DRAWN JG  
CHECKED CL

STATE OF ALASKA  
DEPARTMENT OF TRANSPORTATION AND PUBLIC FACILITIES  
NORTHERN REGION-AVIATION

APPROVED:   
ALBERT M.L. BECK, P.E. DATE 7/14/2020  
PROJECT DELIVERY LEAD

AIRPORT LAYOUT PLAN CONDITIONAL APPROVAL SUBJECT TO  
ALP APPROVAL LETTER DATED 7/27/16  
FAA AIRSPACE REVIEW NUMBER: 2016-AAL-39-NRA

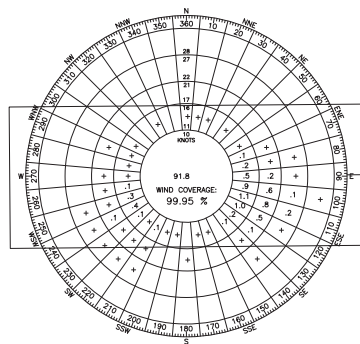
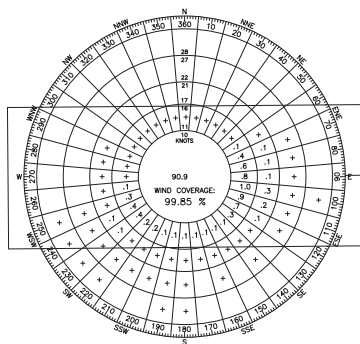
**As-Built Accepted**

DATE \_\_\_\_\_  
FAA, AIRPORTS DIVISION ALASKAN REGION, AAL- \_\_\_\_\_

DATE	BY	REVISIONS
MB MAY 2020		AS BUILT

EDWARD G. PITKA, SR AIRPORT  
GALENA, AK  
COVER SHEET

SHEET  
1 OF  
12



ALL-WEATHER

INSTRUMENT METEOROLOGICAL CONDITION

NOTES:

- THIS DRAWING SET IS A COMPILATION OF GROUND SURVEY AND AERIAL MAPPING DATA COLLECTED DURING THE 2020 SEASON IN SUPPORT OF FAA AERONAUTICAL SURVEY # 244409.
- THE HORIZONTAL COORDINATE SYSTEM FOR THIS PROJECT IS NAD 83 (2011)(EPOCH 2010.0000) ALASKA STATE PLANE ZONE 6, US FEET. VERTICAL DATUM FOR THIS PROJECT IN NAVD 88 (GEOID 12B).
- PACS AND SACS POSITIONS SHOWN IN HERE ARE BASED ON NATIONAL GEODETIC SURVEY (NGS) PUBLISHED POSITIONS.
- RUNWAY STATIONING WAS ESTABLISHED BASED ON THE STATIONING OF 2013 PROPERTY PLAN.
- RUNWAY 6-24 PROHIBITED FROM SIMULTANEOUS OPERATIONS WITH RUNWAY 8-26.

WIND DATA	
RUNWAY	8-26 (B-II)
CROSSWIND COMPONENT	16 KNOTS
WIND COVERAGE	99.85%

SOURCE: NATIONAL WEATHER SERVICE/MESOWEST STATION NAME: GALENA AIRPORT NETWORK ID: 702220 PERIOD: 2006-2015 SAMPLED IN MILES PER HOUR

AIRPORT DATA

ITEM	RUNWAY 8-26	
	EXISTING	ULTIMATE
ICAO IDENTIFIER	PAGA	SAME
NATIONAL AIRPORT IDENTIFIER	GAL	SAME
FAA SITE NUMBER	50258.*A	SAME
AIRPORT REFERENCE CODE (ARC)	B-III	SAME
AIRPORT REFERENCE POINT	64° 44' 10.28" N 156° 56' 04.40" W	SAME
NPIAS SERVICE LEVEL	SMALL / NON HUB	SAME
AIRPORT ELEVATION (NAVD88)	153.1'	SAME
MEAN MAX. TEMPERATURE, HOTTEST MONTH	67.9° F (JULY)	SAME
OBSTRUCTION SURVEY SOURCE & TYPE	FAA AOC, LOUNSBURY, 2019	SAME
MAGNETIC DECLINATION, YEAR, RATE OF CHANGE	12°33'E, 2019, 0°24"W PER YEAR	N/A
AIRPORT AND TERMINAL NAVIGATION AIDS	ROTATING BEACON, VOR/DME	SAME
MISCELLANEOUS FACILITIES	AWOS, LIGHTED WIND CONE, RUNWAY LIGHTING, TAXIWAY LIGHTING	SAME
AWOS CRITICAL AREA (DIA)	1000 FT	SAME
STATE EQUIVALENT ROLE	REGIONAL	SAME

RUNWAY DATA

ITEM	RUNWAY 8-26		RUNWAY 6-24	
	EXISTING	ULTIMATE	EXISTING	ULTIMATE
RUNWAY WIND COVERAGE % (ALL WEATHER):	16 KTS / 18 MPH		10 KTS / 12 MPH	
	99.85%	SAME	90.90%	SAME
FAR PART 77 APPROACH CATEGORY (UTILITY, OTHER THAN UTILITY)	OTHER THAN UTILITY	OTHER THAN UTILITY	UTILITY	SAME
FAR PART 77 APPROACH TYPE (V, C, NPA, PA)	NPA	SAME	V	SAME
FAR PART 77 APPROACH SLOPE	34:1	34:1	20:1	SAME
RUNWAY DESIGN CODE (RDC)	B-III-4000	SAME	A-I-VIS	SAME
APPROACH REFERENCE CODE (ARC)	B/III/4000	SAME	A/I/VIS	SAME
DEPARTURE REFERENCE CODE (DRC)	B/III	SAME	N/A	SAME
CRITICAL AIRCRAFT	DEHAVILLAND DHC-8	SAME	CESSNA 178	SAME
APPROACH TSS SLOPE	20:1	SAME	15:1	SAME
DEPARTURE SURFACE SLOPE	40:1	SAME	N/A	SAME
RUNWAY SURFACE MATERIAL TYPE	ASPHALT	SAME	GRAVEL	SAME
PAVEMENT STRENGTH (SW, DW, DTW x1000lbs)	110(S), 144(D), 240(DT)	SAME	N/A	SAME
PAVEMENT CLASSIFICATION NUMBER	62/F/C/X/T	N/A	N/A	SAME
TRUE MEAN BEARING	N 89°31'18" E	SAME	N 89°34'40" E	SAME
EFFECTIVE GRADE	0.10%	SAME	0.04%	SAME
RUNWAY END COORDINATES:				
LATITUDE (NAD 83)	64° 44' 09.41" N (08) / 64° 44' 09.91" N (26)	SAME	64° 44' 11.62" N (06) / 64° 44' 11.80" N (24)	SAME
LONGITUDE (NAD 83)	156° 57' 08.61" W (08) / 156° 54' 50.4" W (26)	SAME	156° 56' 45.62" W (06) / 156° 55' 45.73" W (24)	SAME
RUNWAY END ELEVATIONS (NAVD88)	149.18' (08) / 153.73' (26)	SAME	146.96 (06) / 148.26(24)	SAME
RUNWAY TOUCHDOWN ZONE ELEVATIONS (NAVD88)	151.70' (08) /153.14' (26)	SAME	148.34 (06 AND 24)	SAME
RUNWAY DIMENSIONS	100'x6000'	SAME	50'x2600'	SAME
DISPLACED THRESHOLD ELEVATIONS (NAVD88)	149.50' (08) / 153.14' (26)	SAME	N/A	SAME
DISPLACED THRESHOLD LATITUDE (NAD 83)	64° 44' 09.45" N (08) / 64° 44' 09.84" N (26)	SAME	N/A	SAME
DISPLACED THRESHOLD LONGITUDE (NAD 83)	156° 56' 59.39" W (08) / 156° 55' 08.84" W (26)	SAME	N/A	SAME
DISPLACED THRESHOLD DIMENSIONS	100'x4800'	SAME	N/A	SAME
RUNWAY SAFETY AREA (RSA) DIMENSIONS	300'x7200'	SAME	120'x3080'	SAME
RSA LENGTH BEYOND R/W ENDS	600'	SAME	240'	SAME
APPROACH RUNWAY PROTECTION ZONE (RPZ) DIMENSIONS	500'x1000'x700'	1000'x1700'x1510'	250'x1000'x450'	SAME
DEPARTURE RUNWAY PROTECTION ZONE (RPZ) DIMENSIONS	500'1000'x700'	SAME	250'x1000'x450'	SAME
RUNWAY OBJECT FREE AREA (ROFA) DIMENSIONS	800'x7200'	SAME	250'x3080'	SAME
ROFA LENGTH BEYOND R/W ENDS	600'	SAME	240'	SAME
RUNWAY OBSTACLE FREE ZONE (ROFZ) DIMENSIONS	400'x6400'	SAME	120'x3000'	SAME
RUNWAY LIGHTING TYPE	MIRL	SAME	NONE	SAME
RUNWAY MARKING TYPE (P, NP, NONE)	NP	SAME	NONE	SAME
RUNWAY VISUAL MINIMUMS (MILES)	1 MILE	≥ 3/4	VISUAL	SAME
TYPE OF AERONAUTICAL SURVEY REQUIRED	VGS	SAME	NVGS	SAME
RUNWAY VISUAL AND INSTRUMENT NAVAIDS	ROTATING BEACON, VOR/DME	SAME	NONE	SAME
TAXIWAY LIGHTING	MITL	MITL	NONE	SAME

TAXIWAY DATA TABLE

T/W	EXISTING					ULTIMATE				
	WIDTH	LENGTH	TSA WIDTH	TOFA	ADG/TDG	WIDTH	LENGTH	TSA WIDTH	TOFA	ADG/TDG
B	50'	555'	118'	186'	III/3	50'	625'	118'	186'	III/3
C	32'	110'	49'	89'	I/1	25'	550'	49'	89'	I/1
D	50'	551'	118'	186'	III/3	50'	550'	118'	186'	III/3
E	N/A	N/A	N/A	N/A	N/A	50'	603'	118'	186'	III/3
F	50'	3406'	118'	162'	III/3	50'	4539'	118'	162'	III/3
TAXILANE	50'	1719'	118'	162'	III/3	50'	1795'	118'	162'	III/3

DESIGN RH  
DRAWN JG  
CHECKED CL

STATE OF ALASKA  
DEPARTMENT OF TRANSPORTATION AND PUBLIC FACILITIES  
NORTHERN REGION-AVIATION

APPROVED: *Albert M.L. Beck* DATE 7/14/2020  
ALBERT M.L. BECK, P.E. PROJECT DELIVERY LEAD

BY	DATE	NO.	REVISIONS	FAA

BY	DATE	NO.	REVISIONS	FAA

EDWARD G. PITKA, SR AIRPORT  
GALENA, AK  
AIRPORT DATA SHEET (1 OF 2)

SHEET  
2 OF  
12

TAXIWAY AND CENTERLINE SEPARATION		
ITEM	EXISTING	ULTIMATE
R/W 8-26 CENTERLINE TO R/W 6-24 CENTERLINE	213'	SAME
R/W 8-26 CENTERLINE PARALLEL TAXIWAY CENTERLINE	550'	SAME
R/W 6-24 CENTERLINE PARALLEL TAXIWAY CENTERLINE	343'	SAME

DECLARED DISTANCES								
RUNWAY	TORA		TODA		ASDA		LDA	
	EXISTING	ULTIMATE	EXISTING	ULTIMATE	EXISTING	ULTIMATE	EXISTING	ULTIMATE
R/W 8	6000'	SAME	6000	SAME	6000'	SAME	5600'	SAME
R/W 26	6000'	SAME	6000	SAME	6000'	SAME	5200'	SAME

PACS & SACS						
DESIGNATION	LATITUDE	LONGITUDE	NORTHING	EASTING	ELEVATION	DESCRIPTION
GAL A	64°44'15.92" N	156°56'04.53" W	3925492.15'	1806907.49'	146.3'	PACS
GAL B	64°44'16.53" N	156°54'52.06" W	3925607.78'	1810051.97'	148.2'	SACS
GAL C	64°44'04.97" N	156°57'08.11" W	3924334.55'	1804166.29'	144.2'	SACS

MODIFICATION TO STANDARD					
DESCRIPTION	STANDARD	EXISTING	ULTIMATE	AIRSPACE NO.	APPROVAL DATE
NONE REQUIRED					

DESIGN RH  
 DRAWN JG  
 CHECKED CL

STATE OF ALASKA  
 DEPARTMENT OF TRANSPORTATION AND PUBLIC FACILITIES  
 NORTHERN REGION-AVIATION

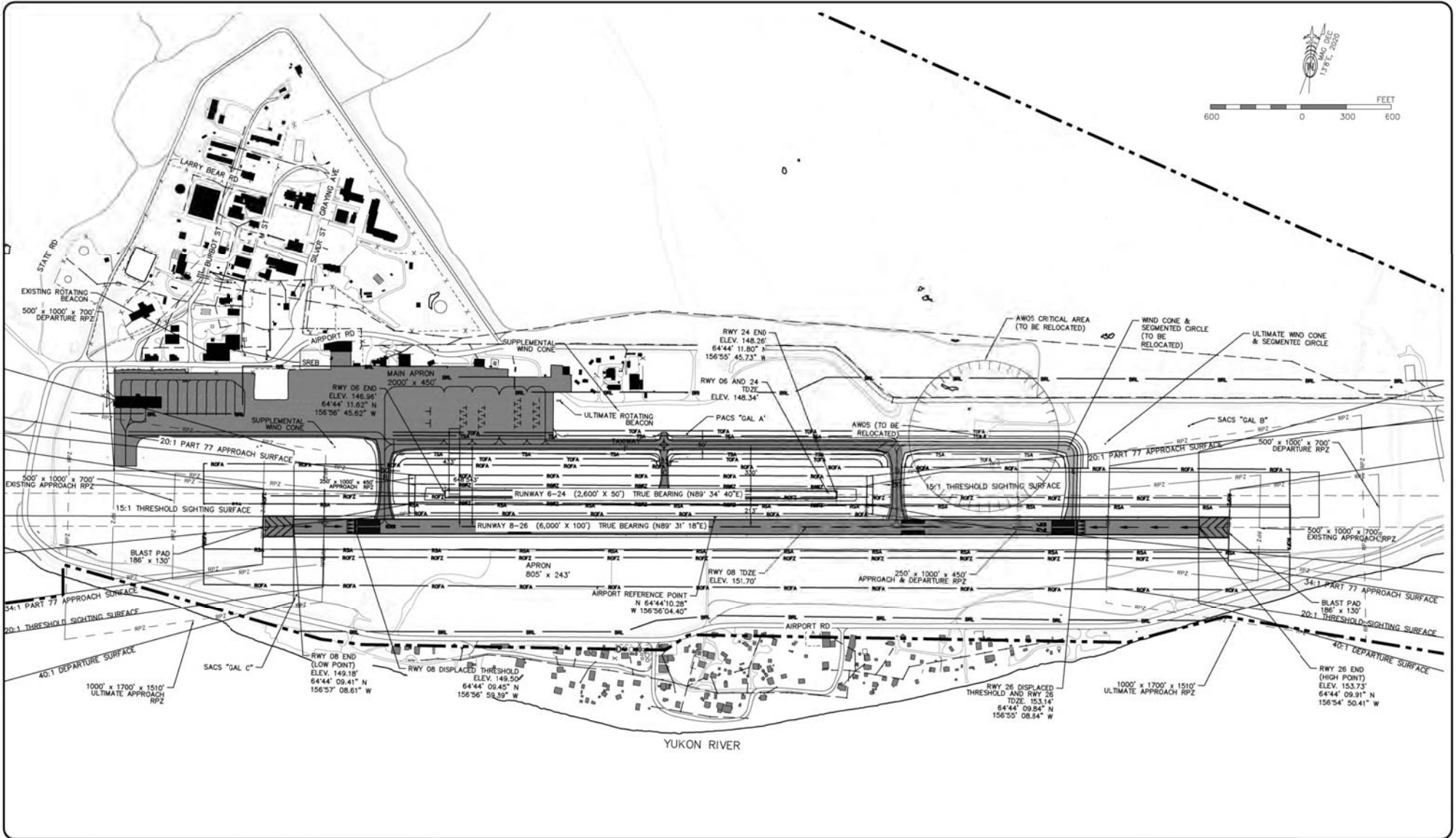
APPROVED: Albert M.L. Beck DATE 7/14/2020  
 ALBERT M.L. BECK, P.E. PROJECT DELIVERY LEAD

BY	DATE	NO.	REVISIONS	FAA

BY	DATE	NO.	REVISIONS	FAA

EDWARD G. PITKA, SR AIRPORT  
 GALENA, AK  
 AIRPORT DATA SHEET (2 OF 2)

SHEET  
3 OF  
 12



DESIGN RH  
 DRAWN JG  
 CHECKED CL

STATE OF ALASKA  
 DEPARTMENT OF TRANSPORTATION AND PUBLIC FACILITIES  
 NORTHERN REGION-AVIATION

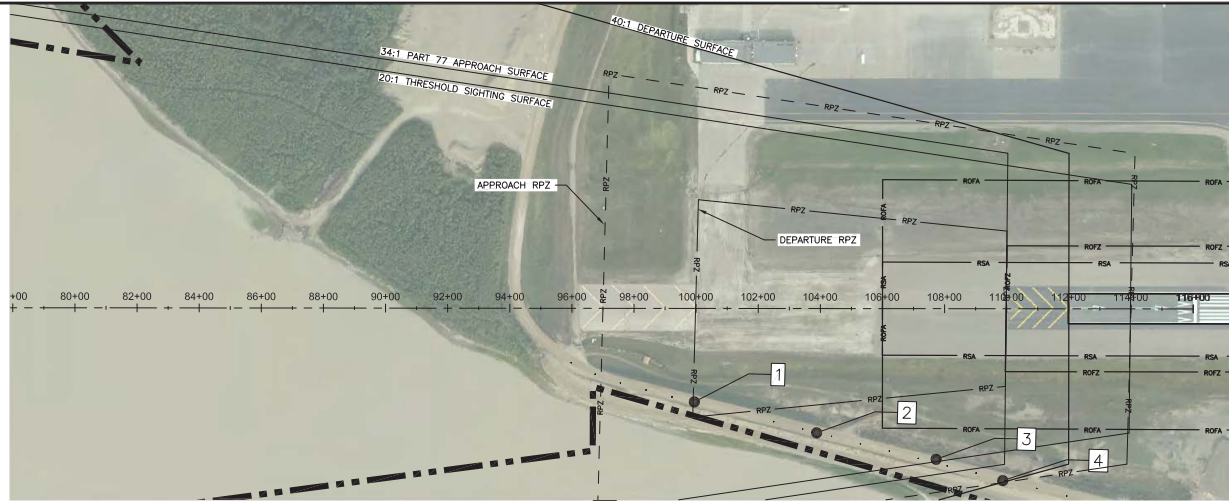
APPROVED: *Albert M.L. Beck*  
 ALBERT M.L. BECK, P.E. DATE 9/28/2020 PROJECT DELIVERY LEAD

BY	DATE	NO.	REVISIONS	FAA

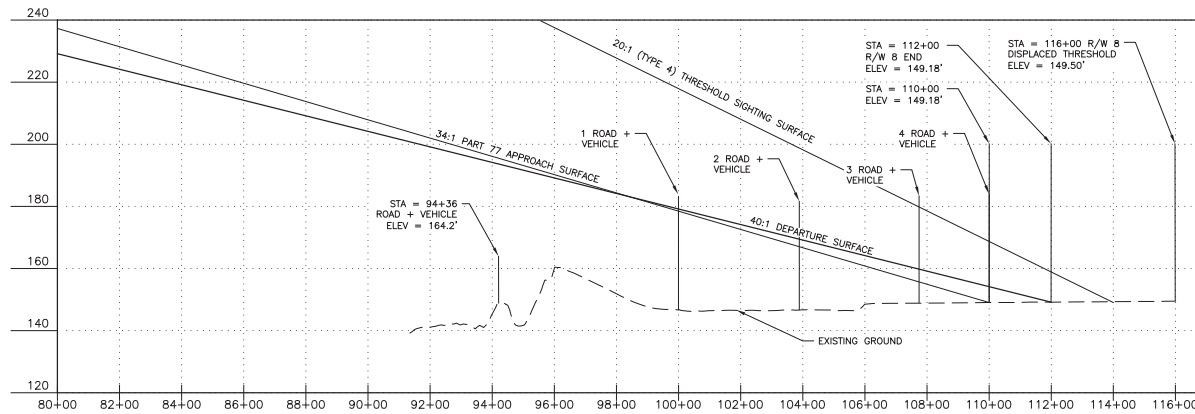
BY	DATE	NO.	REVISIONS	FAA

EDWARD G. PITKA, SR AIRPORT  
 GALENA, ALASKA  
 EXISTING/ULTIMATE AIRPORT LAYOUT PLAN

SHEET  
 4 OF  
 12



RUNWAY 8 INNER APPROACH PLAN



RUNWAY 8 INNER APPROACH PROFILE

DESIGN RH  
 DRAWN JG  
 CHECKED CL

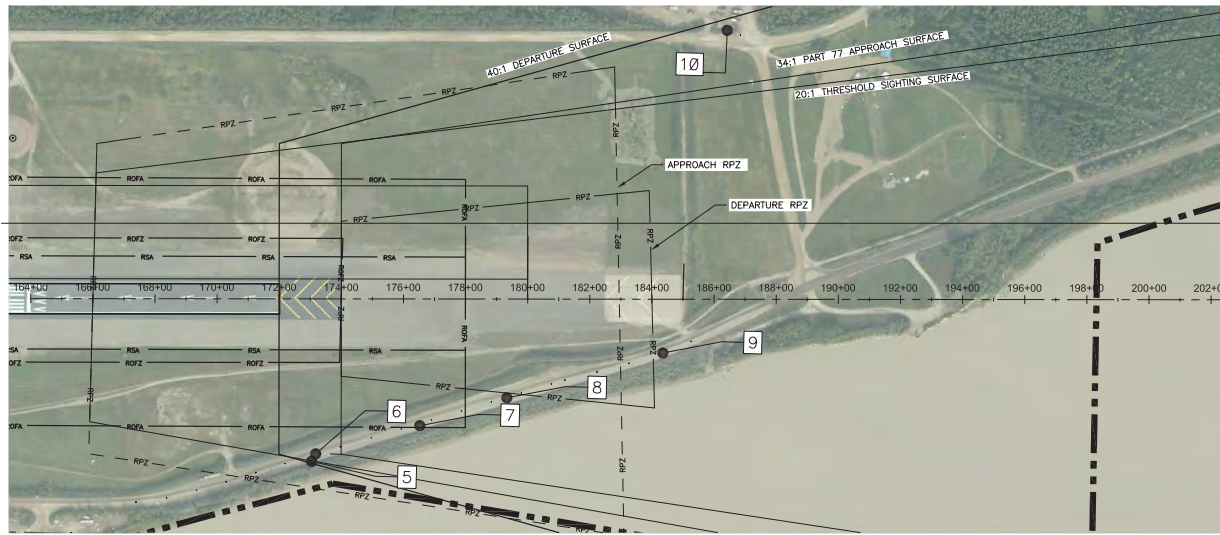
STATE OF ALASKA  
 DEPARTMENT OF TRANSPORTATION AND PUBLIC FACILITIES  
 NORTHERN REGION-AVIATION  
 APPROVED: *Albert M.L. Beck*  
 ALBERT M.L. BECK, P.E. DATE 9/28/2020 PROJECT DELIVERY LEAD

BY	DATE	NO.	REVISIONS	FAA

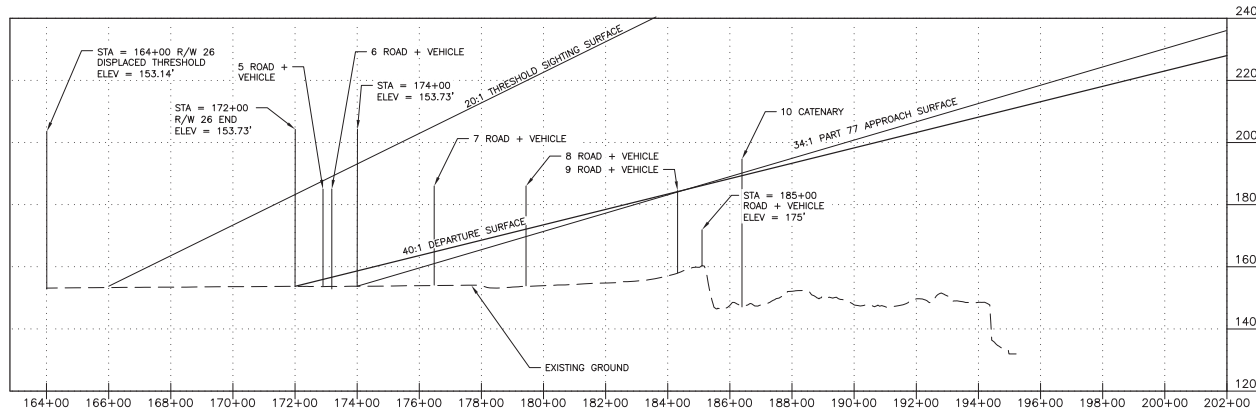
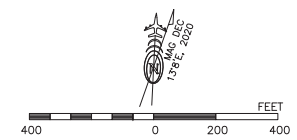
BY	DATE	NO.	REVISIONS	FAA

EDWARD G. PITKA, SR AIRPORT  
 GALENA, ALASKA  
 INNER APPROACH SURFACE RUNWAY 8

SHEET  
 5 OF  
 12



RUNWAY 26 INNER APPROACH PLAN



RUNWAY 26 INNER APPROACH PROFILE

DESIGN RH  
 DRAWN JG  
 CHECKED CL

STATE OF ALASKA  
 DEPARTMENT OF TRANSPORTATION AND PUBLIC FACILITIES  
 NORTHERN REGION-AVIATION  
 APPROVED: *Albert M.L. Beck* DATE 9/28/2020  
 ALBERT M.L. BECK, P.E. PROJECT DELIVERY LEAD

BY	DATE	NO.	REVISIONS	FAA

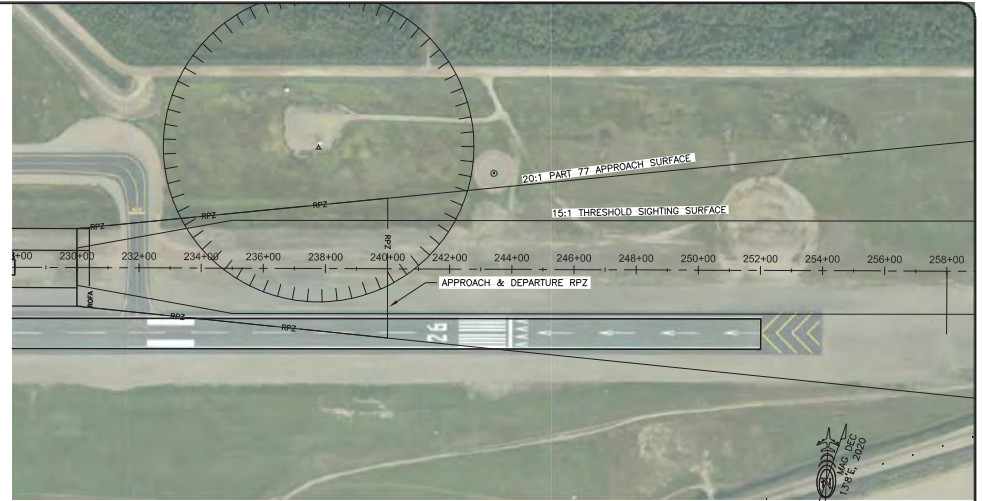
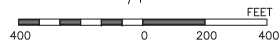
BY	DATE	NO.	REVISIONS	FAA

EDWARD G. PITKA, SR AIRPORT AIRPORT  
 GALENA, ALASKA  
 INNER APPROACH SURFACE RUNWAY 26

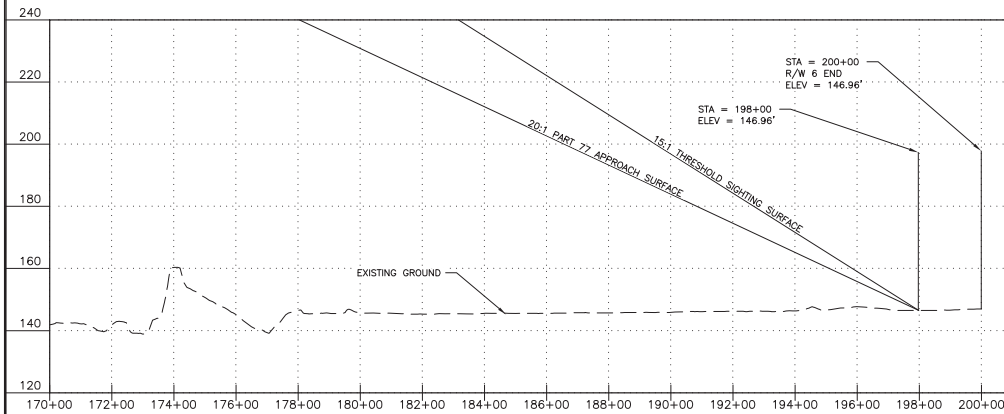
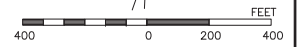
SHEET  
 6 OF  
 12



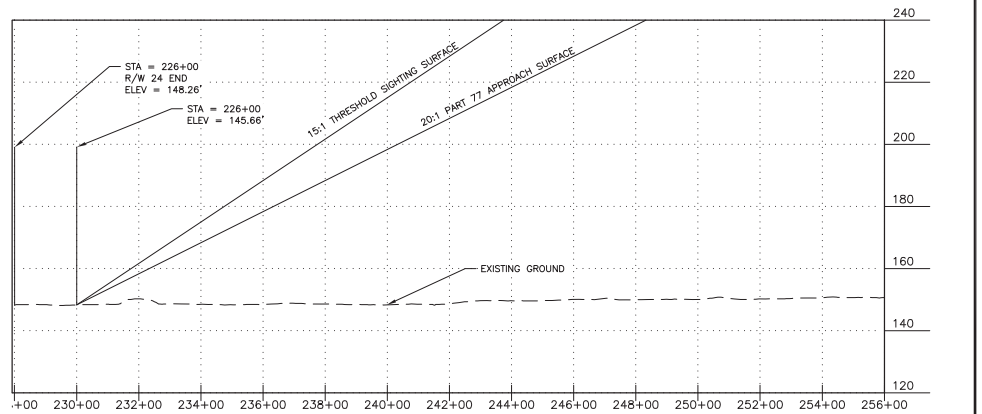
RUNWAY 6 INNER APPROACH PLAN



RUNWAY 24 INNER APPROACH PLAN



RUNWAY 6 INNER APPROACH PROFILE



RUNWAY 24 INNER APPROACH PROFILE

DESIGN RH  
DRAWN JG  
CHECKED CL

STATE OF ALASKA  
DEPARTMENT OF TRANSPORTATION AND PUBLIC FACILITIES  
NORTHERN REGION-AVIATION

APPROVED: *Albert M.L. Beck*  
ALBERT M.L. BECK, P.E. DATE 9/28/2020  
PROJECT DELIVERY LEAD

BY	DATE	NO.	REVISIONS	FAA

BY	DATE	NO.	REVISIONS	FAA

EDWARD G. PITKA, SR AIRPORT AIRPORT  
GALENA, ALASKA  
EXISTING INNER APPROACH SURFACE RUNWAY 6-24

SHEET  
7 OF  
12

SURFACE OBSTRUCTION TABLE								
POINT NUMBER	DESCRIPTION	STATION	OFFSET	ELEVATION(FT)	SURFACE ELEVATION(FT)	SURFACE PENETRATED	SURFACE PENETRATION(FT)	DISPOSITION
1	ROAD + 15' VEHICLE	100+00.00	351.43	182.98	178.83	DEPARTURE	4.15	TO REMAIN
2	ROAD + 15' VEHICLE	103+88.76	440.08	183.28	168.98	DEPARTURE	14.30	TO REMAIN
3	ROAD + 15' VEHICLE	107+74.54	529.39	183.99	159.34	DEPARTURE	24.65	TO REMAIN
4	ROAD + 15' VEHICLE	109+88.60	581.62	184.38	153.98	DEPARTURE	30.40	TO REMAIN
5	ROAD + 15' VEHICLE	172+89.93	512.83	184.84	156.97	DEPARTURE	27.87	TO REMAIN
6	ROAD + 15' VEHICLE	173+18.10	536.29	184.83	157.65	DEPARTURE	27.18	TO REMAIN
7	ROAD + 15' VEHICLE	176+47.75	446.47	186.09	172.93	PART 77 APPROACH SURFACE	1.37	TO REMAIN
8	ROAD + 15' VEHICLE	179+29.07	372.31	186.30	172.93	DEPARTURE	13.37	TO REMAIN
9	ROAD + 15' VEHICLE	184+31.40	253.86	185.85	185.48	DEPARTURE	0.37	TO REMAIN
10	CATENARY	186+39.03	-898.04	194.67	190.68	DEPARTURE	3.99	TO REMAIN

**NOTE:**

1. OBSTRUCTION SURVEY SOURCE: FAA AOC, STANTEC, 2019.

DESIGN RH

DRAWN JG

CHECKED CL

STATE OF ALASKA  
DEPARTMENT OF TRANSPORTATION AND PUBLIC FACILITIES  
NORTHERN REGION-AVIATION

APPROVED: *Albert M.L. Beck* DATE 7/14/2020  
ALBERT M.L. BECK, P.E. PROJECT DELIVERY LEAD

BY	DATE	NO.	REVISIONS	FAA

BY	DATE	NO.	REVISIONS	FAA

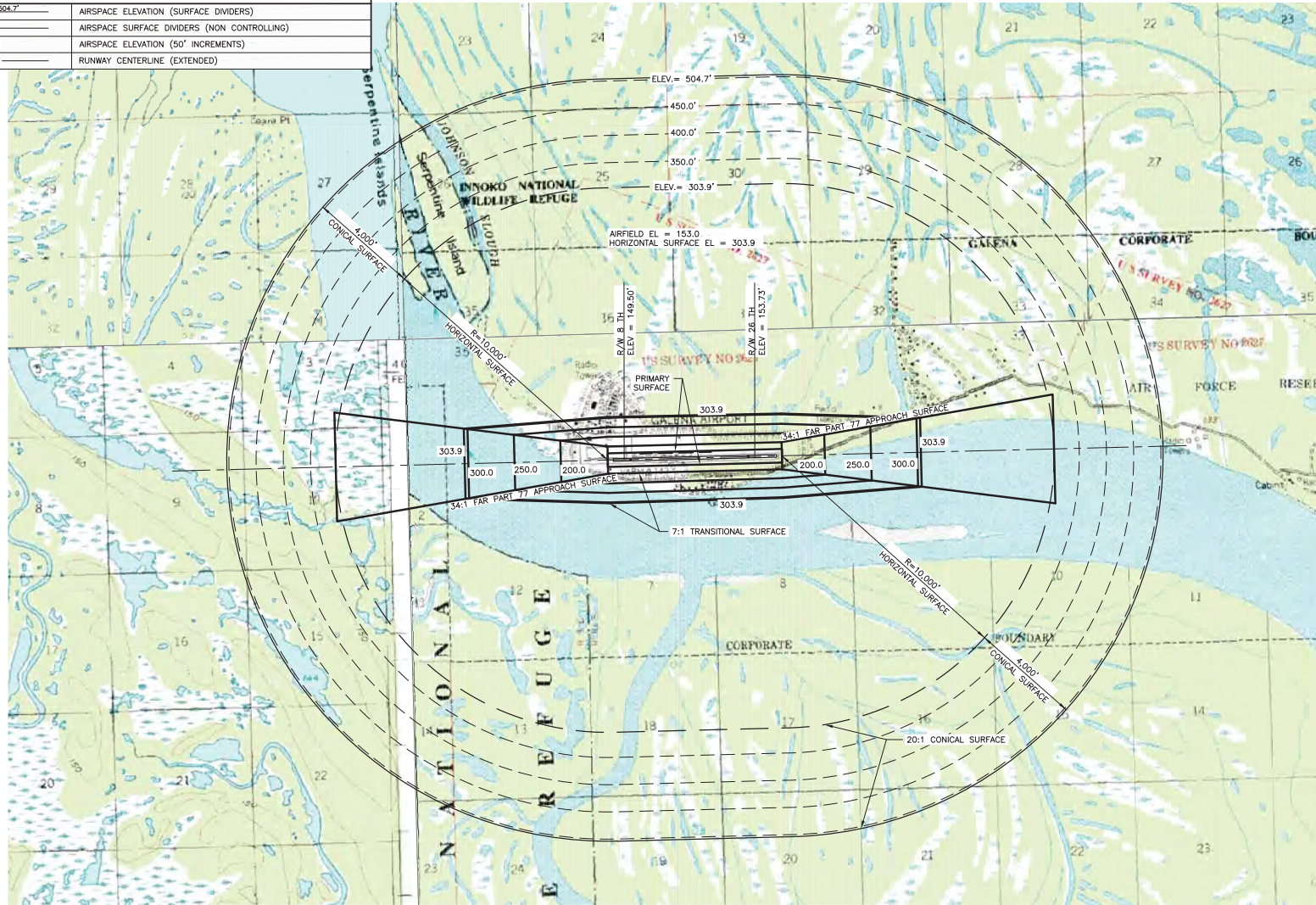
EDWARD G. PITKA, SR AIRPORT  
GALENA, AK  
SURFACE OBSTRUCTIONS TABLE

SHEET  
8 OF  
12

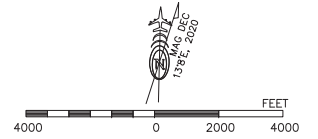


**LEGEND**

— ELEV = 504.7' —	AIRSPACE ELEVATION (SURFACE DIVIDERS)
— — — — —	AIRSPACE SURFACE DIVIDERS (NON CONTROLLING)
— 304.7' —	AIRSPACE ELEVATION (50' INCREMENTS)
— — — — —	RUNWAY CENTERLINE (EXTENDED)



**AIRSPACE PLAN**



**NOTES:**

1. SEE SHEETS 5 & 6 FOR INNER APPROACH OBSTRUCTIONS POINTS.
2. SEE SHEET 8 FOR SURFACE OBSTRUCTION DATA.

**VICINITY MAP**

T9S, R10E, SEC. 5 & 6; T9S, R9E, SEC. 1; T8S, R9E, SEC. 35 & 36; & T8S, R10E, SEC. 31 KATEEL RIVER MERIDIAN U.S.G.S. NULATO C-2, C-3, D-2, & D-3, ALASKA

DESIGN RH

DRAWN JG

CHECKED CL

STATE OF ALASKA  
DEPARTMENT OF TRANSPORTATION AND PUBLIC FACILITIES  
NORTHERN REGION-AVIATION

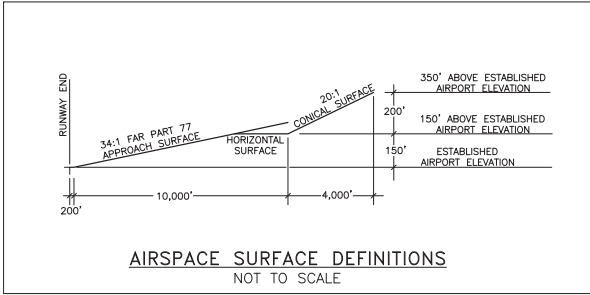
APPROVED: *Albert M.L. Beck* DATE 7/14/2020  
ALBERT M.L. BECK, P.E. PROJECT DELIVERY LEAD

BY	DATE	NO.	REVISIONS	FAA

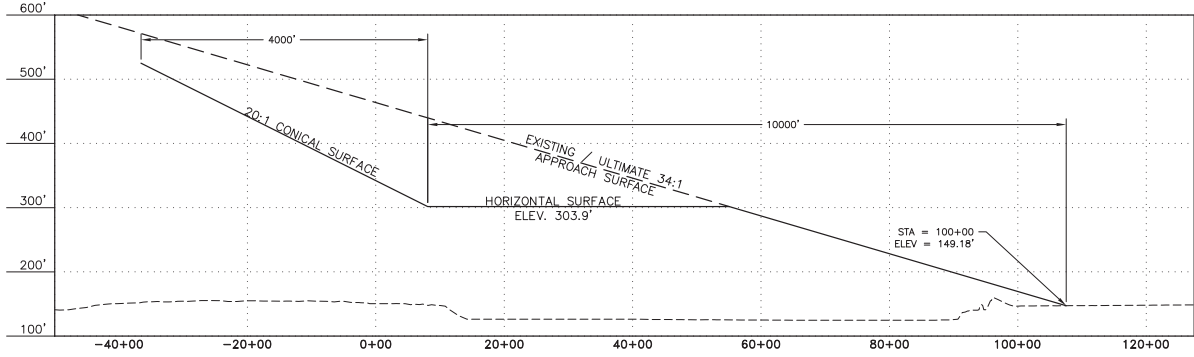
BY	DATE	NO.	REVISIONS	FAA

EDWARD G. PITKA, SR AIRPORT  
GALENA, AK  
AIRPORT AIRSPACE (FAR PART 77) PLAN

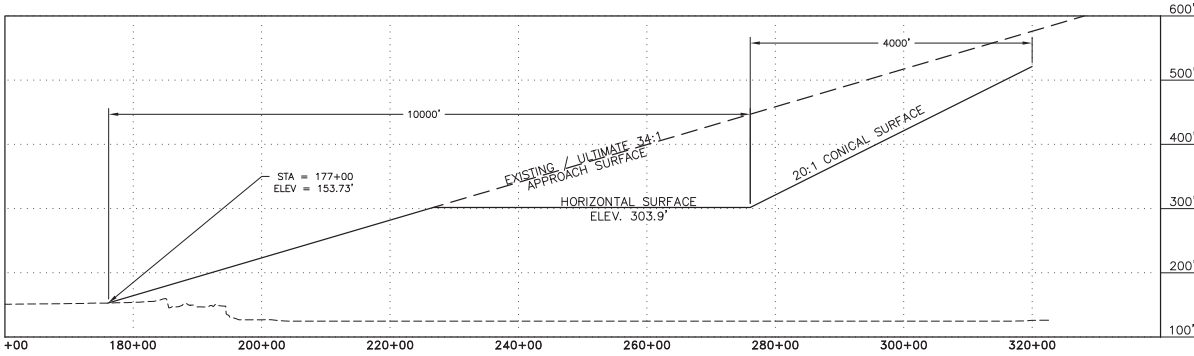
SHEET  
9 OF  
12



**EXISTING/ULTIMATE R/W 8 AIRSPACE PROFILE**  
 SCALES: 1" = 2000' (HOR.)  
 1" = 100' (VERT.)



**EXISTING/ULTIMATE R/W 26 AIRSPACE PROFILE**  
 SCALES: 1" = 2000' (HOR.)  
 1" = 100' (VERT.)



DESIGN RH  
 DRAWN JG  
 CHECKED CL

STATE OF ALASKA  
 DEPARTMENT OF TRANSPORTATION AND PUBLIC FACILITIES  
 NORTHERN REGION-AVIATION

APPROVED: *Albert M.L. Beck* DATE 7/14/2020  
 ALBERT M.L. BECK, P.E. PROJECT DELIVERY LEAD

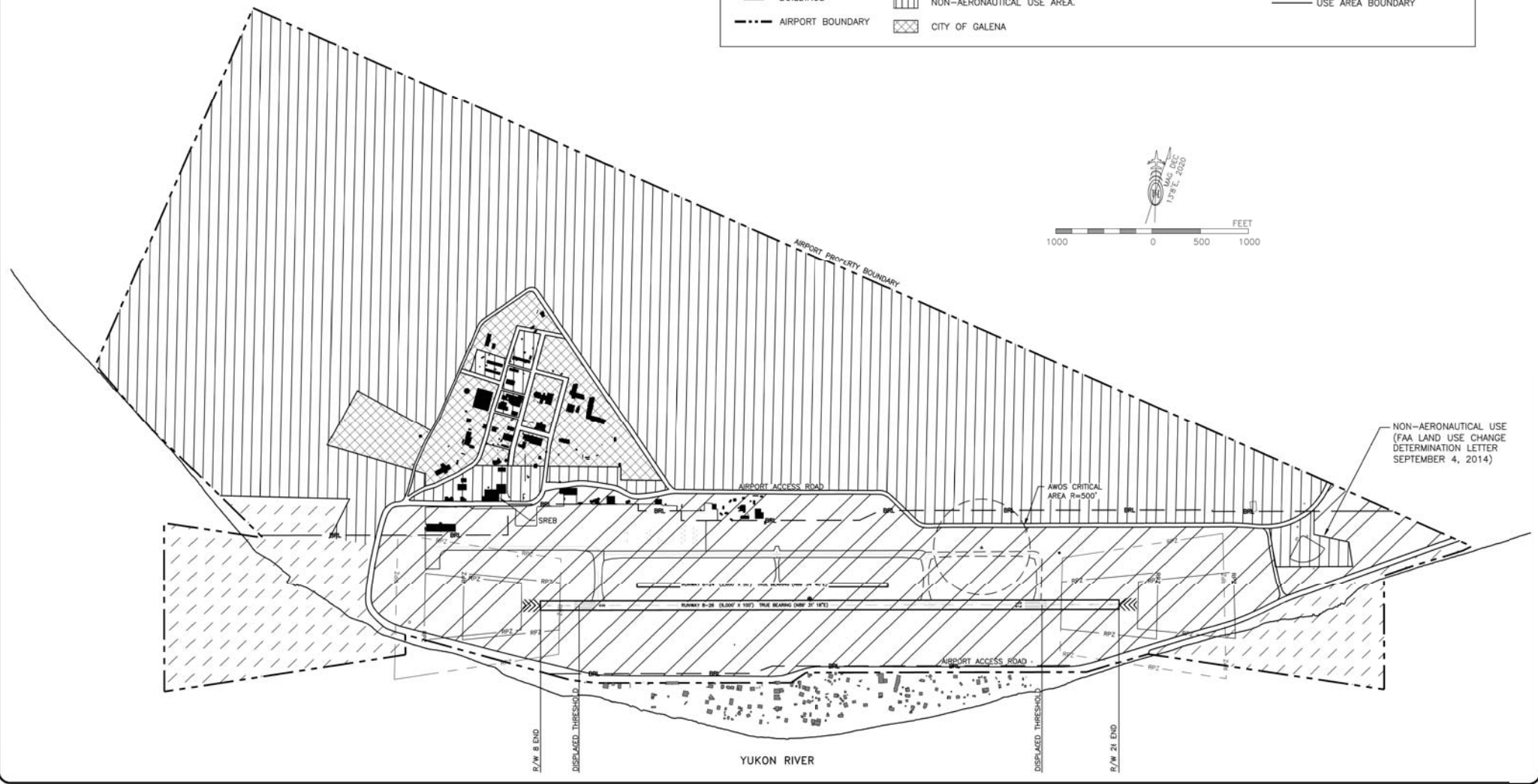
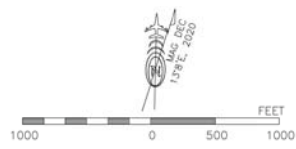
BY	DATE	NO.	REVISIONS	FAA

BY	DATE	NO.	REVISIONS	FAA

EDWARD G. PITKA, SR AIRPORT  
 GALENA, AK  
 AIRPORT AIRSPACE (FAR PART 77) PROFILE

**LEGEND**

ROADS	AVIATION USE AREA	AVIATION & HAZARD EASEMENT
BUILDINGS	NON-AERONAUTICAL USE AREA	USE AREA BOUNDARY
AIRPORT BOUNDARY	CITY OF GALENA	



NON-AERONAUTICAL USE  
(FAA LAND USE CHANGE  
DETERMINATION LETTER  
SEPTEMBER 4, 2014)

DESIGN JG  
DRAWN RH  
CHECKED CL

STATE OF ALASKA  
DEPARTMENT OF TRANSPORTATION AND PUBLIC FACILITIES  
NORTHERN REGION-AVIATION

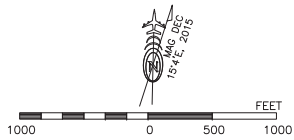
APPROVED: *Albert M.L. Beck*  
ALBERT M.L. BECK, P.E. DATE 7/14/2020  
PROJECT DELIVERY LEAD

BY	DATE	NO.	REVISIONS	FAA

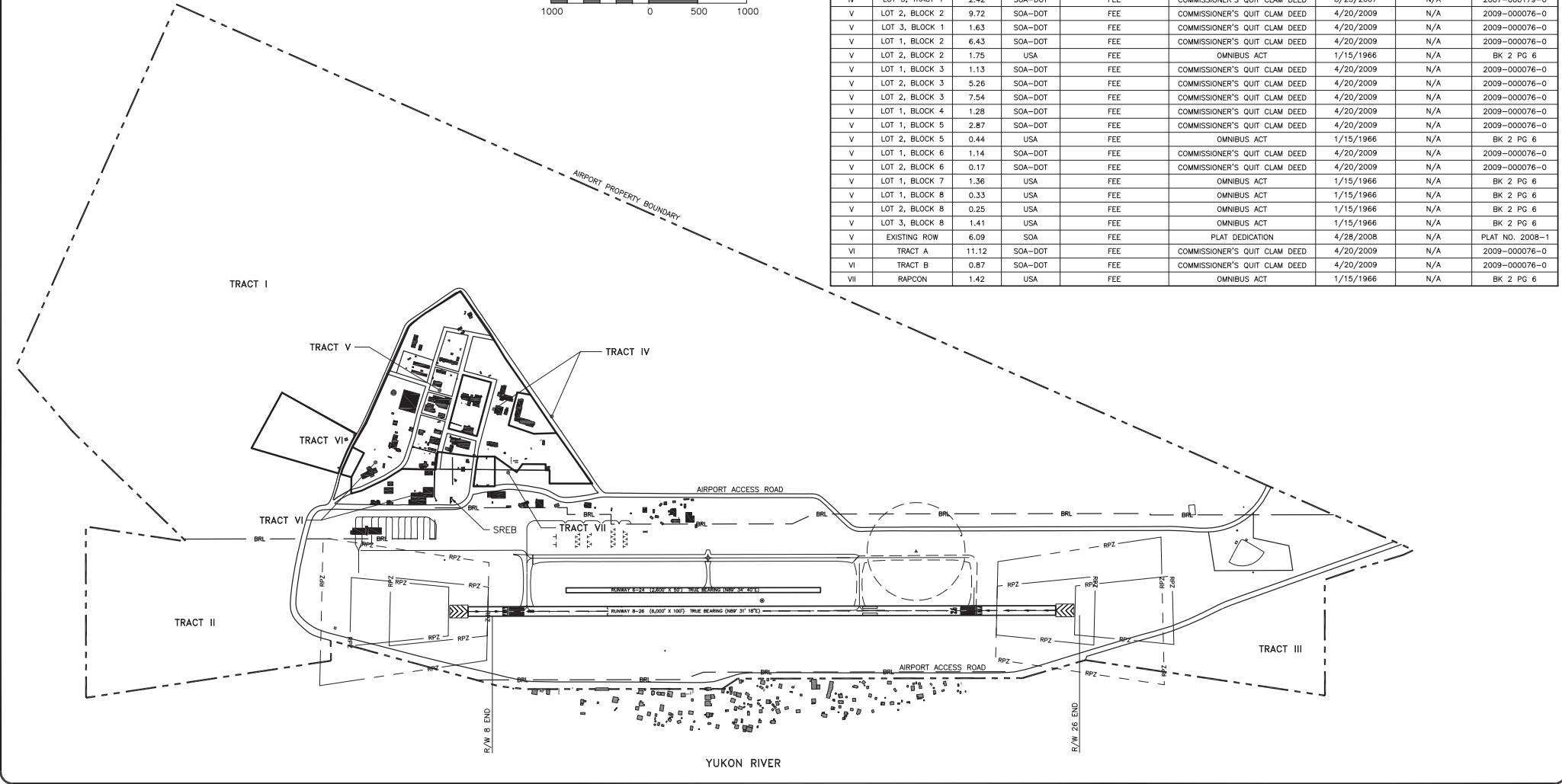
BY	DATE	NO.	REVISIONS	FAA

EDWARD G. PITKA, SR AIRPORT  
GALENA, AK  
AIRPORT LAND USE

SHEET  
11 OF  
12



PROPERTY STATUS								
TRACT	PARCEL	AREA ACRES	GRANTOR	INTEREST	CONVEYANCE DOCUMENT	DATE ACQUIRED	FAA GRANT #	RD INFO.
I		1137.06	USA	FEE	OMNIBUS ACT	1/15/1966	N/A	BK 2 PG 6
II		20.29	SOA-DNR	MANAGEMENT AUTHORITY	ILMA--AMENDED	12/7/2018	3-02-010204	2018-000174-0
III		15.98	SOA-DNR	MANAGEMENT AUTHORITY	ILMA--AMENDED	12/7/2018	3-02-010204	2018-000174-0
IV	LOT 1, TRACT 1	3.15	SOA-DOT	FEE	COMMISSIONER'S QUIT CLAM DEED	8/23/2007	N/A	2007-000179-0
IV	LOT 2, TRACT 1	0.77	SOA-DOT	FEE	COMMISSIONER'S QUIT CLAM DEED	4/20/2009	N/A	2009-000076-0
IV	LOT 3, TRACT 1	2.42	SOA-DOT	FEE	COMMISSIONER'S QUIT CLAM DEED	8/23/2007	N/A	2007-000179-0
V	LOT 2, BLOCK 2	9.72	SOA-DOT	FEE	COMMISSIONER'S QUIT CLAM DEED	4/20/2009	N/A	2009-000076-0
V	LOT 3, BLOCK 1	1.63	SOA-DOT	FEE	COMMISSIONER'S QUIT CLAM DEED	4/20/2009	N/A	2009-000076-0
V	LOT 1, BLOCK 2	6.43	SOA-DOT	FEE	COMMISSIONER'S QUIT CLAM DEED	4/20/2009	N/A	2009-000076-0
V	LOT 2, BLOCK 2	1.75	USA	FEE	OMNIBUS ACT	1/15/1966	N/A	BK 2 PG 6
V	LOT 1, BLOCK 3	1.13	SOA-DOT	FEE	COMMISSIONER'S QUIT CLAM DEED	4/20/2009	N/A	2009-000076-0
V	LOT 2, BLOCK 3	5.26	SOA-DOT	FEE	COMMISSIONER'S QUIT CLAM DEED	4/20/2009	N/A	2009-000076-0
V	LOT 2, BLOCK 3	7.54	SOA-DOT	FEE	COMMISSIONER'S QUIT CLAM DEED	4/20/2009	N/A	2009-000076-0
V	LOT 1, BLOCK 4	1.28	SOA-DOT	FEE	COMMISSIONER'S QUIT CLAM DEED	4/20/2009	N/A	2009-000076-0
V	LOT 1, BLOCK 5	2.87	SOA-DOT	FEE	COMMISSIONER'S QUIT CLAM DEED	4/20/2009	N/A	2009-000076-0
V	LOT 2, BLOCK 5	0.44	USA	FEE	OMNIBUS ACT	1/15/1966	N/A	BK 2 PG 6
V	LOT 1, BLOCK 6	1.14	SOA-DOT	FEE	COMMISSIONER'S QUIT CLAM DEED	4/20/2009	N/A	2009-000076-0
V	LOT 2, BLOCK 6	0.17	SOA-DOT	FEE	COMMISSIONER'S QUIT CLAM DEED	4/20/2009	N/A	2009-000076-0
V	LOT 1, BLOCK 7	1.36	USA	FEE	OMNIBUS ACT	1/15/1966	N/A	BK 2 PG 6
V	LOT 1, BLOCK 8	0.33	USA	FEE	OMNIBUS ACT	1/15/1966	N/A	BK 2 PG 6
V	LOT 2, BLOCK 8	0.25	USA	FEE	OMNIBUS ACT	1/15/1966	N/A	BK 2 PG 6
V	LOT 3, BLOCK 8	1.41	USA	FEE	OMNIBUS ACT	1/15/1966	N/A	BK 2 PG 6
V	EXISTING ROW	6.09	SOA	FEE	PLAT DEDICATION	4/28/2008	N/A	PLAT NO. 2008-1
VI	TRACT A	11.12	SOA-DOT	FEE	COMMISSIONER'S QUIT CLAM DEED	4/20/2009	N/A	2009-000076-0
VI	TRACT B	0.87	SOA-DOT	FEE	COMMISSIONER'S QUIT CLAM DEED	4/20/2009	N/A	2009-000076-0
VII	RAPCON	1.42	USA	FEE	OMNIBUS ACT	1/15/1966	N/A	BK 2 PG 6



DESIGN RH  
 DRAWN JG  
 CHECKED CL

STATE OF ALASKA  
 DEPARTMENT OF TRANSPORTATION AND PUBLIC FACILITIES  
 NORTHERN REGION-AVIATION

APPROVED: *Albert M.L. Beck* DATE 7/14/2020  
 ALBERT M.L. BECK, P.E. PROJECT DELIVERY LEAD

BY	DATE	NO.	REVISIONS	FAA

BY	DATE	NO.	REVISIONS	FAA

EDWARD G. PITKA, SR AIRPORT  
 GALENA, AK  
 AIRPORT PROPERTY PLAN

SHEET  
 12 OF  
 12