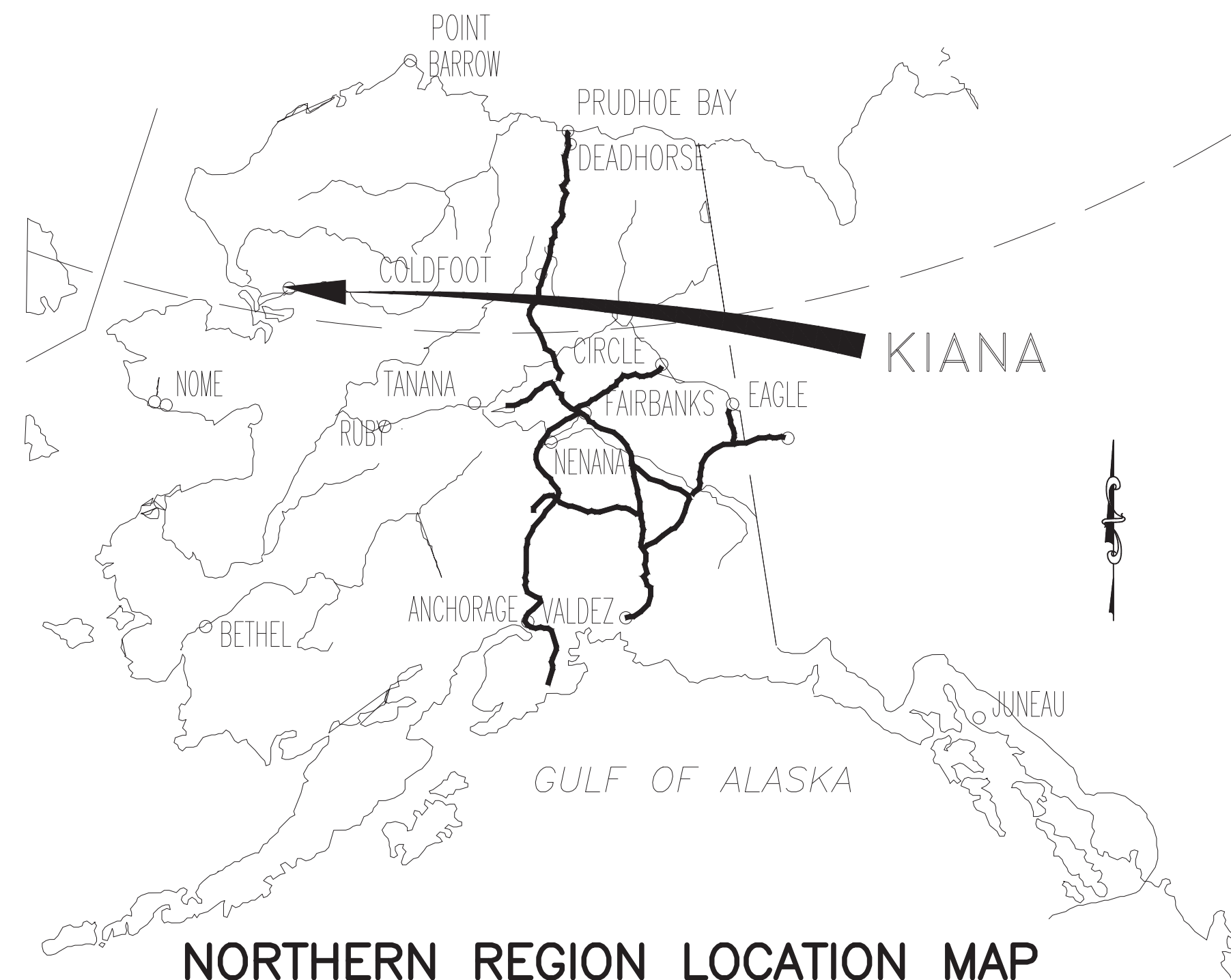
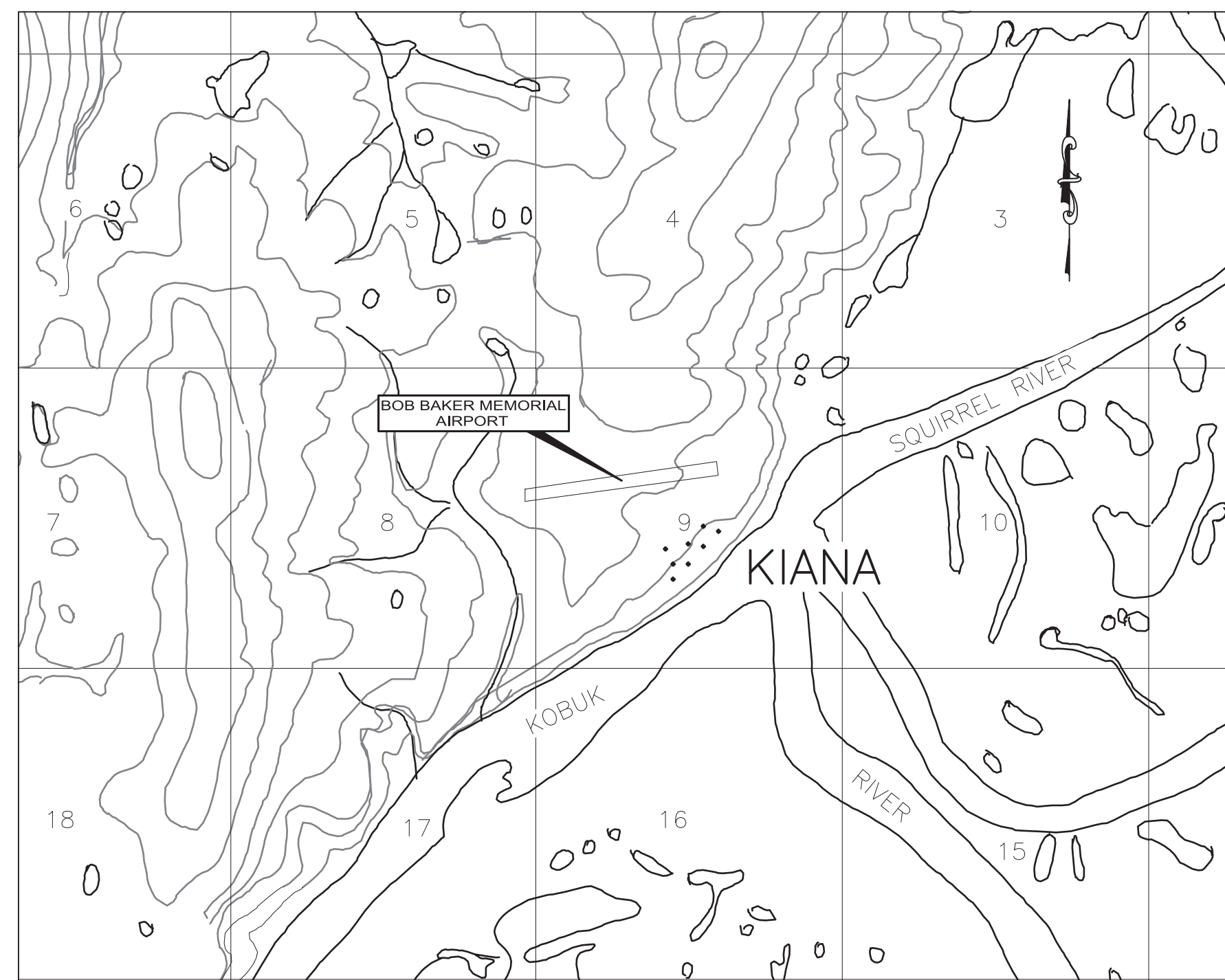


C:\users\jordan.zellhuber\appdata\local\bentley\projectwise\workingdir\mb-us-pw-bentley.com_mb-us-pw-02\jordan.zellhuber@mbakerintl.com\dms99619\IAN_01 COVER_SHEET-Cover



NORTHERN REGION LOCATION MAP
NOT TO SCALE



VICINITY MAP
NOT TO SCALE
PROTRACTED T18N, R8W
KATEEL RIVER MERIDIAN
USGS SELAWIK (D3), ALASKA

BOB BAKER MEMORIAL AIRPORT AIRPORT LAYOUT PLAN KIANA, ALASKA

LEGEND		
ITEM	EXISTING	ULTIMATE
AIRPORT REFERENCE POINT (A.R.P.)	⊙	⊙
ANTENNA	▲	▲
APPROACH SURFACE	— · · · AP —	— · · · AP —
BUILDINGS	■	□
BUILDING RESTRICTION LINE	— BRL —	— BRL —
DEPARTURE SURFACE	— · · · DP —	— · · · DP —
FAA WEATHER STATION	⊠	⊠
FENCE	— x — x — x —	— x — x — x —
PAPI	□ □ □ □	□ □ □ □
PROPERTY LINE	— — — —	— — — —
REIL	⊕	⊕
ROADWAYS	— — — —	— — — —
ROTATING BEACON	⊗	⊗
RUNWAY OBJECT FREE AREA	— OFA —	— OFA —
RUNWAY OBSTACLE FREE ZONE	— OFZ —	— OFZ —
RUNWAY PROTECTION ZONE	— RPZ —	— RPZ —
RUNWAY SAFETY AREA	— RSA —	— RSA —
SEGMENTED CIRCLE WITH WINDCONE	⊙	⊙
EDGE OF RIPRAP	— — — —	— — — —
SURVEY MONUMENT	●	●
THRESHOLD MARKERS/LIGHTS	○ ○ ○ ○	○ ○ ○ ○
THRESHOLD SITING SURFACE	— TSS —	— TSS —
TOPOGRAPHIC CONTOURS	— 100 —	— 100 —
TREELINE	~ ~ ~ ~	~ ~ ~ ~
UTILITY POLE	●	●
WATER BODY	~ ~ ~ ~	~ ~ ~ ~
WIND CONE	⊠	⊠
WIND TURBINE	⊠	⊠

DRAWING INDEX	
SHT #	SHEET TITLE
1	TITLE SHEET
2	AIRPORT DATA SHEET
3	AIRPORT LAYOUT PLAN – EXISTING/ULTIMATE
4	AIRPORT AIRSPACE DRAWING
5	AIRPORT COMPOSITE APPROACH PROFILES
6	INNER PORTION OF THE APPROACH SURFACE PLAN AND PROFILE DRAWING RW 7
7	INNER PORTION OF THE APPROACH SURFACE PLAN AND PROFILE DRAWING RW 25
8	DEPARTURE SURFACES RW END 25
9	DEPARTURE SURFACES RW END 7
10	TERMINAL AREA
11	LAND USE PLAN
12	AIRPORT PROPERTY MAP

DESIGN REH
DRAWN LIC
CHECKED REH

STATE OF ALASKA
DEPARTMENT OF TRANSPORTATION AND PUBLIC FACILITIES
NORTHERN REGION-AVIATION
APPROVED: *Albert M.L. Beck* DATE 7/28/2021
ALBERT M.L. BECK, P.E. DESIGN GROUP CHIEF

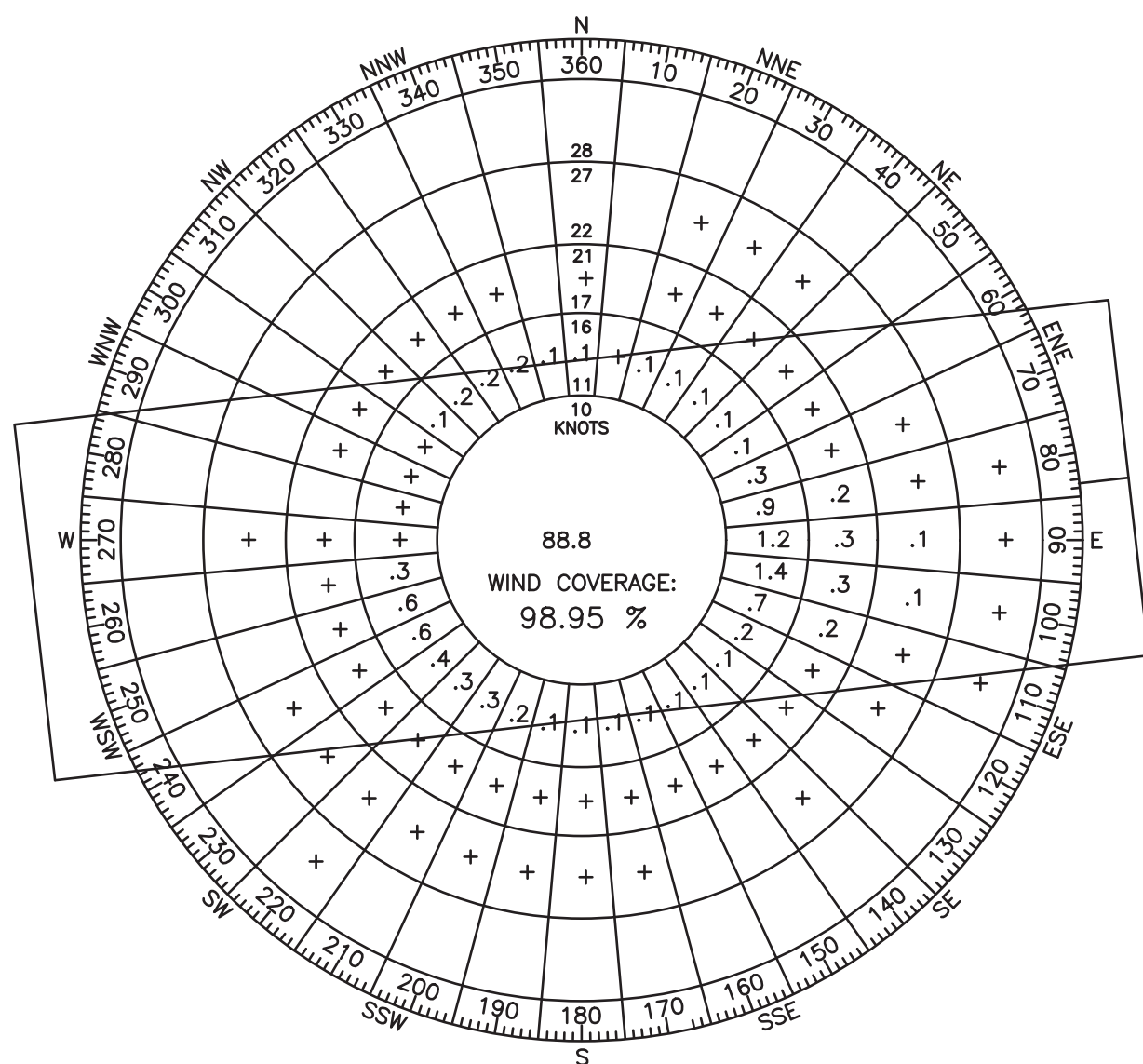
AIRPORT LAYOUT PLAN CONDITIONAL APPROVAL SUBJECT TO
ALP APPROVAL LETTER DATED 04/14/2015
FAA AIRSPACE REVIEW NUMBER: 2015-AAL-9-NRA
AS-BUILT ACCEPTED
DATE _____
FAA, AIRPORTS DIVISION ALASKAN REGION, AAL- _____

MBI	07/14/21	AS-BUILT
BY	DATE	REVISIONS

BOB BAKER MEM. AIRPORT
KIANA, ALASKA
COVER SHEET

SHEET
1 OF
12

C:\users\jordan.zellhuber\appdata\local\bentley\projectwise\workingdir\mb-us-pw-bentley.com-us-pw-02\jordan.zellhuber@mbakerintl.com\dms39619\IAN_02-DATA_SHEET_120721_1-Data



WIND ROSE DEPICTED RELATIVE TO TRUE NORTH (NAD 83)

DECLARED DISTANCES				
DISTANCES	EXISTING		ULTIMATE	
	7	25	7	25
TORA	4,000'	4,000'	4,000'	4,000'
TODA	4,000'	4,000'	4,000'	4,000'
ASDA	4,000'	4,000'	4,000'	4,000'
LDA	4,000'	4,000'	4,000'	4,000'
ULTIMATE LENGTH	4,000'		4,000'	

ULTIMATE WIND ROSE
12 MPH/13.0 KNOTS
WIND DATA
PERCENT WIND COVERAGE
RUNWAY 7-25: 98.95%
WIND DATA PERIOD: 2008-2013
WIND DATA SOURCE: WRCC

NOTES:

- 1.NO OFZ OBJECT PENETRATIONS.
- 2.NO THRESHOLD SITING SURFACE OBJECT PENETRATIONS.
- 3.COORDINATE SYSTEM IS U.S. FEET NAD83(CORS96) (EPOCH 2003.00) ALASKA STATE PLANE ZONE 7 U.S. SURVEY FEET. THE PRIMARY CONTROL FOR THIS SURVEY IS "IAN D 2020".
- 4.THE VERTICAL DATUM IS GPS DERIVED ORTHOMETRIC HEIGHT IS U.S. SURVEY FEET, NAVD88, GEOID 12B.
- 5.2020 JAN 01, AIRPORT MAGNETIC DECLINATION IS: 11°24'E, IGRF 2020, CHANGING BY 0'23' W PER YEAR.
- 6.www.ngdc.noaa.gov/geomag-web/#declination

THIS ALP DRAWING SET IS UPDATED BASED ON A COMPILATION OF THE PREVIOUSLY APPROVED ALP SET (DATED 2010), AND AS BUILT PLANS (DATED 2019) OF AIRPORT IMPROVEMENTS, AS WELL AS A RECENT SURVEY COMPLETED BY LOUNSBURY ASSOCIATES, INC. IN SEPTEMBER 2020 AND A CONTROL AND TOPOGRAPHIC SURVEY PERFORMED BY USKH IN 11/10/2010, THIS ALP WAS UPDATED IN ACCORDANCE WITH FAA AC 150/5300-13A AND 150/5070-6B IN JUNE 2021.

AIRPORT DATA		
ITEM	EXISTING	ULTIMATE
ICAO IDENTIFIER	PAIK	PAIK
NATIONAL AIRPORT IDENTIFIER	IAN	SAME
FAA SITE NUMBER	50412.9	SAME
AIRPORT ELEVATION NAVD88	178.68'	SAME
RAMP LIGHTING	NONE	SAME
AIRPORT REFERENCE CODE	B-II	SAME
MEAN MAX. TEMPERATURE, HOTTEST MONTH	64 F JULY	SAME
AIRPORT AND TERMINAL NAVIGATION AIDS	(RNAV) GPS (25 ONLY), PAPI, SEGMENTED CIRCLE W/WINDCONE	
TAXIWAY LIGHTING/MARKING	MITL	SAME
AIRPORT REFERENCE POINT LAT.	N66°58'34.24"	SAME
LONG.	W160°26'18.96"	SAME
NPAIS SERVICE LEVEL (C, PS, R, GA)	CS	CS
AIRPORT FACILITIES	GPS, SEGMENTED CIRCLE W/LIGHTED WINDCONE, AIRPORT BEACON, REILS (25 END ONLY), MITL, THRESHOLD LIGHTS	
MAGNETIC DECLINATION, YEAR, RATE OF CHANGE	11°24'E, 2020, 0'23' W PER YEAR	

PACS & SACS (OR OTHER CONTROL)*							
PID	DESIGNATION	LATITUDE	LONGITUDE	ELLIPSOID HEIGHT	NORTHING	EASTING	ELEVATION
IAN D	PACS	66°58'37.4448" N	160°25'55.3160" W	166.96	4746046.42	1864977.27	155.99
IAN C	SACS	66°58'40.9936" N	160°25'23.1823" W	139.83	4746439.28	1866246.33	128.85
IAN E	SACS	66°58'36.1848" N	160°26'35.3942" W	183.55	4745878.39	1863386.25	172.60

*MEAN OPUS/TEMPORARY CONTROL VALUES ARE GIVEN ON THE PACS AND SACS (NGS APPROVAL OF FINAL COORDINATES IS CURRENTLY PENDING)

RUNWAY 7/25 DATA

ITEM	EXISTING (7/25)	ULTIMATE (7/25)
WINDSPEED		
RUNWAY WIND COVERAGE % (ALL WEATHER)	98.95%	98.95%
RUNWAY TYPE (UTILITY OR OTHER THAN UTILITY)	OTHER THAN UTILITY	OTHER THAN UTILITY
FAR PART 77 APPROACH CATEGORY (V, NPI, P)	B(V)/B(V)	SAME
FAR PART 77 APPROACH SLOPE	20:1/34:1	34:1/34:1
RUNWAY DESIGN CODE (RDC)	B-II	B-II/5000
APPROACH REFERENCE CODE (APRC)	B-II	B-II/5000
DEPARTURE REFERENCE CODE (DPRC)	B-II	B-II/5000
VISIBILITY MINIMUM	>1 MILE	>1 MILE
CRITICAL AIRCRAFT	CESSNA 208/PIPER PA-31	BEECH 1900
APPROACH TSS SLOPE	20:1	20:1
RUNWAY MATERIAL TYPE	GRAVEL	GRAVEL
PAVEMENT STRENGTH SW,DW,STW,DDTW x1000LBS	NOT APPLICABLE	SAME
PCN	NOT APPLICABLE	SAME
AIRCRAFT APPROACH CATEGORY	B	B
AIRPLANE DESIGN GROUP	II	II
TRUE MEAN BEARING	N 89°13'43 E	N 89°13'43 E
RUNWAY END COORDINATES:		
LATITUDE (NAD83)	7 - N 66° 58' 32.4989" 25 - N 66° 58' 35.9754"	7 - N 66° 58' 32.4989" 25 - N 66° 58' 35.9754"
LONGITUDE (NAD83)	7 - W 160° 27' 09.0204" 25 - W 160° 25' 28.8920"	7 - W 160° 27' 09.0204" 25 - W 160° 25' 28.8920"
RUNWAY END ELEVATION (NAD83)	7-178.57' / 25-146.70'	7-178.57' / 25-146.70'
RUNWAY TOUCHDOWN ZONE ELEVATION	7-178.68' / 25-175.03'	7-178.68' / 25-147.0'
EFFECTIVE GRADE	-0.8% / 0.8%	-0.8% / 0.8%
RUNWAY DIMENSIONS	75' X 4,000'	75' X 4,000'
RUNWAY SAFETY AREA (RSA) DIMENSIONS	150' X 4,600'	150' X 4,600'
LENGTH BEYOND R/W END	300' / 300'	300' / 300'
RUNWAY PROTECTION ZONE (RPZ) DIMENSIONS	1,000' X 500' X 700'	1,000' X 500' X 700'
RUNWAY OBJECT FREE AREA (OFA) DIMENSIONS	300' X 4,600'	300' X 4,600'
RUNWAY OBSTACLE FREE ZONE (ROFZ) DIMENSIONS	200' X 4,400'	200' X 4,400'
LENGTH BEYOND R/W END OR STOPWAY	300' / 300'	300' / 300'
RUNWAY OBSTACLE FREE ZONE (OFZ) DIMENSIONS	250' X 4,400'	250' X 4,400'
RUNWAY LIGHTING	MIRL	MIRL
RUNWAY MARKING TYPE	NONE	NONE
RUNWAY VISUAL APPROACH AIDS	7-NONE / 25-PAPI-4, REIL	7-NONE / 25-PAPI-4, REIL

NOTE: ALL LATITUDE/LONGITUDE COORDINATES ARE NAD83 (2011) ALASKA STATE PLANE ZONE 7, U.S. SURVEY FEET.

TAXIWAY DATA

ITEM	EXISTING	ULTIMATE
TAXIWAY DESIGN GROUP	TDG-2	SAME
TAXIWAY SURFACE	GRAVEL	SAME
TAXIWAY DIMENSIONS	35'	SAME
SAFETY AREA (TSA) WIDTH	79'	SAME
TEDGE SAFETY MARGIN (TESM)	7.5'	SAME
OBJECT FREE AREA (TOFA) WIDTH	131'	SAME
LIGHTING	MITL	SAME
MARKING	EDGE	SAME

MODIFICATIONS TO STANDARDS

DESCRIPTION	FAA STANDARDS	EXISTING	ULTIMATE	AIRSPACE #	APPROVAL DATE
NONE					

DESIGN REH
DRAWN LIC
CHECKED REH

STATE OF ALASKA
DEPARTMENT OF TRANSPORTATION AND PUBLIC FACILITIES
NORTHERN REGION-AVIATION

APPROVED: *Albert M.L. Beck* DATE 7/28/2021
ALBERT M.L. BECK, P.E. DESIGN GROUP CHIEF

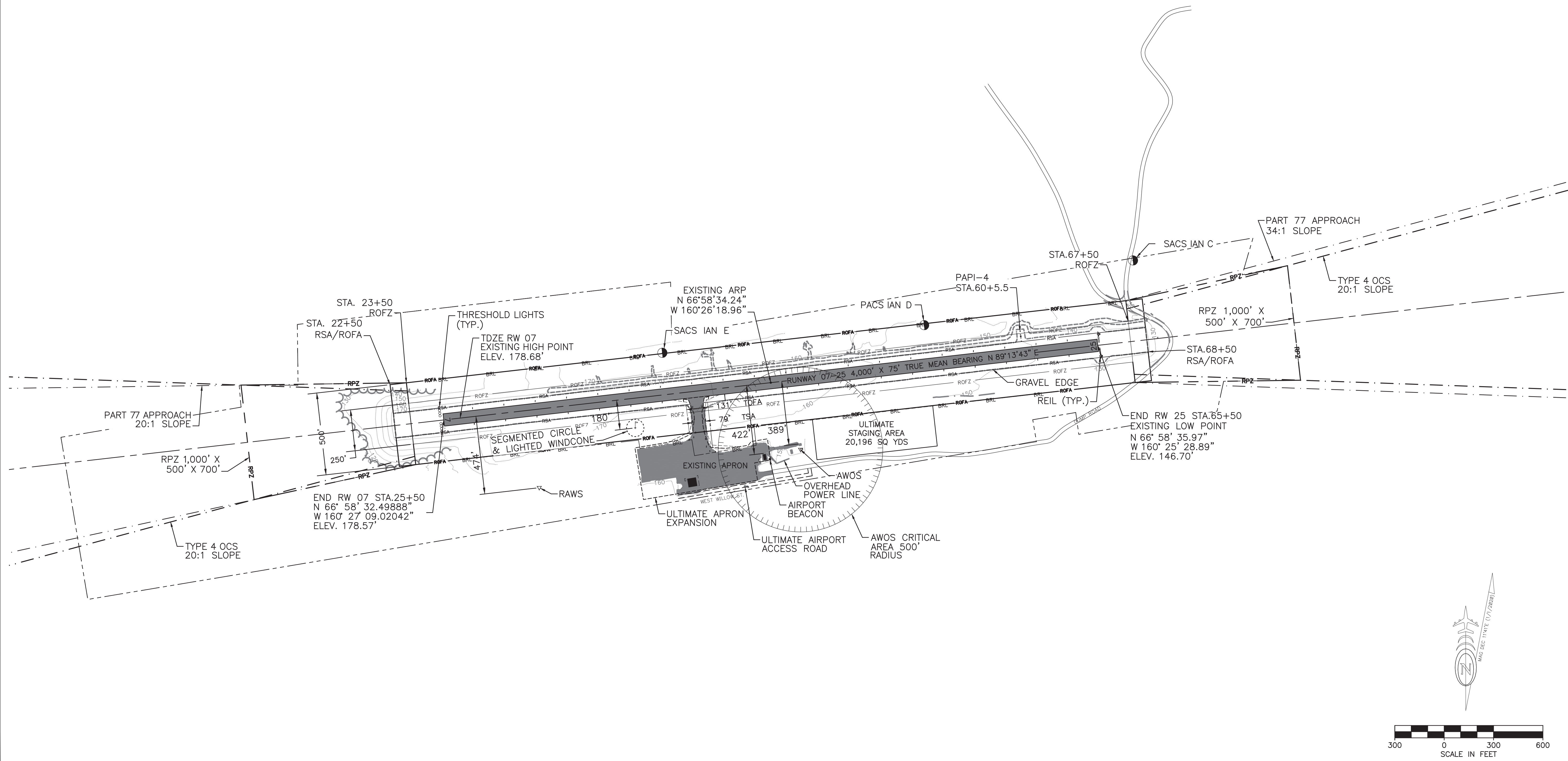
BY	DATE	NO.	REVISIONS	FAA

BY	DATE	NO.	REVISIONS	FAA

BOB BAKER MEM. AIRPORT
KIANA, ALASKA
DATA SHEET

SHEET
2 OF
12

C:\users\jordan.zellhuber\projectwise\workingdir\mb-us-pw-bentley.com\mb-us-pw-02_jordan.zellhuber@mbakerint.com\dms39619\IAN_03_AIRPORT_LAYOUT_PLAN - EX-ULT-IAN_ SHEET_03



DESIGN REH
 DRAWN LIC
 CHECKED REH

STATE OF ALASKA
 DEPARTMENT OF TRANSPORTATION AND PUBLIC FACILITIES
 NORTHERN REGION-AVIATION

APPROVED: *Albert M.L. Beck* DATE 7/28/2021
 ALBERT M.L. BECK, P.E. DESIGN GROUP CHIEF

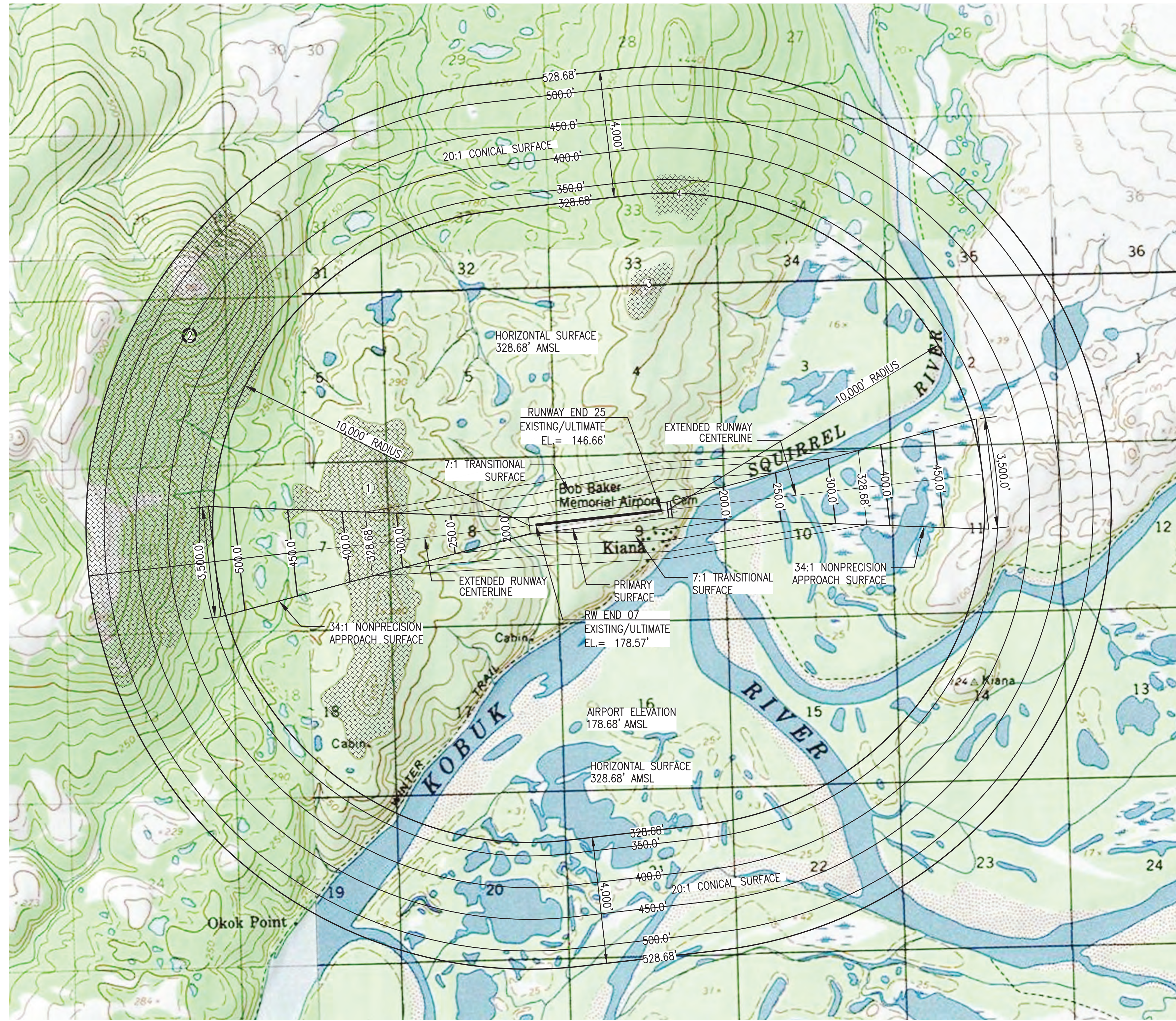
BY	DATE	NO.	REVISIONS	FAA

BY	DATE	NO.	REVISIONS	FAA
MBI	07/14/21		AS-BUILT	

BOB BAKER MEM. AIRPORT
 KIANA, ALASKA
 AIRPORT LAYOUT EXISTING/ULTIMATE

SHEET
3 OF
12

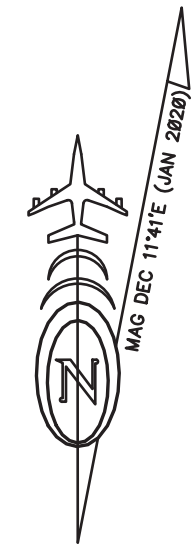
C:\users\jordan.zellhuber\appdata\local\bentley\projectwise\workingdir\mb-us-pw-bentley.com_mb-us-pw-02\jordan.zellhuber@mbakerintl.com_dms39619\IAN_04 & 05_ AIRSPACE PLAN-04_AIRSPACE PLAN



F.A.R. PART 77 SURFACE OBSTRUCTION TABLE					
ID NUMBER	PENETRATION ELEVATION	AMOUNT OF PENETRATION	DESCRIPTION	AFFECTED AREA	DISPOSITION
①	~361' MAXIMUM	~33'	TERRAIN	HORIZONTAL	TO REMAIN
②	~980' MAXIMUM	~438'	TERRAIN	CONICAL	TO REMAIN
③	~396' MAXIMUM	~68'	TERRAIN	HORIZONTAL	TO REMAIN
④	~360' MAXIMUM	~32'	TERRAIN	CONICAL/HORIZONTAL	TO REMAIN

ULTIMATE RUNWAY C.F.R. PART 77 DIMENSIONS UTILITY, NPA, >1S.M.

DESCRIPTION	DIMENSION
ESTABLISHED AIRPORT ELEVATION	178.68' AMSL
RUNWAY THRESHOLD ELEVATION	RW7: 178.57' \ RW25: 146.66'
PRIMARY SURFACE	500' X 4400'
HORIZONTAL SURFACE ELEVATION	328.68' AMSL
HORIZONTAL SURFACE RADIUS	10,000'
APPROACH SURFACE	400' X 1000' X 1500'
APPROACH SURFACE SLOPE	RW7: 34:1 \ RW25: 34:1
CONICAL SURFACE WIDTH	4000' @ 20:1
TRANSITIONAL SURFACE SLOPE	7:1



- NOTES:**
- SEE SHEET 5 FOR SURFACE COMPOSITE PROFILES.
 - SEE SHEETS 6 & 7 FOR INNER APPROACH OBSTRUCTION POINTS.

DESIGN REH
DRAWN LIC
CHECKED REH

STATE OF ALASKA
DEPARTMENT OF TRANSPORTATION AND PUBLIC FACILITIES
NORTHERN REGION-AVIATION

APPROVED: *Albert M.L. Beck*
ALBERT M.L. BECK, P.E. DATE 7/28/2021
DESIGN GROUP CHIEF

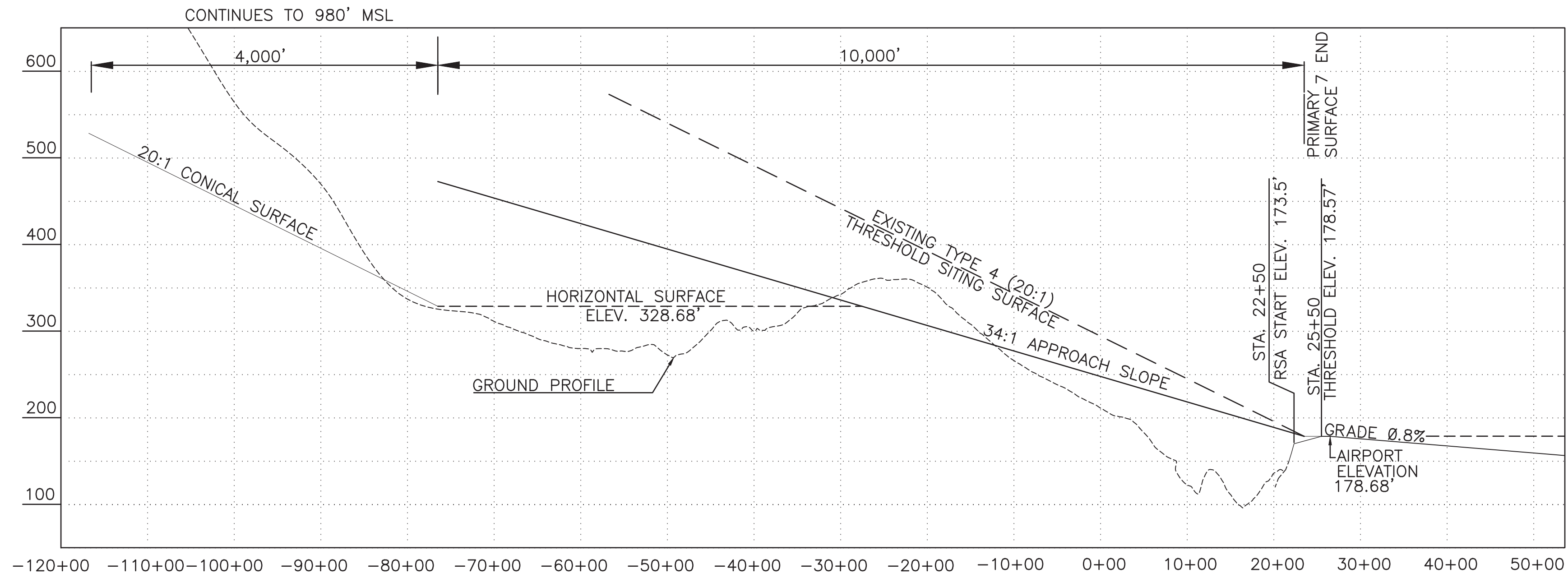
BY	DATE	NO.	REVISIONS	FAA

BY	DATE	NO.	REVISIONS	FAA

BOB BAKER MEM. AIRPORT
KIANA, ALASKA
AIRSPACE PLAN

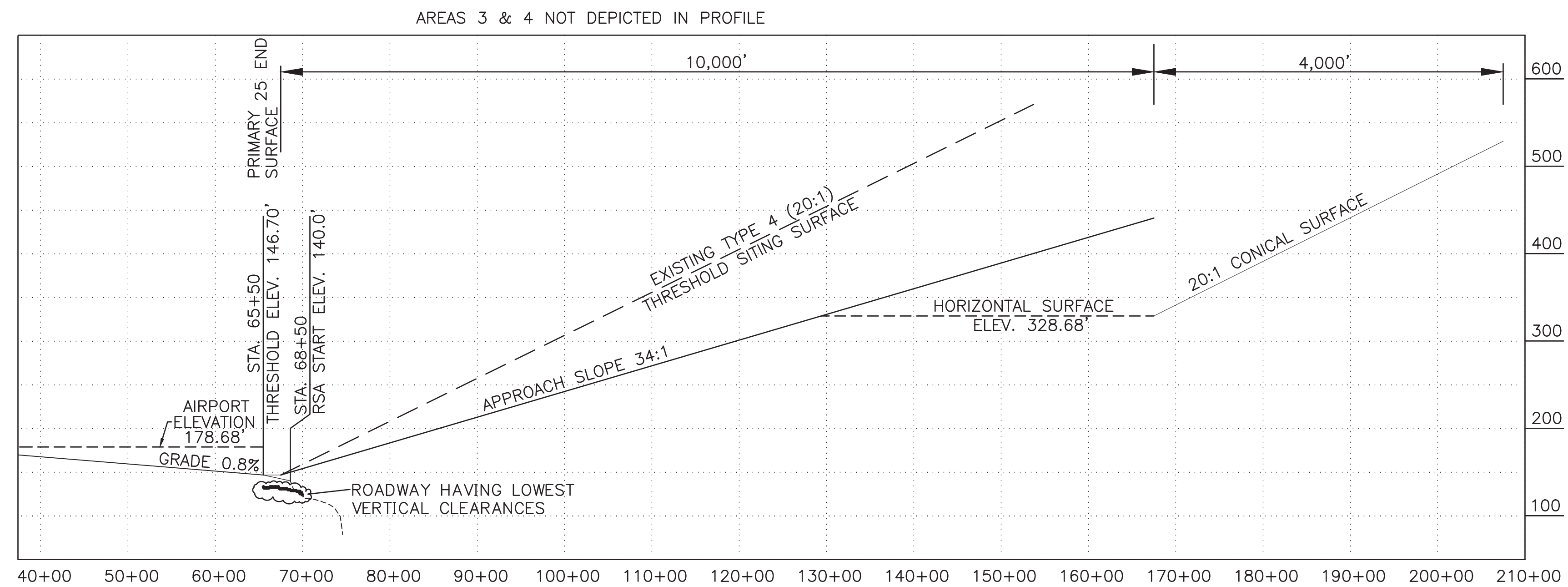
SHEET
4 OF
12

C:\users\jordan.zellhuber\appdata\local\bentley\projectwise\workingdir\mb-us-pw-02\jordan.zellhuber@mbakerintl.com\dms39619\AN_04 & 05_ AIRSPACE PLAN-05 AIRSPACE PROFILES



RUNWAY 7 APPROACH PROFILE
 SCALES: 1" = 1000' (HOR.)
 1" = 100' (VERT.)

1. SEE AIRPORT PROPERTY MAP (DRAWING SHEET 12) FOR PROPERTY LINE.
2. FAA CLEARANCE REQUIREMENTS NOTE: SECTION 77.23 OF FEDERAL AVIATION REGULATIONS (CFR) PART 77 SPECIFIES CLEARANCE REQUIREMENTS FOR ROADS, RAILROADS AND WATERWAYS. ACTUAL ELEVATIONS SHOWN REFLECT FIFTEEN FEET FOR A PUBLIC ROADWAY.
3. SEE SHEET 4 FOR AIRSPACE PLAN.
4. SEE SHEETS 6 AND 7 FOR INNER APPROACH OBSTRUCTION POINTS.



RUNWAY 25 APPROACH PROFILE
 SCALES: 1" = 1000' (HOR.)
 1" = 100' (VERT.)

DESIGN REH
 DRAWN LIC
 CHECKED REH

STATE OF ALASKA
 DEPARTMENT OF TRANSPORTATION AND PUBLIC FACILITIES
 NORTHERN REGION-AVIATION

APPROVED: *Albert M.L. Beck*
 ALBERT M.L. BECK, P.E. DATE 7/28/2021
 DESIGN GROUP CHIEF

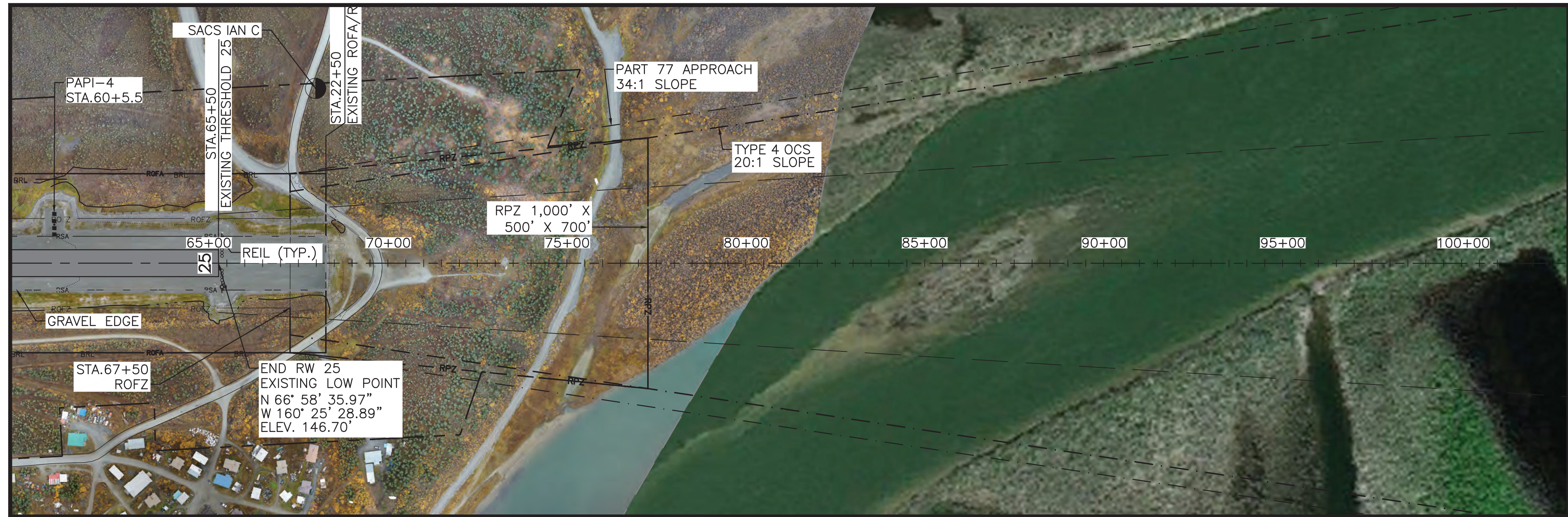
BY	DATE	NO.	REVISIONS	FAA

BY	DATE	NO.	REVISIONS	FAA

BOB BAKER MEM. AIRPORT
 KIANA, ALASKA
 AIRSPACE APPROACH PROFILES

SHEET 5 OF 12

C:\users\jordan.zellhuber\appdata\local\bentley\projectwise\workingdir\mb-us-pw-bentley.com_mb-us-pw-02\jordan.zellhuber@mbakerintl.com\dms39619\IAN_06 & 07 INNER APPROACH_061621-INNER APP_25



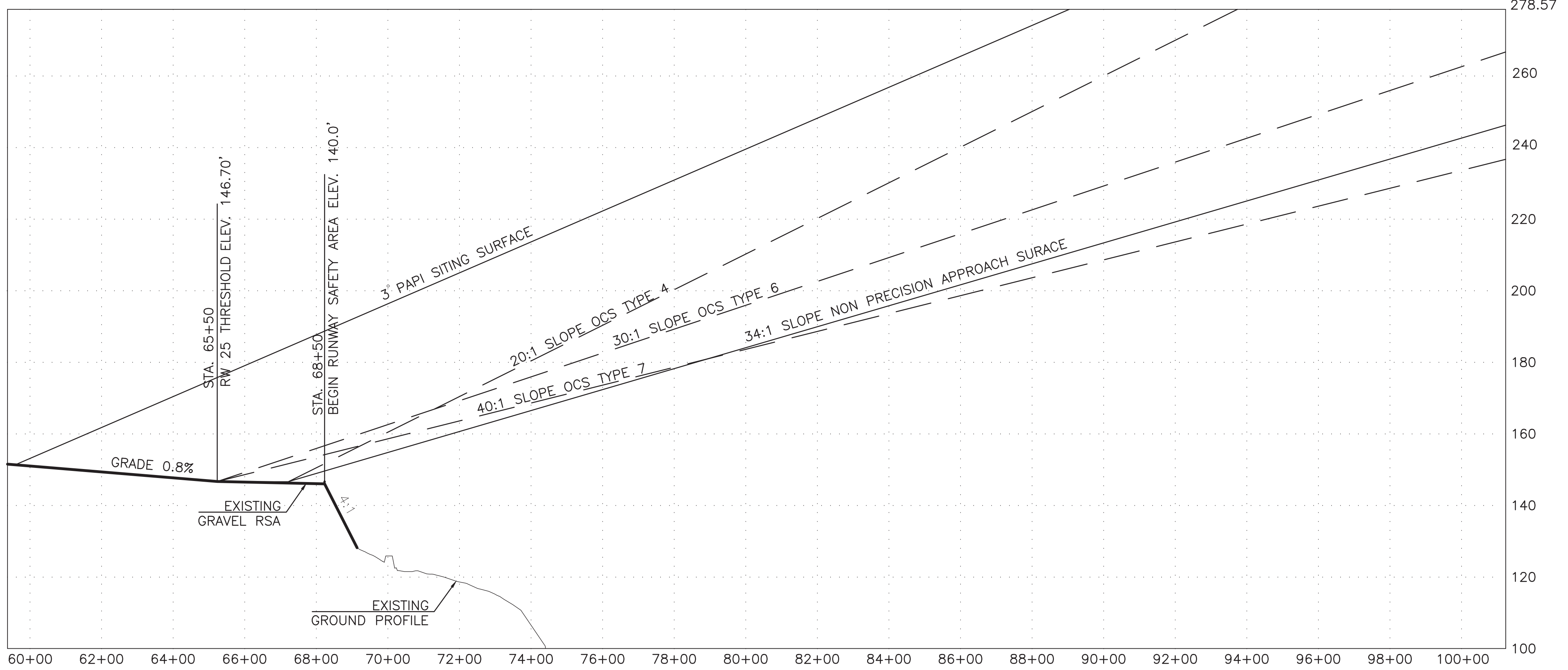
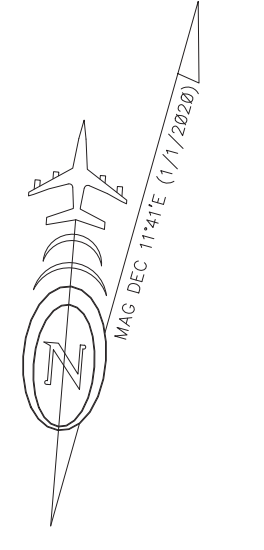
RUNWAY 25 INNER APPROACH PLAN



NOTES:

1. SEE AIRPORT PROPERTY MAP (SHEET 12) FOR PROPERTY LINE.
2. FAA CLEARANCE REQUIREMENTS NOTE: SECTION 77.23 OF FEDERAL AVIATION REGULATIONS (FAR) PART 77 SPECIFIES CLEARANCE REQUIREMENTS FOR ROADS, RAILROADS AND WATERWAYS. ACTUAL ELEVATIONS SHOWN REFLECT 15' FOR A PUBLIC ROADWAY.

NOTE
NO SURVEY OF KNOWN OR POTENTIAL OBSTRUCTIONS WAS CONDUCTED OR INCLUDED IN THE SURVEY PERFORMED BY LOUNSBURY AND ASSOCIATES (DATED: SEPTEMBER 2020).



RUNWAY 25 APPROACH PROFILE

DESIGN REH
DRAWN LIC
CHECKED REH

STATE OF ALASKA
DEPARTMENT OF TRANSPORTATION AND PUBLIC FACILITIES
NORTHERN REGION-AVIATION

APPROVED: *Albert M.L. Beck*
ALBERT M.L. BECK, P.E. DATE 7/28/2021
DESIGN GROUP CHIEF

BY	DATE	NO.	REVISIONS	FAA

BY	DATE	NO.	REVISIONS	FAA

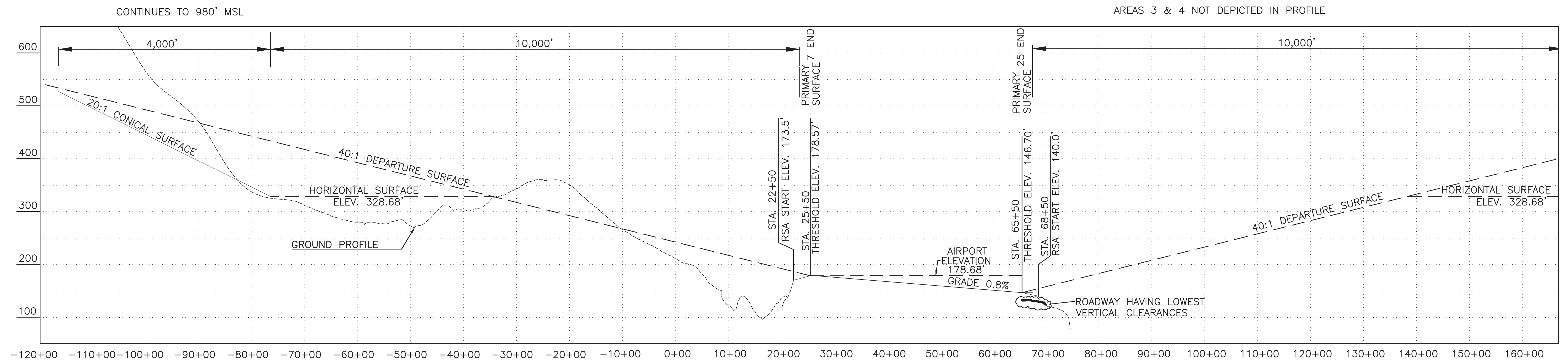
BOB BAKER MEM. AIRPORT
KIANA, ALASKA
INNER APPROACH RW END 25

SHEET
7 OF
12

C:\users\jordan.zellhuber\appdata\local\bentley\projectwise\workingdir\mb-us-pw-bentley.com_mb-us-pw-02\jordan.zellhuber@mbakerintl.com\dms39619\IAN_08 & 09 DEP SURFACES-08 DEP SURF RW25



RUNWAY 25 DEPARTURE SURFACE PLAN



RUNWAY 25 DEPARTURE PROFILE

DESIGN	REH
DRAWN	LIC
CHECKED	REH

STATE OF ALASKA
 DEPARTMENT OF TRANSPORTATION AND PUBLIC FACILITIES
 NORTHERN REGION-AVIATION

APPROVED: *Albert M.L. Beck* DATE 7/28/2021
 ALBERT M.L. BECK, P.E. DESIGN GROUP CHIEF

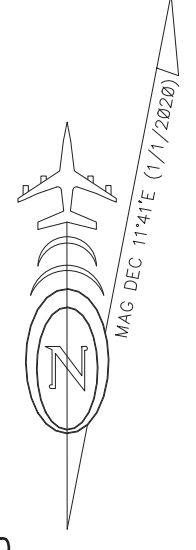
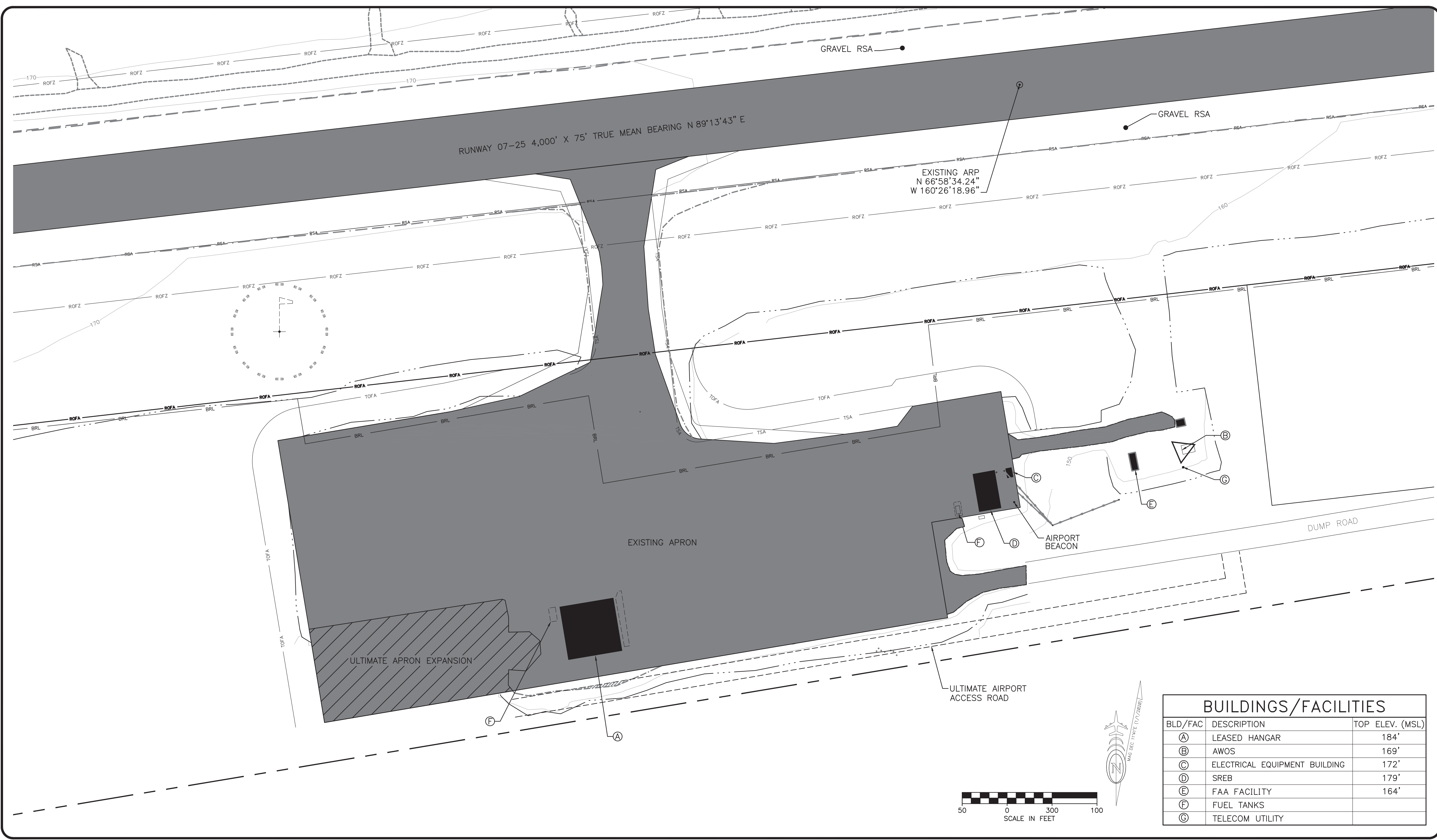
BY	DATE	NO.	REVISIONS	FAA

BY	DATE	NO.	REVISIONS	FAA

BOB BAKER MEM. AIRPORT
 KIANA, ALASKA
 DEPARTURE SURFACE RUNWAY 25

SHEET
 8 OF 12

C:\users\jordan.zellhuber\appdata\local\bentley\projectwise\workingdir\mb-us-pw-02\jordan.zellhuber@mbakerintl.com\dms39619\AN_10_AIRPORT_TERMINAL_AREA-18X22\$A001_045ALB001



BUILDINGS/FACILITIES		
BLD/FAC	DESCRIPTION	TOP ELEV. (MSL)
(A)	LEASED HANGAR	184'
(B)	AWOS	169'
(C)	ELECTRICAL EQUIPMENT BUILDING	172'
(D)	SREB	179'
(E)	FAA FACILITY	164'
(F)	FUEL TANKS	
(G)	TELECOM UTILITY	

DESIGN REH
 DRAWN LIC
 CHECKED REH

STATE OF ALASKA
 DEPARTMENT OF TRANSPORTATION AND PUBLIC FACILITIES
 NORTHERN REGION-AVIATION

APPROVED: *Albert M.L. Beck*
 ALBERT M.L. BECK, P.E. DATE 7/28/2021
 DESIGN GROUP CHIEF

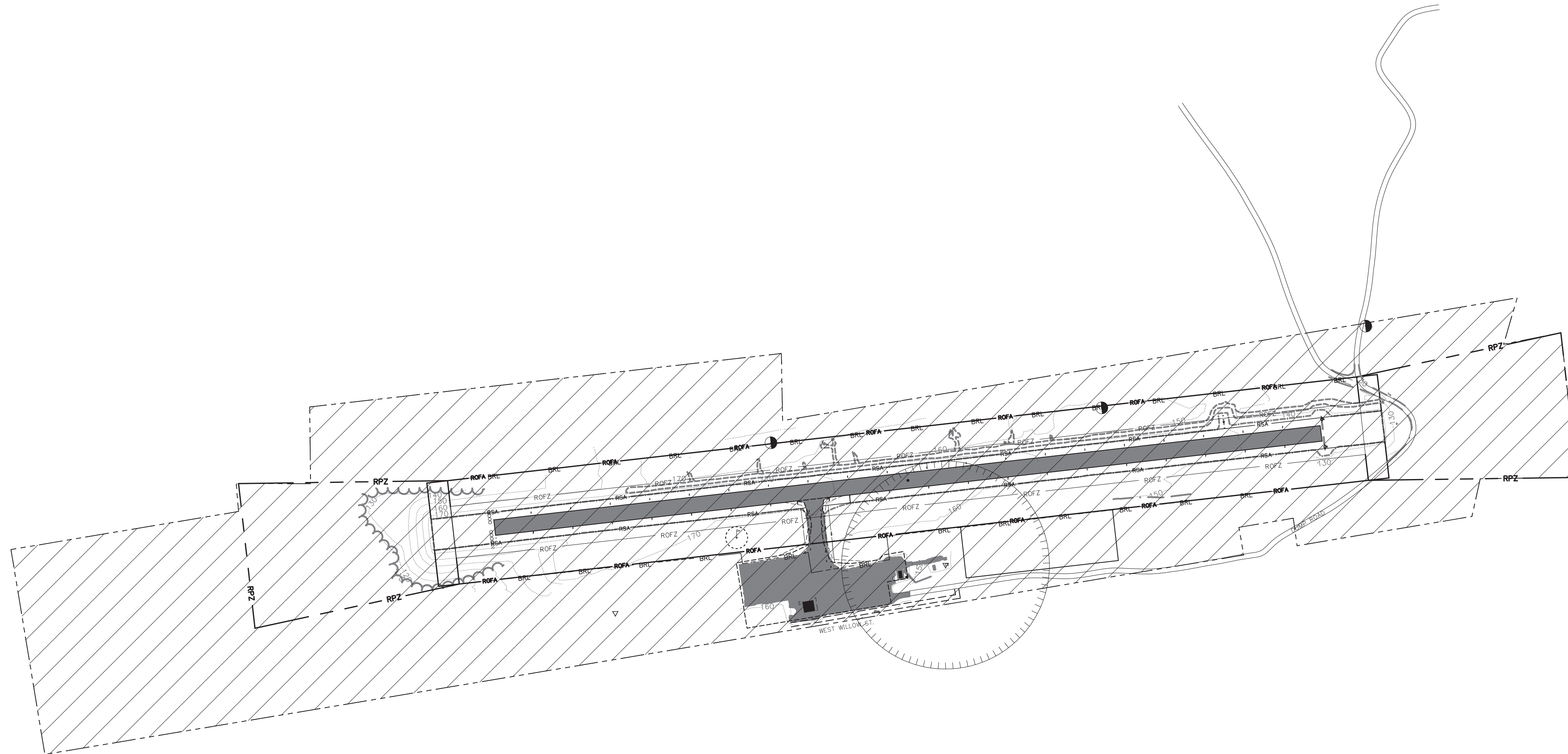
BY	DATE	NO.	REVISIONS	FAA

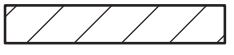
BY	DATE	NO.	REVISIONS	FAA

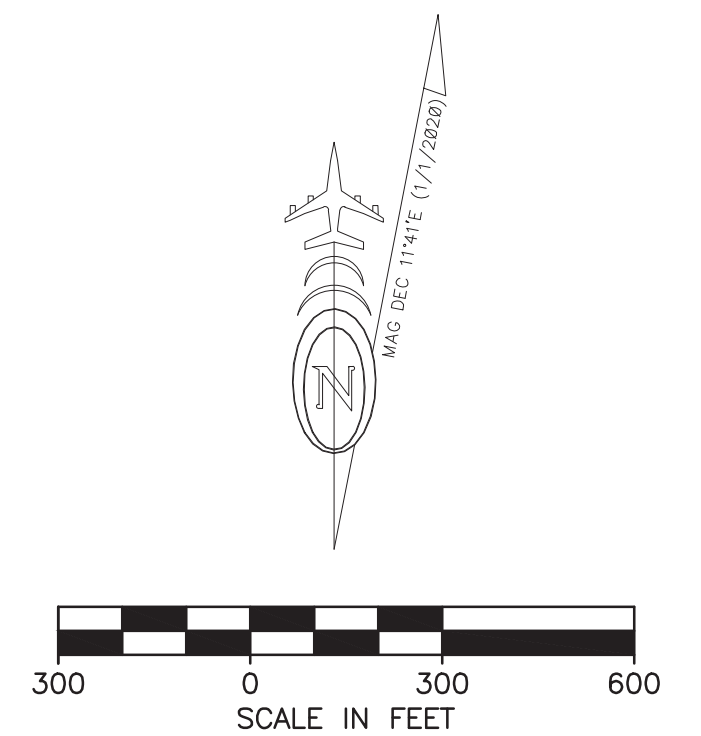
BOB BAKER MEM. AIRPORT
 KIANA, ALASKA
 AIRPORT TERMINAL AREA

SHEET
 10
 OF
 12

C:\users\jordan.zellhuber\appdata\local\bentley\projectwise\workingdir\mb-us-pw-bentley.com\mb-us-pw-bentley.com\mb-us-pw-02\jordan.zellhuber@mbakerintl.com\dms39619\IAN_11_LAND_USE_PLAN-IAN_SHEET_11

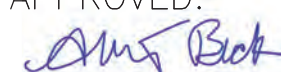


LEGEND	
ON-AIRPORT LAND USE	
	AIRFIELD OPERATIONS



DESIGN REH
 DRAWN LIC
 CHECKED REH

STATE OF ALASKA
 DEPARTMENT OF TRANSPORTATION AND PUBLIC FACILITIES
 NORTHERN REGION-AVIATION

APPROVED:  DATE 7/28/2021
 ALBERT M.L. BECK, P.E. DESIGN GROUP CHIEF

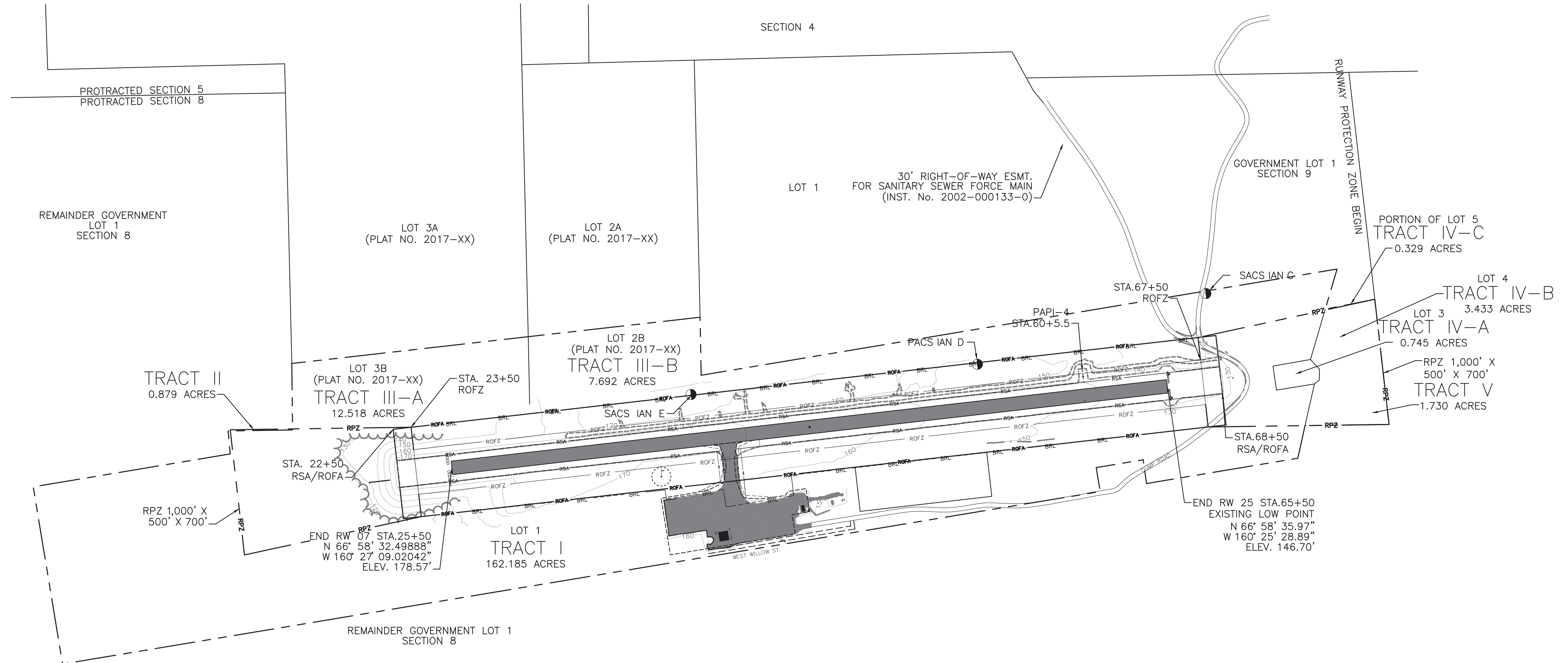
BY	DATE	NO.	REVISIONS	FAA

BY	DATE	NO.	REVISIONS	FAA
MBI	07/14/21		AS-BUILT	

BOB BAKER MEM. AIRPORT
 KIANA, ALASKA
 LAND USE PLAN

SHEET
 11 OF
 12

C:\users\jordan.zellhuber\projectwise\workingdir\local\beniley\projectwise\workingdir\mb-us-pw-bentley.com_mb-us-pw-bentley.com\AN_12_AIRPORT_PROPERTY_MAP-AN_SHEET_12

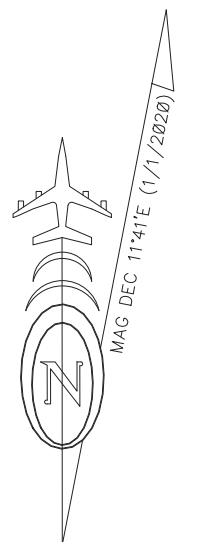


PROPERTY STATUS

TRACT	PARCEL	ACRES	GRANTOR	INTEREST	CONVEYANCE DOC.	ACQ. DATE	FAA GRANT #	RD. INFO
I		162.185	U.S.A	FEE SIMPLE	PATENT NO. 1236827	7/16/1964	N/A	NOATAK-KOBLUK 27/260
II		0.879	NANA REGIONAL CORP.	FEE SIMPLE	WARRANTY DEED	9/26/2017	3-02-0146-005-2019	KOTZEBUE 2017-000434-0
III	A	12.518	ANGELINE SHELTERS	FEE SIMPLE	WARRANTY DEED	3/13/2019	3-02-0146-005-2019	KOTZEBUE 2019-000860-0
III	B	7.592	VINCENT L. SHUERCH	FEE SIMPLE	WARRANTY DEED	9/26/2017	3-02-0146-005-2019	KOTZEBUE 2017-000435-0
IV	A	0.745	NANA REGIONAL CORP.	AVIGATION EASEMENT	PHE & ROW	9/16/2017	3-02-0146-005-2019	KOTZEBUE 2017-000436-0
IV	B	3.433	NANA REGIONAL CORP.	AVIGATION EASEMENT	PHE & ROW	9/16/2017	3-02-0146-005-2019	KOTZEBUE 2017-000436-0
IV	C	0.329	NANA REGIONAL CORP.	AVIGATION EASEMENT	PHE & ROW	9/16/2017	3-02-0146-005-2019	KOTZEBUE 2017-000437-0
II		1.730	SOA DNR	INTERAGENCY LAND MANAGEMENT AGREEMENT	ILMA-ABL 421192	6/28/2019	3-02-0146-005-2019	KOTZEBUE 2019-000195-0

NOTES:

- 1) THIS PLAN REFLECTS THE EXISTING PROPERTY BOUNDARY AND TRACTS.
- 2) THE INFORMATION ON THIS DRAWING IS DERIVED FROM A PROPERTY PLAN, DATED JUNE 28, 2019.
- 3) EXISTING BASE MAPPING WAS OBTAINED FROM A FIELD SURVEY PERFORMED BY LOUNSBURY AND ASSOCIATES, INC. IN SEPTEMBER 2020.



DESIGN REH
DRAWN LIC
CHECKED REH

STATE OF ALASKA
DEPARTMENT OF TRANSPORTATION AND PUBLIC FACILITIES
NORTHERN REGION-AVIATION
APPROVED: *Albert M.L. Beck*
DATE 7/28/2021
ALBERT M.L. BECK, P.E. DESIGN GROUP CHIEF

BY	DATE	NO.	REVISIONS	FAA

BY	DATE	NO.	REVISIONS	FAA

BOB BAKER MEM. AIRPORT
KIANA, ALASKA
AIRPORT PROPERTY MAP

SHEET
12 OF
12