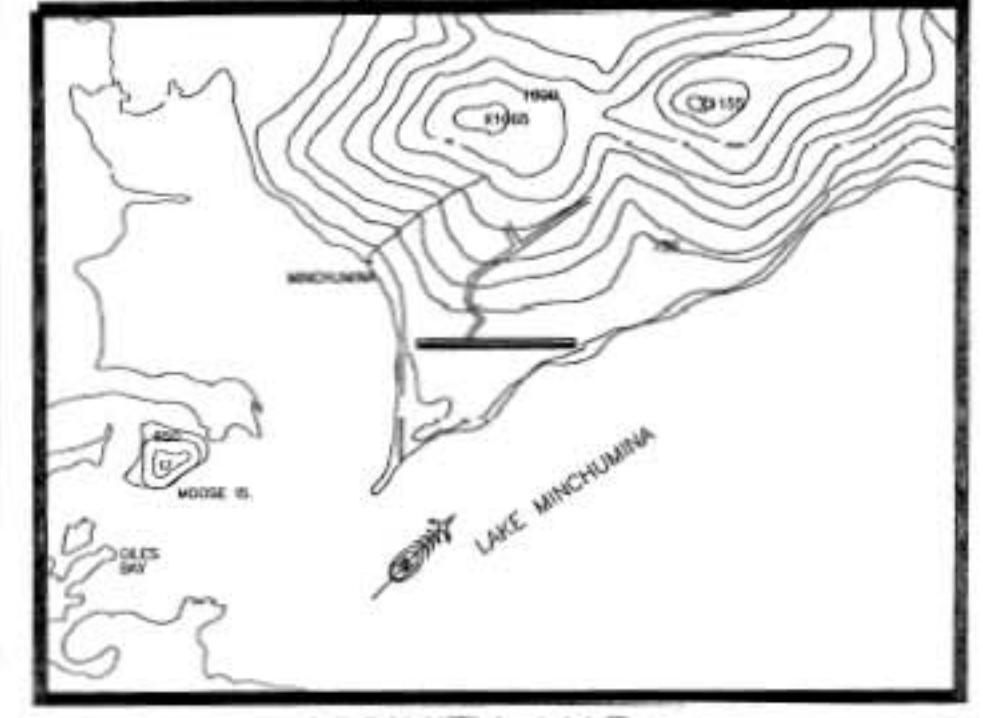


LOCATION MAP
NO SCALE



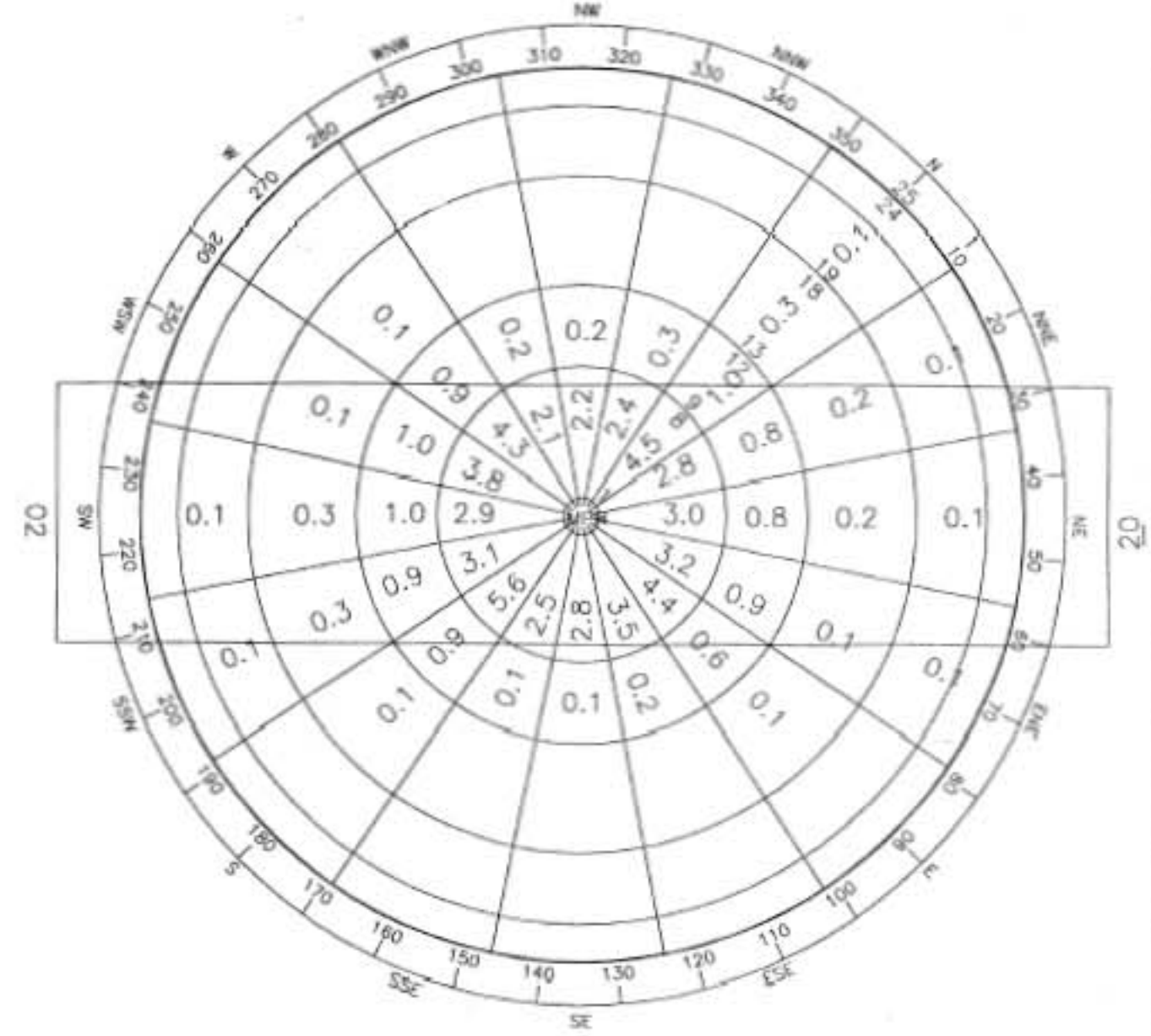
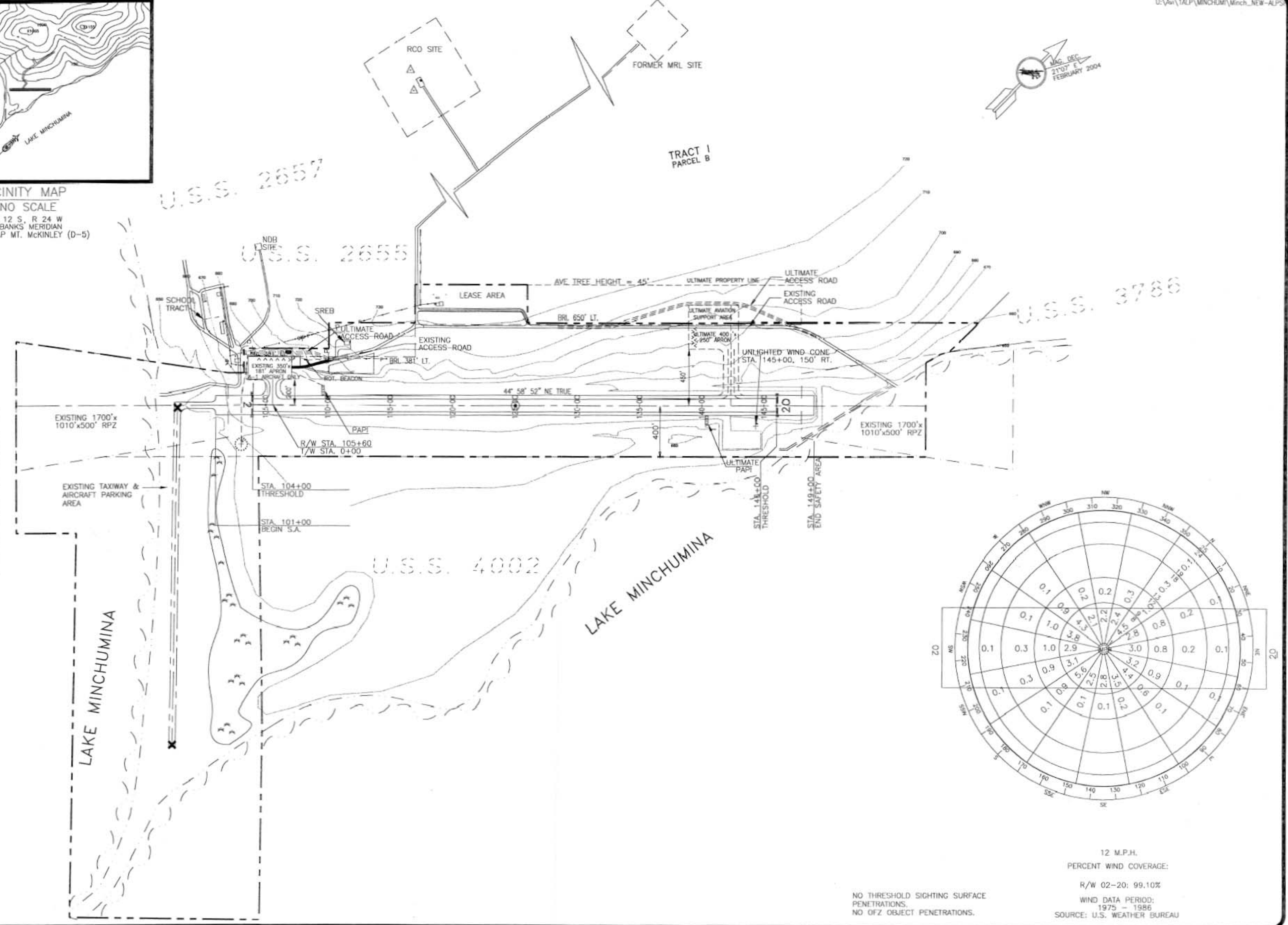
VICINITY MAP
NO SCALE
T 12 S, R 24 W
FAIRBANKS MERIDIAN
USGS MAP MT. MCKINLEY (D-5)

	RUNWAY 2-20	
	EXISTING	ULTIMATE
% WIND COVERAGE	99.10%	SAME
INSTRUMENT RUNWAY	NP	SAME
RUNWAY SURFACE TYPE	GRAVEL	SAME
PAYMENT STRENGTH	N/A	SAME
APPROACH SURFACES	34:1/34:1	SAME
VISIBILITY MINIMUMS	≥1 MILE	SAME
RUNWAY LIGHTING	MIRL	SAME
RUNWAY MARKING	NONE	SAME
NAVIGATION AIDS	BEACON/PAPI	SAME
R/W DIMENSIONS	100'x4200'	SAME
R/W SAFETY AREA	150'x4800'	SAME
R/W OBJECT FREE AREA (ROFA)	500'x4800'	SAME

AIRPORT DATA		
	EXISTING	ULTIMATE
AIRPORT ELEVATION (NAVD BR)	676.67'	681.53'
AIRPORT REFERENCE CODE	B-II	SAME
MEAN MAX. DAILY TEMP. HOTTEST MONTH (JULY)	50.9°F	SAME
TAXIWAY LIGHTING	MTL	SAME
RAMP LIGHTING	FLOODS	SAME
AIRPORT AND TERMINAL NAVAIDS	VHF/NDB	SAME
COMMUNICATION AIDS	NONE	SAME
AIRPORT REFERENCE POINT (ARP)	LAT. 63°53'09.59"N LONG. 152°18'06.76"W	
THRESHOLD R/W 2	LAT. 63°52'54.97"N LONG. 152°18'39.90"W	
THRESHOLD R/W 20	LAT. 63°53'24.21"N LONG. 152°17'33.59"W	

DATA BASE CONTROL YEAR: NAD 83

LEGEND		
	EXISTING	ULTIMATE
PROPERTY LINE	---	---
BUILDING RESTRICTION LINE (B.R.L.)	B.R.L.	B.R.L.
DEVELOPMENT	---	---
WIND CONE & SEGMENTED CIRCLE	☼	SAME
WIND CONE ONLY	☼	SAME
BUILDINGS	■	■
ROADWAYS	==	==
FENCING	---	---
REIL	■	■
AIRPORT REFERENCE POINT	●	●
ROTATING BEACON	☼	☼
ANTENNAE/TOWERS	▲	▲
PAPI	□	□
SHORELINE/WATERLINE	~	~
TREELINE	~	~
THRESHOLD	---	---
OVERHEAD POWER	—P—	—P—



12 M.P.H.
PERCENT WIND COVERAGE:
R/W 02-20: 99.10%
WIND DATA PERIOD:
1975 - 1986
SOURCE: U.S. WEATHER BUREAU

DESIGN	CML	
DRAWN	CAT	
CHECKED	PDM	
BY	DATE	REVISIONS

STATE OF ALASKA
DEPARTMENT OF TRANSPORTATION AND PUBLIC FACILITIES
NORTHERN REGION-DESIGN AND CONSTRUCTION-AVIATION

APPROVED
Patricia D. Miller
PATRICIA D. MILLER, P.E.

DATE 3/15/04
DESIGN GROUP CHIEF

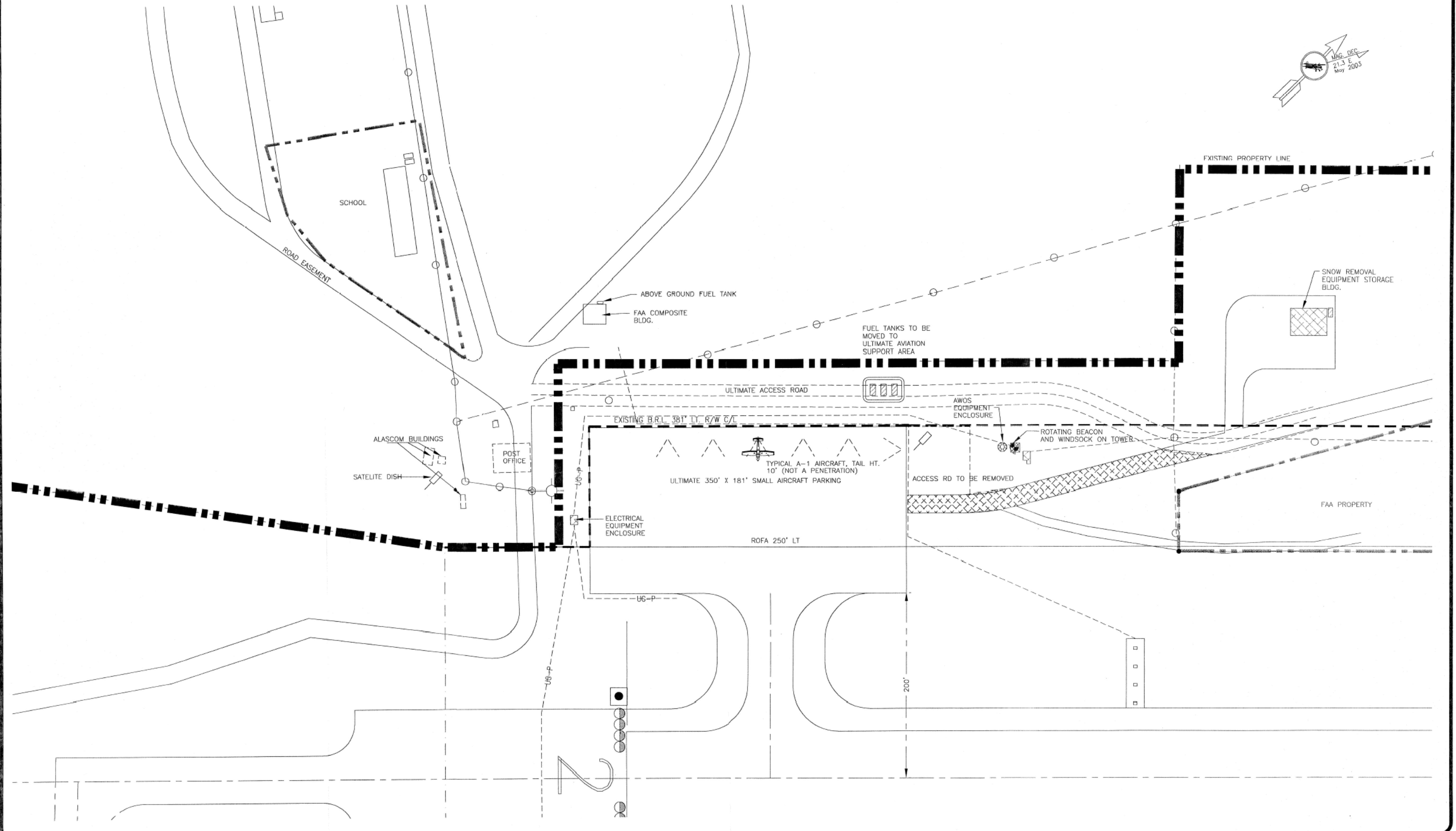
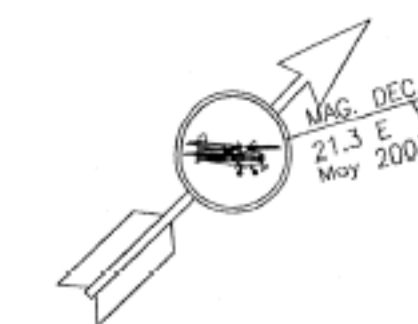
REVISED AIRPORT LAYOUT PLAN APPROVED
BY LETTER DATED: 3/23/04
[Signature]
AIRPORTS DIVISION,
ALASKAN REGION, AAL-601
AIRSPACE REVIEW #03AAL-70NRA

THIS ALP SUPERSEDES ALP DATE 9-15-88, FAA APPROVED 9-22-88 AND REVISED THROUGH 8-27-96.
THIS ALP HAS BEEN PREPARED FROM THE PREVIOUS ALP, FROM CURRENT PROPERTY PLANS AND FROM THE AS-BUILTS DATED 5-31-90.

300 100
400 200 0 400 800 1200
CONTOUR INTERVAL 10 FEET

MINCHUMINA AIRPORT
AIRPORT LAYOUT PLAN

SHEET
1 OF 5



DESIGN			
DRAWN			
CHECKED			
BY	DATE	REVISIONS	

STATE OF ALASKA
 DEPARTMENT OF TRANSPORTATION AND PUBLIC FACILITIES
 NORTHERN REGION-DESIGN AND ENGINEERING SERVICES

APPROVED
Patricia D. Miller
 PATRICIA D. MILLER, P.E.

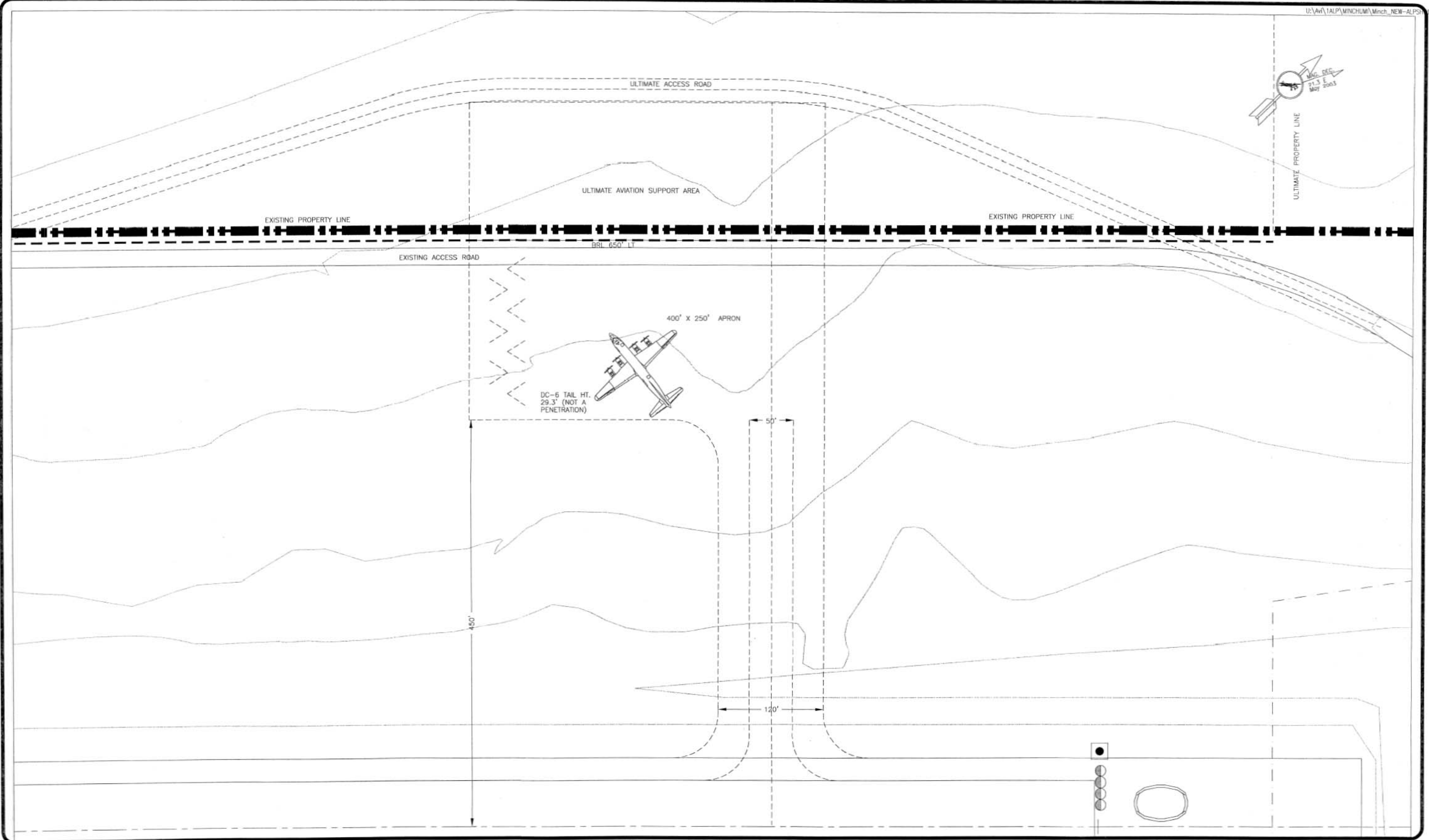
DATE 7/15/04
 DESIGN GROUP CHIEF

REVISED AIRPORT LAYOUT PLAN APPROVED
 BY LETTER DATED: 3/23/04
[Signature]
 AIRPORT DIVISION,
 ALASKAN REGION, AAL-601
 AIRSPACE REVIEW #03AAL-70NRA



MINCHUMINA AIRPORT
 EXISTING SMALL AIRCRAFT
 TERMINAL PLAN

SHEET
 2 OF
 5



DESIGN			
DRAWN			
CHECKED			
BY	DATE	REVISIONS	

STATE OF ALASKA
 DEPARTMENT OF TRANSPORTATION AND PUBLIC FACILITIES
 NORTHERN REGION-DESIGN AND ENGINEERING SERVICES

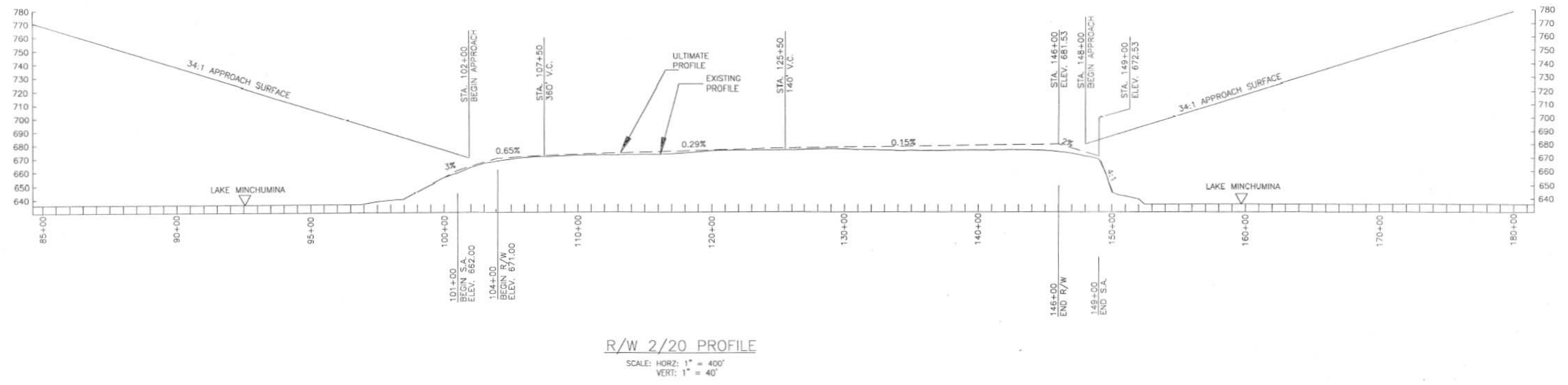
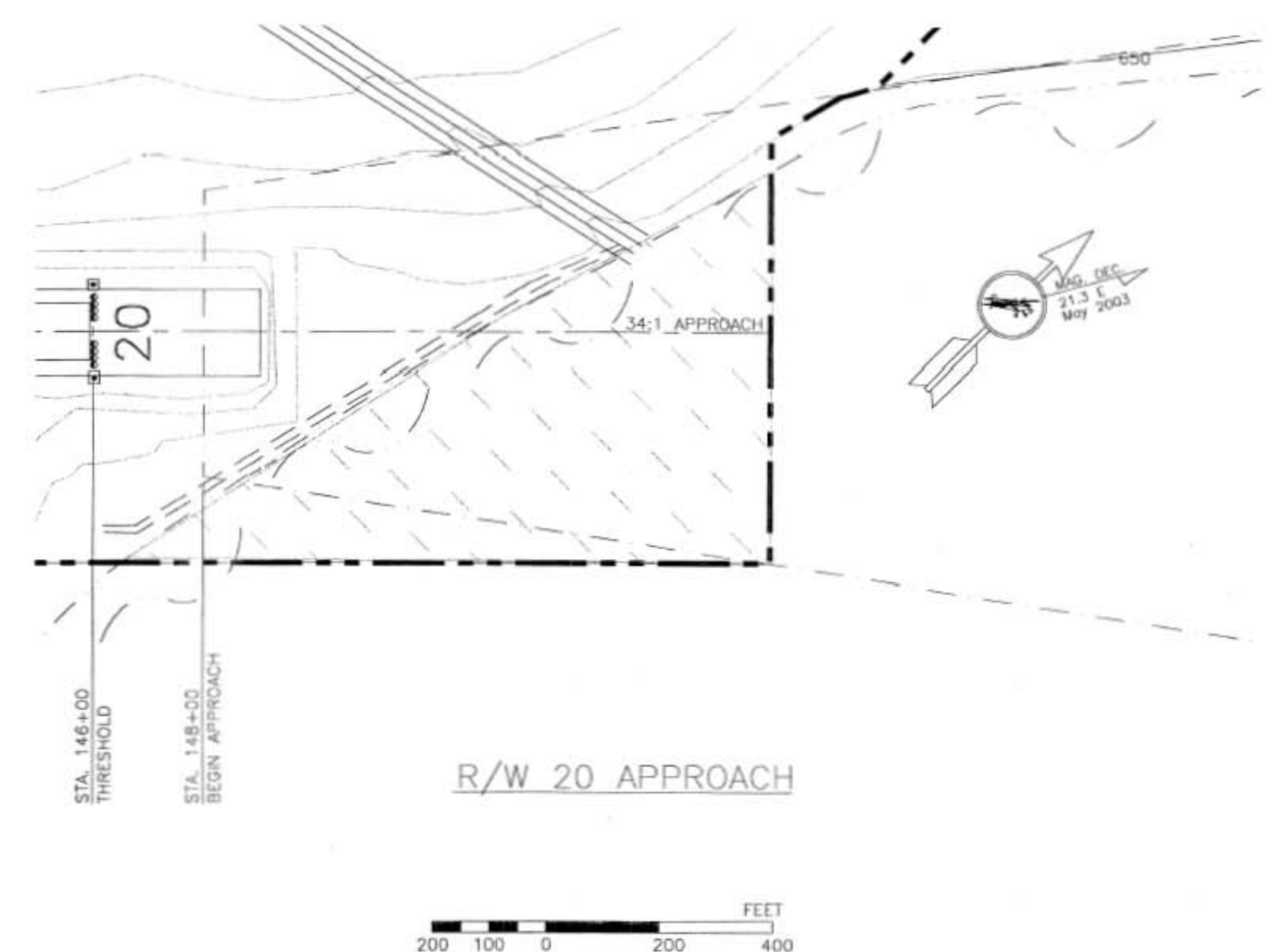
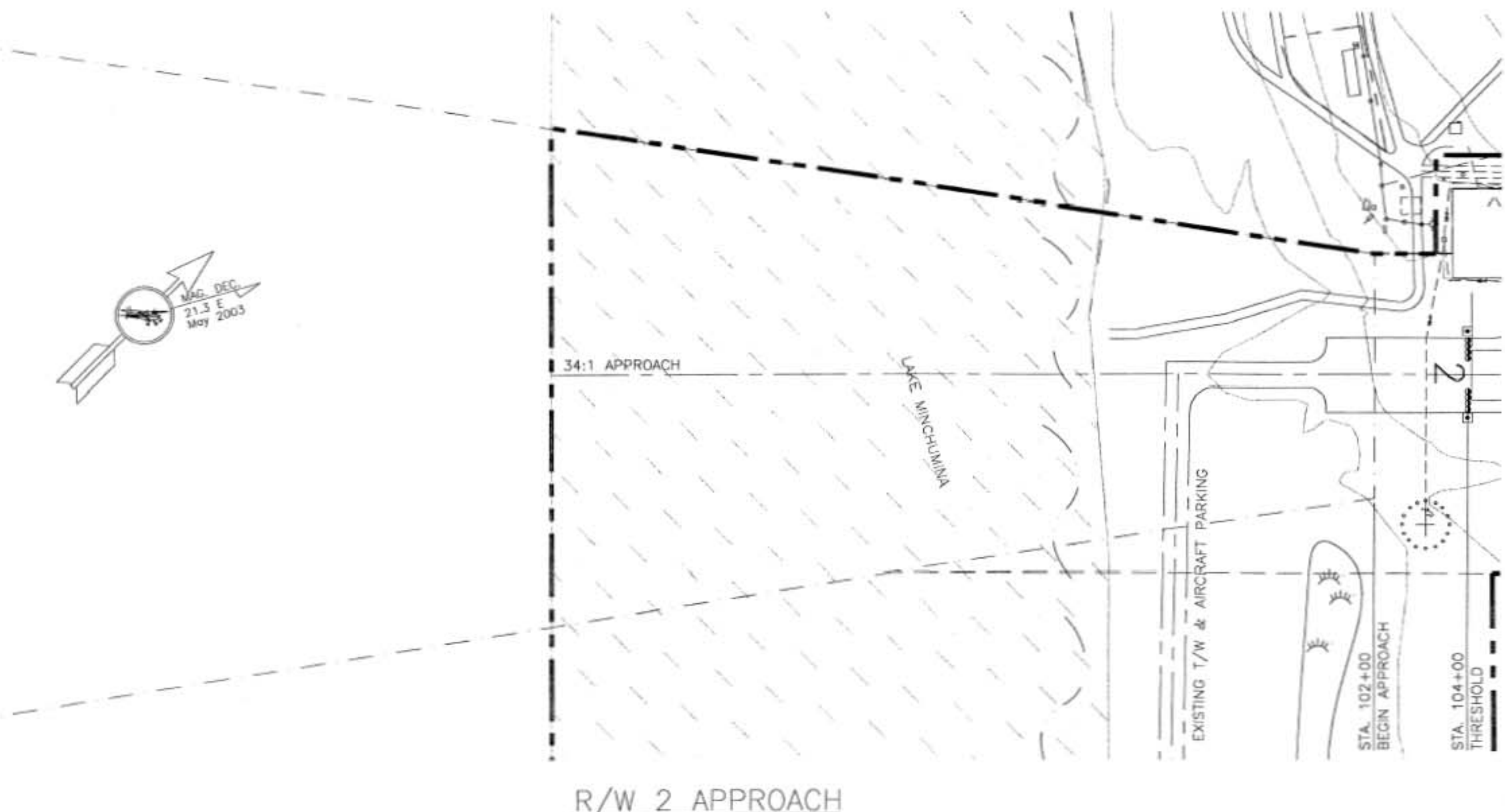
APPROVED
Patricia D. Miller
 PATRICIA D. MILLER, P.E.

DATE 3/15/04
 DESIGN GROUP CHIEF

REVISED AIRPORT LAYOUT PLAN APPROVED
 BY *[Signature]* DATED: 3/23/04
 AIRPORTS DIVISION,
 ALASKAN REGION, AAL-601
 AIRSPACE REVIEW #03AAL-70NRA

MINCHUMINA AIRPORT
 ULTIMATE TERMINAL PLAN

SHEET
 3 OF 5



DESIGN_CML			
DRAWN_CAT			
CHECKED_PDM			
BY	DATE	REVISIONS	

STATE OF ALASKA
DEPARTMENT OF TRANSPORTATION AND PUBLIC FACILITIES
NORTHERN REGION-DESIGN AND CONSTRUCTION-AVIATION

APPROVED
Patricia D. Miller
PATRICIA D. MILLER, P.E.

DATE 3/22/04
DESIGN GROUP CHIEF

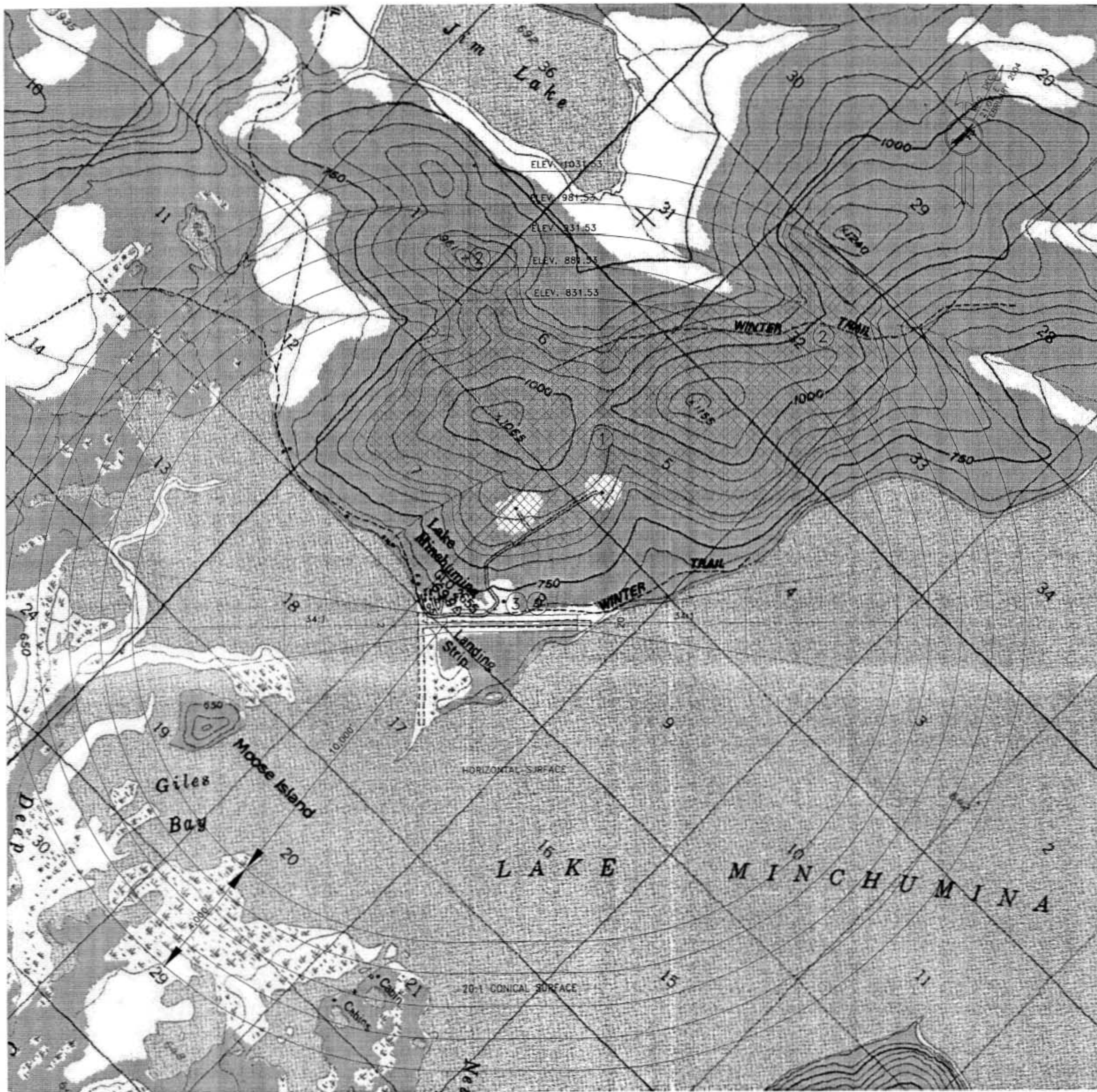
REVISED AIRPORT LAYOUT PLAN APPROVED
BY LETTER DATED: 3/23/04

[Signature]

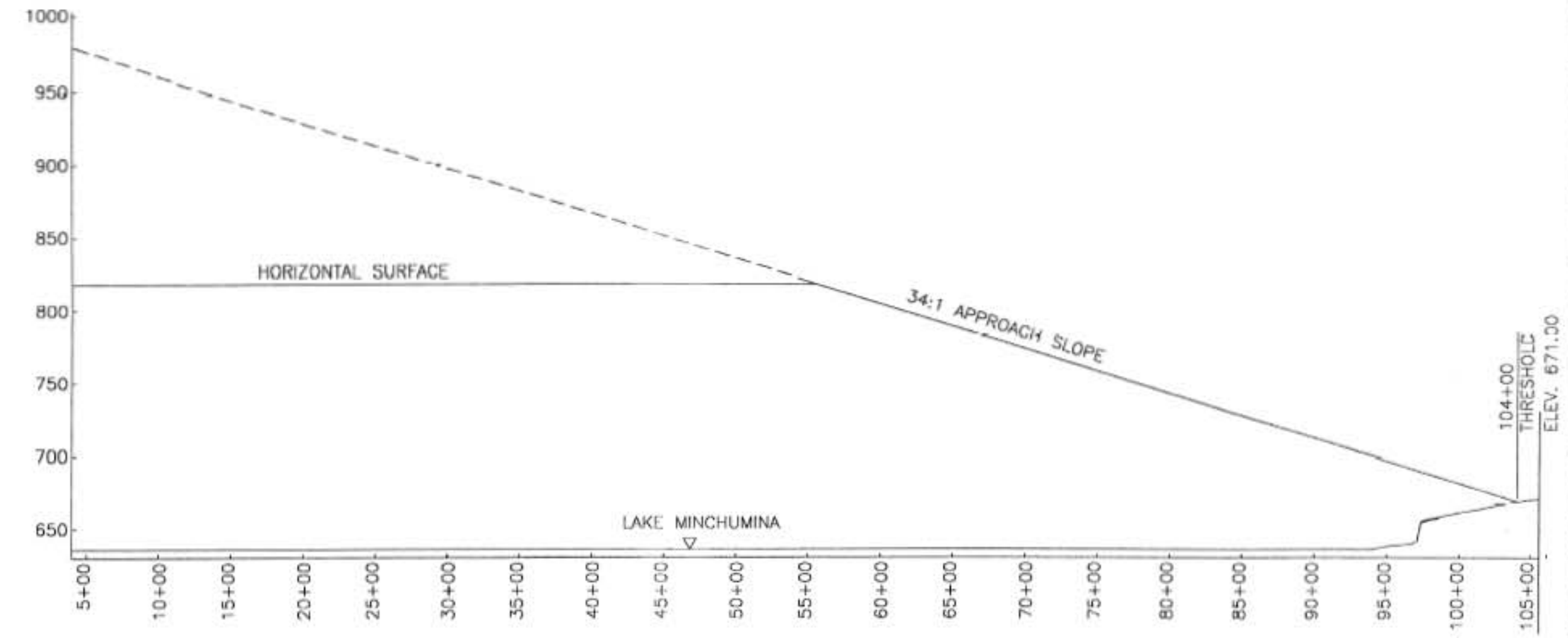
AIRPORT DIVISION,
ALASKAN REGION, AAL 60
AIRSPACE REVIEW #03AAL-70NRA

MINCHUMINA AIRPORT
INNER PORTION OF THE
APPROACH SURFACE
PLANS AND PROFILE

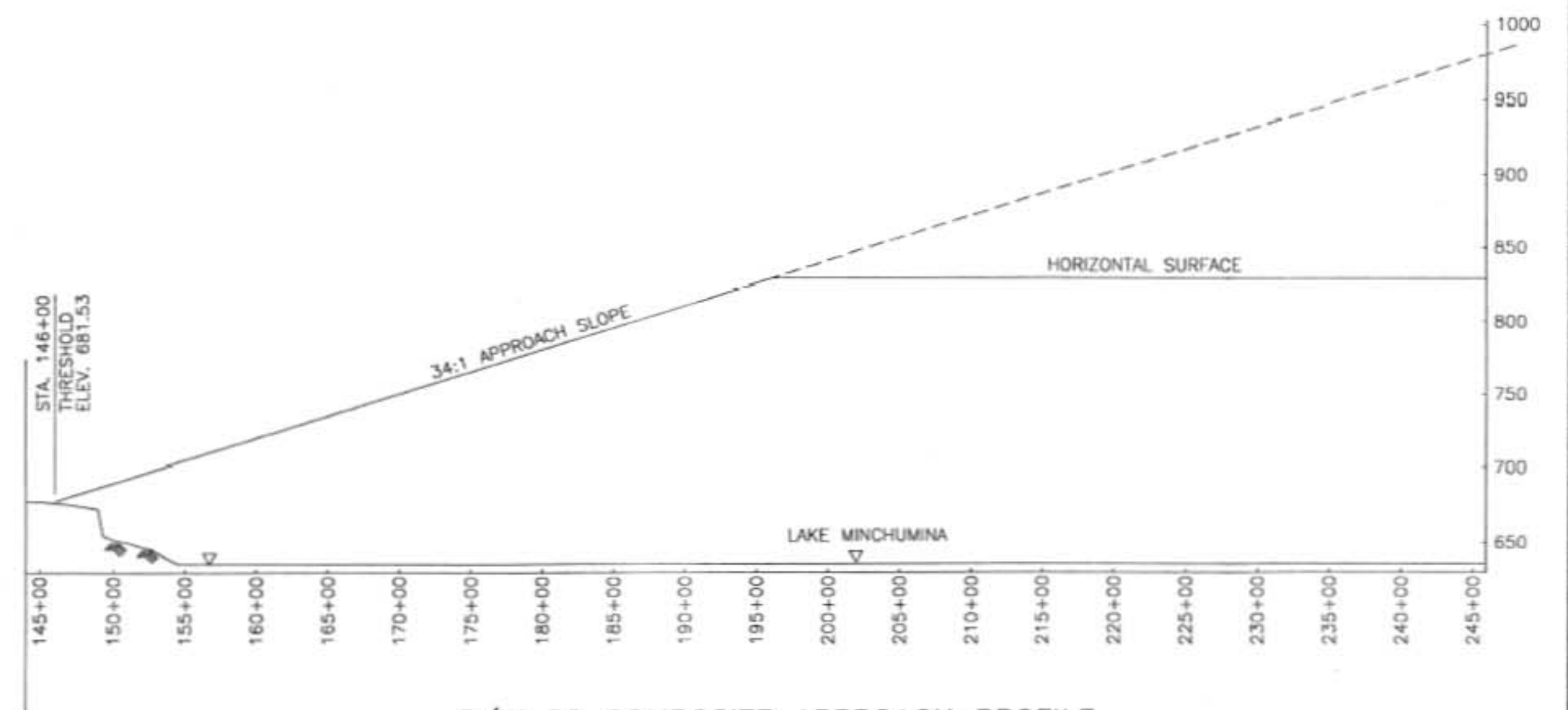
SHEET
4 OF
5



VICINITY MAP
T 12 S R 24 W
FAIRBANKS MERIDIAN
USGS MAP MT. MCKINLEY (D-5)



R/W 2 COMPOSITE APPROACH PROFILE



R/W 20 COMPOSITE APPROACH PROFILE

OBSTRUCTION TABLE				
#	STRUCTURE NAME	TOP ELEV.	SURFACE PENETRATION	PROPOSED DISPOSITION OF OBSTRUCTION
1	HILLS NW OF R/W	1155'	326.3 HORZ SURF	NO ACTION
2	HILLS NW OF R/W	1155'	+128.7' CONICAL	NO ACTION
3	TERRAIN NW OF R/W	702	+26 NW PRIMARY	NO ACTION
4	TERRAIN NW OF R/W	714	+26 TRANSITIONAL	NO ACTION



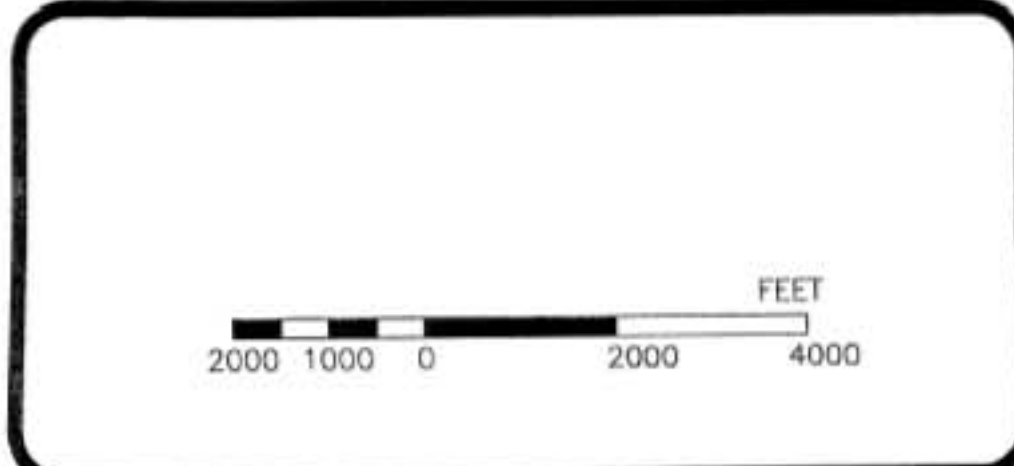
DESIGN_CML	
DRAWN_CAT	
CHECKED_PDM	
BY	DATE
	REVISIONS

STATE OF ALASKA
DEPARTMENT OF TRANSPORTATION AND PUBLIC FACILITIES
NORTHERN REGION-DESIGN AND CONSTRUCTION-AVIATION

APPROVED
Patricia D. Miller
PATRICIA D. MILLER, P.E.

DATE 3/15/04
DESIGN GROUP CHIEF

REVISED AIRPORT LAYOUT PLAN APPROVED
BY LETTER DATED: 3/23/04
[Signature]
AIRPORT DIVISION,
ALASKAN REGION, AAL-601
AIRSPACE REVIEW #03AAL-70NRA



MINCHUMINA AIRPORT
AIRSPACE &
COMPOSITE APPROACH PROFILES

SHEET
5 OF 5