

LEGEND	
EXISTING	AIRPORT PROPERTY LINE
---	PROPERTY LINE
⊕	BOUNDARY MONUMENTS
○	FOUND 1 1/2" CAP
●	FOUND 2" AL CAP
---	RUNWAY SAFETY AREA (RSA)
---	RUNWAY OBJECT FREE AREA (ROFA)
---	BUILDING RESTRICTION LINE (BRL)
---	SECURITY FENCING
⊙	AIRPORT REFERENCE POINT (ARP)
○	SEGMENTED CIRCLE
⊙	COMPASS ROSE
---	TAXIWAY IDENTIFIER
---	ROADWAYS
---	PAVEMENT
---	GRASS TAXIWAYS
---	TIEDOWNS
---	BUILDINGS
---	RUNWAY, APRON, TAXIWAY LIGHTING
---	TREES & BRUSH
---	WINDSOCK
---	LIGHTPOLE
---	POWER POLE
---	SURFACE STORM FLOW
---	STORM DRAIN
---	UNDERGROUND ELECTRIC
---	WATER
---	VASI APPROACH SLOPE INDICATOR
---	FENCE GATE
---	FUEL ISLAND
---	SECTION CORNERS
---	RUNWAY PROTECTION ZONE

RUNWAY DATA				
RUNWAY	RUNWAY 7-25		RUNWAY 7U-25U	
	EXISTING	EXISTING		
EFFECTIVE GRADIENT (%)	0.35%		.02%	
10.5 KNOT WIND COVERAGE	94.9%		94.9%	
RUNWAY SURFACE	ASPHALT		ASPHALT	
PAVEMENT STRENGTH POUNDS	155,000		12,500	
APPROACH SURFACES (WITH VISIBILITY MINIMUMS)	7 NOT LESS THAN 1 MILE		25 NOT LESS THAN 1 MILE	
RUNWAY LIGHTING	MIRL		NONE	
RUNWAY MARKING	NON PRECISION		VISUAL	
RUNWAY VISUAL AND INSTRUMENT NAVIGATION AIDS	7 VASI-2, SEGMENTED CIRCLE		W/ SEGMENTED CIRCLE	
RUNWAY SAFETY AREA	5600' X 150'		2000' X 250'	
RUNWAY DIMENSIONS	5000' X 132'		1500' X 60'	
RUNWAY SURFACE	ASPHALT		ASPHALT	
RUNWAY END COORDINATES**				
	7 LATITUDE	60°28'29.86"	70°28'37.72"	
	7 LONGITUDE	151°03'07.54"	151°01'36.50"	
	25 LATITUDE	60°28'29.84"	60°28'37.71"	
	25 LONGITUDE	151°01'27.78"	151°01'06.56"	
	7 LENGTH	1000'	1000'	
	7 INNER WIDTH	500'	250'	
	7 OUTER WIDTH	700'	450'	
	25 AREA (ACRES)	13.770	8.035	
	25 LENGTH	1000'	1000'	
	25 INNER WIDTH	500'	250'	
	25 OUTER WIDTH	700'	450'	
	25 AREA (ACRES)	13.770	8.035	
OBJECT FREE AREA	5600' X 250'		2000' X 162'	
OBSTACLE FREE ZONE	5400' X 240'		2000' X 162'	
RUNWAY END STATIONING	7 20+00		65+75	
	25 70+00		80+75	
	7 95.66		100.25	
	25 112.50		100.00	

AIRPORT DATA	
ITEM	EXISTING
AIRPORT ELEVATION (NAVD 88)	112.75
AIRPORT REFERENCE POINT (A.R.P.)**	LATITUDE 60°28'30"
	LONGITUDE 151°02'18"
MEAN TEMPERATURE HOTTEST MONTH	65.8° (F)
TAXIWAY LIGHTING	MIRL
TAXIWAY MARKING	NON PRECISION
APRON AND TIEDOWN LIGHTING	NONE
AIRCRAFT DESIGN GROUP	
RUNWAY 7-25	II
RUNWAY 7U-25U	I
AIRCRAFT APPROACH CATEGORY	
RUNWAY 7-25	B
RUNWAY 7U-25U	A
NON DIRECTIONAL BEACON 4.7 MILES EAST	NDB/DME
AIR TRAFFIC CONTROL TOWER	GPS/RNAV/VOR
AIRPORT SURVEY MONUMENTATION ***	NONE

TAXIWAY DATA TABLE	
ITEM	EXISTING
TAXIWAY DIMENSIONS	
T/W A	1850' X 50'
T/W B	500' X 50'
T/W C	500' X 50'
T/W D	500' X 50'
APRON T/W	3100' X 50'
T/W P	3100' X 50'
T/W E	---
SAFETY AREA WIDTH	79'

FACILITIES		
NO.	FACILITY	ELEVATIONS
(1)	CITY AIRPORT MAINTENANCE	
(2)	CITY WELL HOUSE "E"	
(3)	KENAI RIVER CENTER	
(4)	HANGAR, US FISH AND WILDLIFE SERVICE (BUILDING TOP)	119.2'
(5)	HANGAR, IPPISCH (ANTENNA)	147.1'
(6)	HANGAR, CONTOUR CORP. (BUILDING TOP)	117.3'
(7)	HANGAR, TALON AIR (BUILDING TOP)	113.3'
(8)	OFFICE, CLEARWATER AIR (ANTENNA)	136.8'
(9)	HANGAR AND OFFICE, EOFF	123.0'
(10)	OFFICE, NATRON AIR (BUILDING TOP)	114.4'
(11)	HANGAR, MARC AIR (ANTENNA)	147.3'
(12)	HANGAR, SAMARITAN'S PURSE (BUILDING TOP)	126.0'
(13)	OPEN HANGAR, DAVIS AND BROWN (BUILDING TOP)	116.8'
(14)	HANGAR, BIAS (BUILDING TOP)	121.0'
(15)	WEATHER VANE (PRIVATE)	123.5'
(16)	HANGAR, GREEN	119.6'
(17)	BUILDING, MODELERS ASSOCIATION	110.5'
(18)	ANTENNA ON POLES	

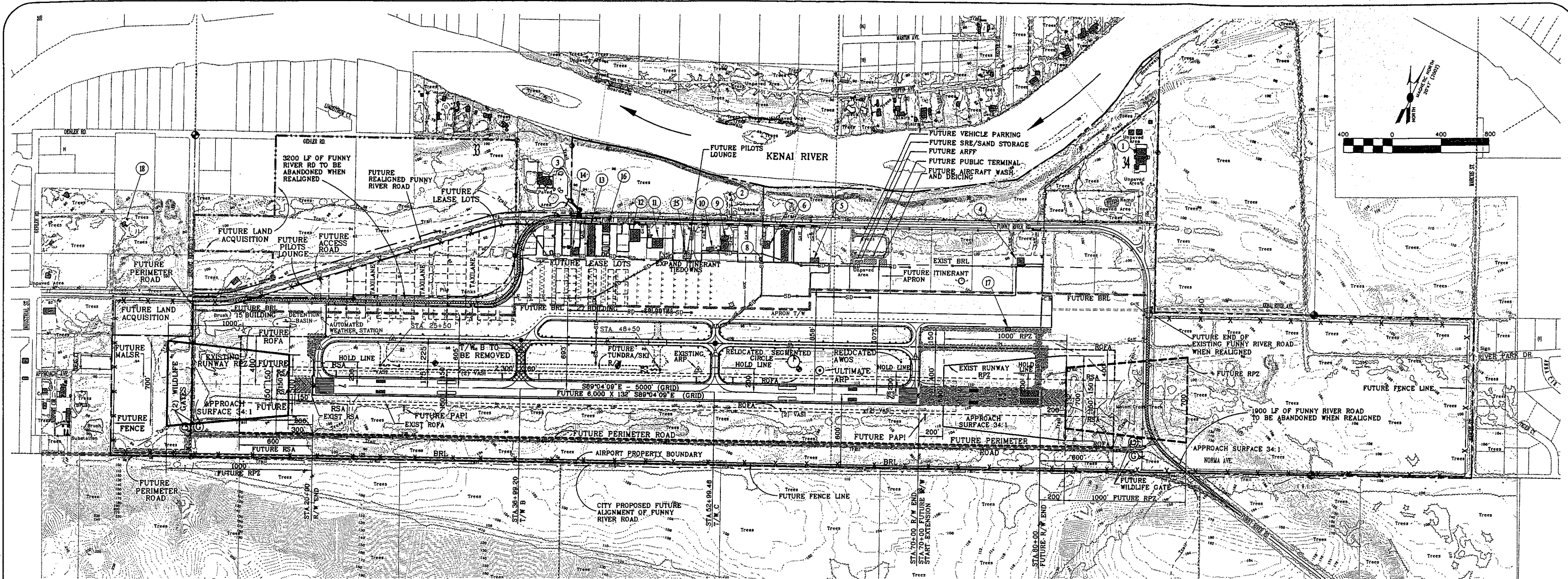
AIRPORT SURVEY MONUMENTATION						
ITEM	DESCRIPTION	STATION AT R/W 7-25	OFFSET FROM R/W 7-25	LATITUDE (NAD 83) **	LONGITUDE (NAD 83) **	ELEVATION (NAVD 88) ***
2 1/2" ALCAP	R/W 7-25 C/L MON	20+00	0.00	60°28'29.86"	151°03'07.54"	95.66
2 1/2" ALCAP	R/W 7-25 C/L MON	70+00	0.00	60°28'29.84"	151°01'27.78"	112.50
2" ALCAP	C/L REF. MON	29+99.26	200.03 LT	60°28'31.83"	151°02'47.60"	95.90
2" ALCAP	C/L REF. MON	44+99.14	200.03 LT	60°28'31.82"	151°02'17.68"	95.19
2" ALCAP	C/L REF. MON	59+99.06	200.04 LT	60°28'31.82"	151°01'47.75"	109.01
1 1/2" ALCAP	INT T/W A/B/P	36+99.20	399.99 LT	60°28'33.80"	151°02'33.63"	97.83
1 1/2" ALCAP	INT. T/W C/P	52+99.46	400.00 LT	60°28'33.79"	151°02'01.70"	100.94

NO.	REVISIONS	DATE

FAA AIRSPACE CASE NO.: 3-02-0274-0401
 FAA APPROVAL LETTER DATED: _____
 BY: _____
 FAA ALASKAN REGION, AIRPORTS DIVISION

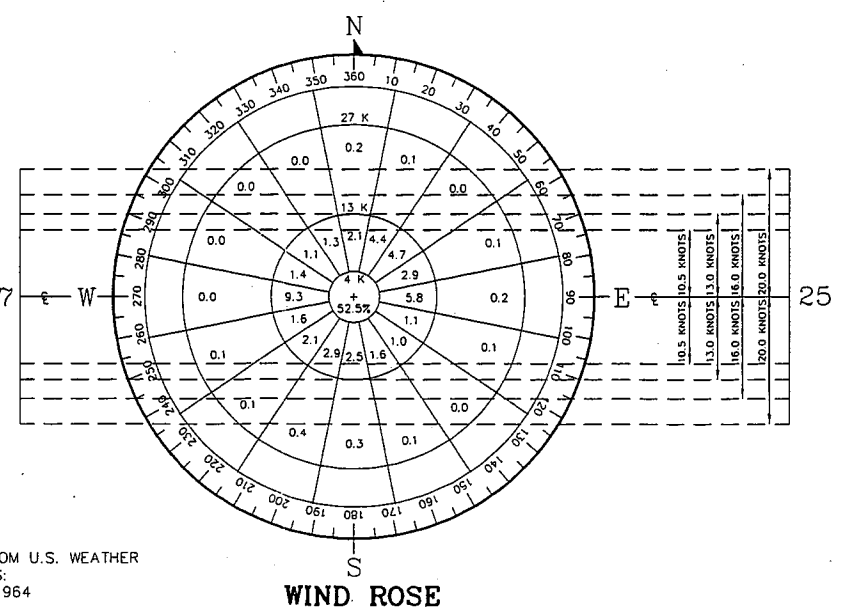
WINCE-CORTHELL-BRYSON
 ARIES CONSULTANTS LTD.
 DRAWN BY: VICKI COLEMAN DWG: 2001014EXISTPAC_REP
 CHECKED BY: PHIL BRYSON DATE: Feb 12, 2004

SOLDOTNA MUNICIPAL AIRPORT
 EXISTING AIRPORT FACILITIES
 SOLDOTNA, ALASKA



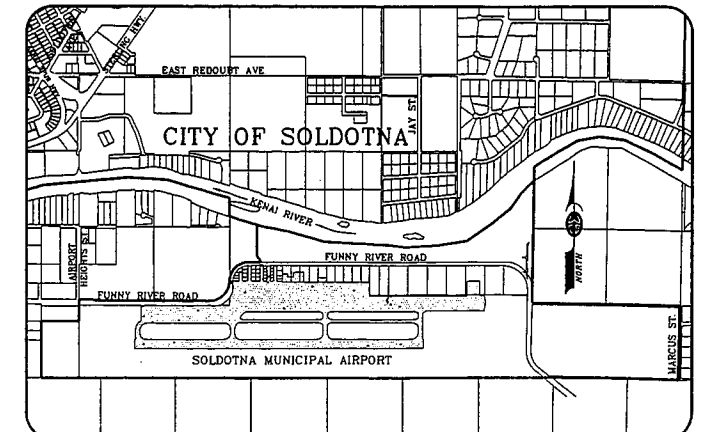
LEGEND	
---	EXISTING
- - - - -	FUTURE
---	AIRPORT PROPERTY LINE
---	PROPERTY LINE
⊙	BOUNDARY MONUMENTS
⊙	FOUND 1 1/2" CAP
⊙	FOUND 2" AL CAP
---	RUNWAY SAFETY AREA (RSA)
---	RUNWAY OBJECT FREE AREA (ROFA)
---	BUILDING RESTRICTION LINE (BRL)
---	SECURITY FENCING
⊙	AIRPORT REFERENCE POINT (ARP)
⊙	SEGMENTED CIRCLE
⊙	COMPASS ROSE
---	TAXIWAY IDENTIFIER
---	ROADWAYS
---	PAVEMENT
---	GRASS TAXIWAYS
---	TIEDOWNS
---	BUILDINGS
---	RUNWAY, APRON, TAXIWAY LIGHTING
---	TREES & BRUSH
---	WINDSOCK
---	LIGHTPOLE
---	POWER POLE
---	SURFACE STORM FLOW
---	STORM DRAIN
---	UNDERGROUND ELECTRIC
---	WATER
---	RUNWAY END IDENTIFIER LIGHTS
---	VISUAL APPROACH SLOPE INDICATOR
---	PRECISION APPROACH PATH INDICATOR
---	FENCE GATE
---	FUEL ISLAND
---	SECTION CORNERS
---	RUNWAY PROTECTION ZONE

FACILITIES		
NO.	FACILITY	ELEVATIONS
1	CITY AIRPORT MAINTENANCE	
2	CITY WELL HOUSE "E"	
3	KENAI RIVER CENTER	
4	HANGAR, US FISH AND WILDLIFE SERVICE (BUILDING TOP)	119.2'
5	HANGAR, IPPISCH (ANTENNA)	147.1'
6	HANGAR, CONTOUR CORP. (BUILDING TOP)	117.3'
7	HANGAR, TALON AIR (BUILDING TOP)	113.3'
8	OFFICE, CLEARWATER AIR (ANTENNA)	136.8'
9	HANGAR AND OFFICE, EOFF	123.0'
10	OFFICE, NATRON AIR (BUILDING TOP)	114.4'
11	HANGAR, MARC AIR (ANTENNA)	147.3'
12	HANGAR, SAMARITAN'S PURSE (BUILDING TOP)	126.0'
13	OPEN HANGAR, DAVIS AND BROWN (BUILDING TOP)	116.8'
14	HANGAR, BIAS (BUILDING TOP)	121.0'
15	WEATHER VANE (PRIVATE)	123.5'
16	HANGAR, GREEN	119.6'
17	BUILDING, MODELERS ASSOCIATION	110.5'
18	ANTENNA ON POLES	



WIND COVERAGE
 WIND INFORMATION TAKEN FROM U.S. WEATHER BUREAU MONTHLY SUMMARIES: MARCH, 1962 - DECEMBER, 1964

10.5 KNOT CROSSWIND COVERAGE = 94.9%
 13.0 KNOT CROSSWIND COVERAGE = 98.9%
 16.0 KNOT CROSSWIND COVERAGE = 99.2%
 20.0 KNOT CROSSWIND COVERAGE = 99.5%



VICINITY MAP
 NOT TO SCALE

NO.	REVISIONS	DATE

FAA AIRSPACE CASE NO.: 3-02-0274-0401
 FAA APPROVAL LETTER DATED: _____
 BY: _____
 FAA ALASKAN REGION, AIRPORTS DIVISION

WINCE-CORTHELL-BRYSON
ARIES CONSULTANTS LTD.

DRAWN BY: VICKI COLEMAN DRAWING: SOLALAYOUT
 CHECKED BY: CASEY MADDEN DATE: Feb 12, 2004

SOLDOTNA MUNICIPAL AIRPORT
AIRPORT LAYOUT DRAWING
 SOLDOTNA, ALASKA

SHEET 2 OF 9