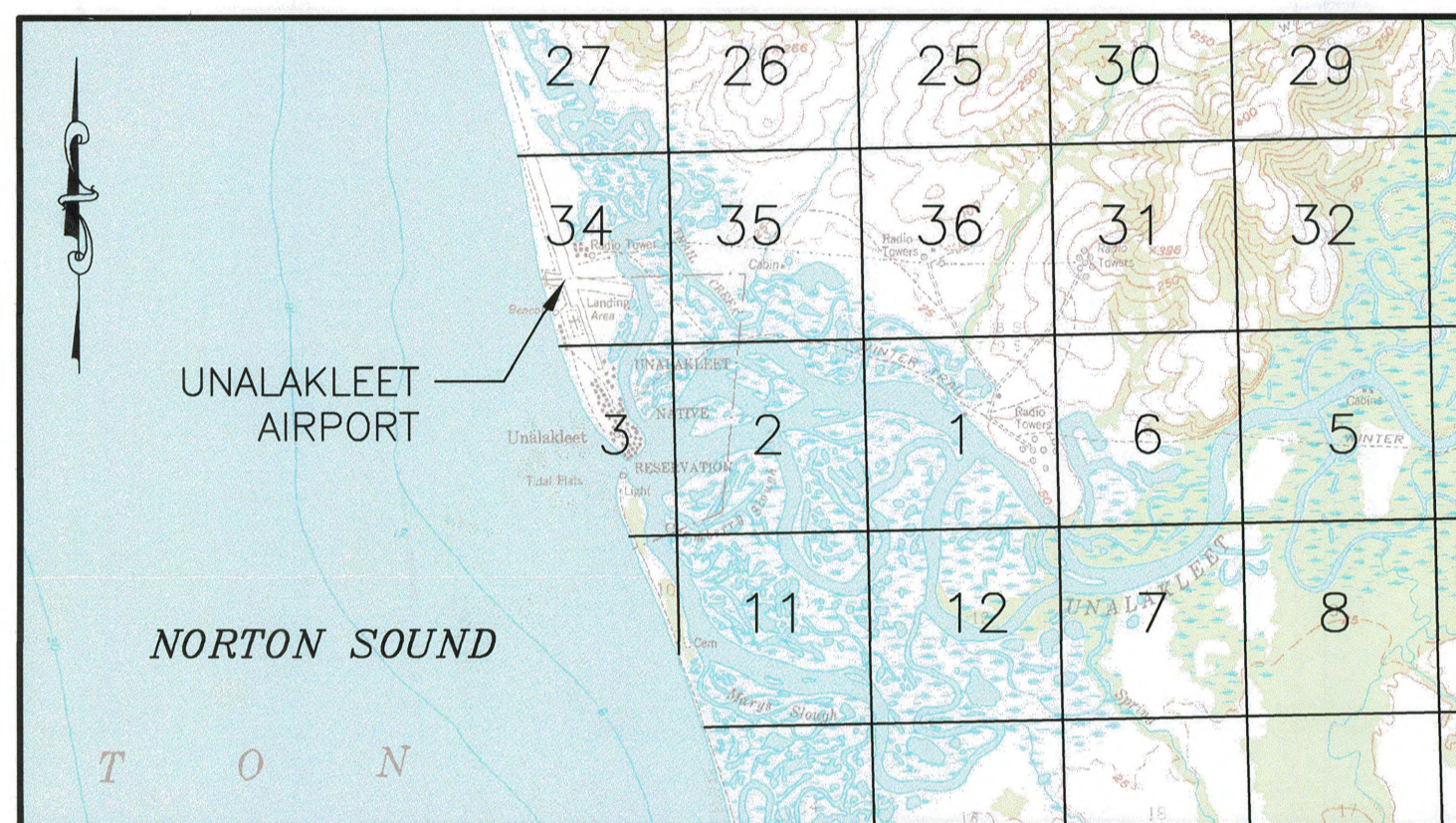
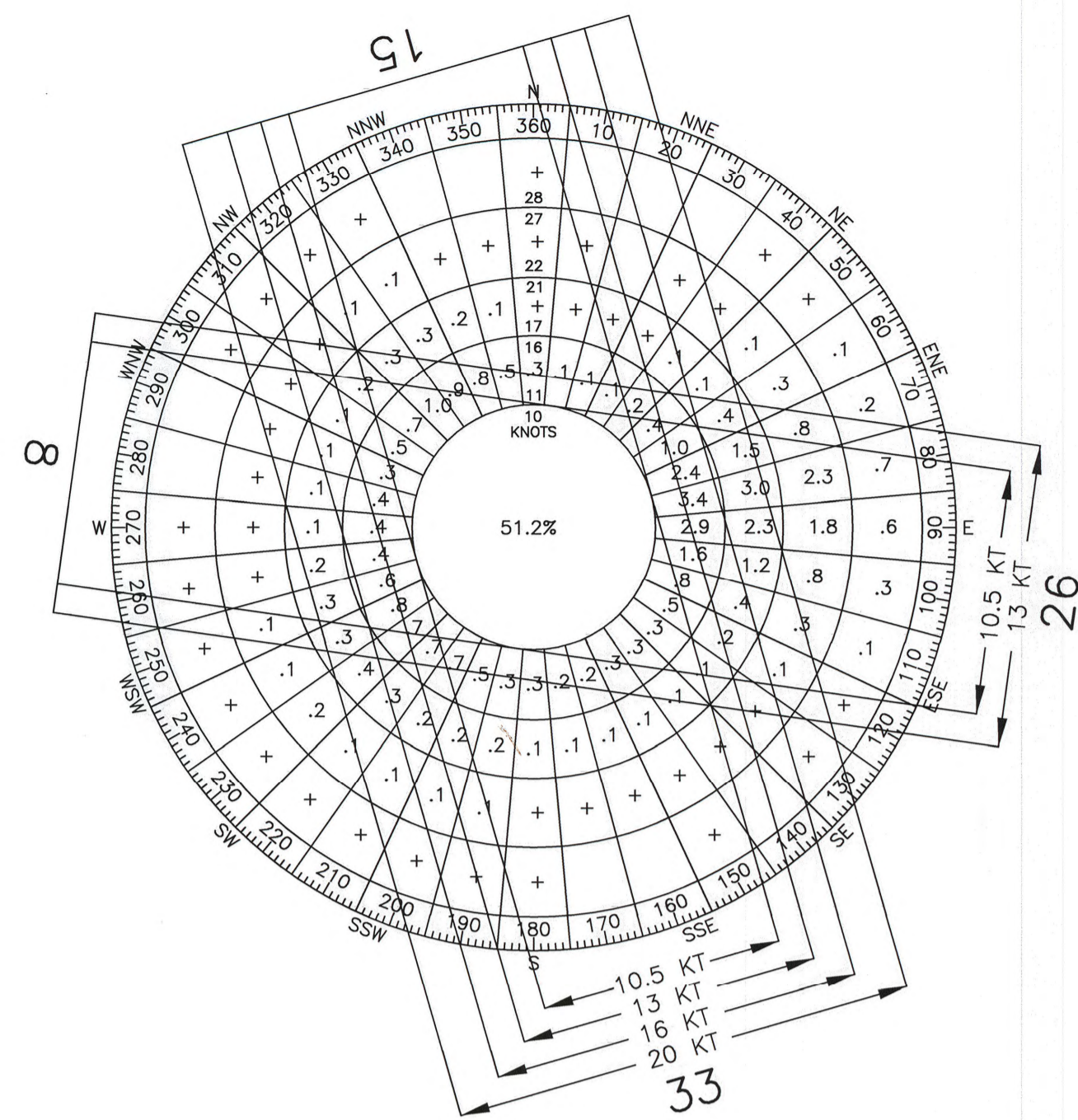


LOCATION MAP
NO SCALE



VICINITY MAP
T18S, R11W, SEC. 3
T19S, R11W, SEC. 27, 34
KATEEL RIVER MERIDIAN
USGS QUAD, UNALAKLEET (D-4), ALASKA



WIND DATA				
RUNWAY	10.5 KT	13 KT	16 KT	20 KT
RUNWAY 15-33	62.90 %	71.00 %	80.40 %	89.20 %
RUNWAY 8-26	87.40 %	92.90 %	-	-
COMBINED	-	97.30 %	-	-

SOURCE: UNIV. OF ALASKA STATE CLIMATE CENTER
STATION NAME: UNALAKLEET
PERIOD: 1965-1987

RUNWAY DATA				
ITEM	RW 8/26		RW 15/33	
	EXISTING	ULTIMATE	EXISTING	ULTIMATE
F.A.R. PART 77 APPROACH CATEGORY	VIS	SAME	NPI	SAME
F.A.R. PART 77 APPROACH SURFACE	20:1/20:1	SAME/SAME	34:1/34:1	SAME/SAME
APPROACH SLOPE/OCS*	20:1/20:1	SAME/SAME	20:1/20:1	SAME/SAME
DEPARTURE SLOPE	-	-	40:1/40:1	SAME/SAME
VISIBILITY MINIMUM	-	-	≥1 MILE/≥1 MILE	SAME/SAME
RUNWAY SURFACE	ASPHALT, GROOVED		ASPHALT, GROOVED	
PAVEMENT STRENGTH	175,000 LBS (DW)	SAME	175,000 LBS (DW)	SAME
RUNWAY DESIGN CODE (RDC)	B-II-VIS	B-II-VIS	B-III-5000	B-III-5000
RUNWAY REFERENCE CODE (RRC)	B/II/VIS	B/II/VIS	B/III/5000	B/III/5000
RUNWAY DIMENSIONS	75' X 1,900'		150' X 5,900'	
MEAN GEODETIC BEARING	S81°43'49"E		N15°51'34"W	
EFFECTIVE GRADE	0.23%			
RUNWAY SAFETY AREA (RSA) DIMENSIONS	150' X 2,440'	150' X 2,455'	300' X 7,018'	300' X 7,100'
LENGTH BEYOND RUNWAY ENDS	240'/300'	255'/SAME	595'/523'	600'/600'
RUNWAY PROTECTION ZONE (RPZ) DIMENSIONS	RW 8 = 1,000' X 500' X 700' RW 26 = 1,000' X 500' X 700'		RW 15 = 1,700' X 1,000' X 1,510' RW 33 = 1,000' X 500' X 700'	
RUNWAY OBJECT FREE AREA (ROFA) DIMENSIONS	500' X 2,500'		800' X 7,100'	
LENGTH BEYOND RUNWAY ENDS	300'/300'	SAME/SAME	600'/600'	SAME/SAME
RUNWAY OBSTACLE FREE ZONE (OFZ) DIMENSIONS	400' X 2,300'		400' X 6,300'	
RUNWAY LIGHTING TYPE	MIRL		HIRL	
RUNWAY MARKING TYPE	BASIC		PRECISION	
RUNWAY VISUAL APPROACH AIDS	NONE		MALSR, REIL, VASI	
TOUCHDOWN ELEVATION NAVD88	24.3'/24.3'	SAME/SAME	27.3'/25.0'	SAME/SAME

*FROM FAA AC 150/5300-13A

NON STANDARD CONDITIONS				
DESCRIPTION	STANDARD	EXISTING	ULTIMATE	DISPOSITION
OBJECT FREE AREA	CLEAR	PARKED AIRCRAFT AT TIEDOWN AREA OF ORIGINAL GA APRON	CLEAR	MOVE TO NEW GA APRON
R/W 33 SAFETY AREA LENGTH	600'	523'	600'	RELOCATE LOCALIZER & FENCE
R/W 15 SAFETY AREA LENGTH	300'	240'	255'	FUTURE UPGRADE
R/W 33 SAFETY AREA WIDTH	300'	THE RW 33 SAFETY AREA WIDTH TAPERS FROM 300' TO 245' FROM STA 179+58 TO 185+95	300'	FUTURE UPGRADE
R/W 8 SAFETY AREA WIDTH	150'	THE RW 8 SAFETY AREA WIDTH TAPERS FROM 150' TO 95' FROM STA 20+95 TO STA 20+65	150'	FUTURE UPGRADE

AIRPORT SURVEY CONTROL			
MONUMENT	LATITUDE	LONGITUDE	ELEVATION
UNK A (PACS)	N63° 53' 37.56"	W160° 48' 05.24"	21.7'
UNK B (SACS)	N63° 53' 07.87"	W160° 47' 48.33"	20.1'
UNK C (SACS)	N63° 54' 02.07"	W160° 48' 30.09"	25.4'

AIRPORT DATA		
ITEM	EXISTING	ULTIMATE
ICAO IDENTIFIER	PAUN	
NATIONAL AIRPORT IDENTIFIER	UNK	
FAA SITE NUMBER	50799.*A	
NPIAS ROLE	P-N	SAME
AIRPORT REFERENCE CODE	B-III	SAME
AIRPORT ELEVATION NAVD88	27.3'	SAME
AIRPORT AND TERMINAL NAVIGATION AIDS	VOR, DME, LOC, NDB, BEACON	
TAXIWAY LIGHTING/MARKING	MITL	
MEAN MAX. TEMPERATURE, HOTTEST MONTH *	75° JULY	
MAGNETIC DECLINATION, YEAR, RATE OF CHANGE **	14°53'59"E, JAN 2010, -16.1'/YEAR	
OBSTRUCTION SURVEY SOURCE & TYPE	R&M CONSULTANTS, INC. 2010/ VERTICALLY GUIDED AIRPORT AIRSPACE ANALYSIS SURVEY	

DATA FROM (*) THE WESTERN REGIONAL CLIMATE CENTER (**) NATIONAL GEOPHYSICAL DATA CENTER

LEGEND		
ITEM	EXISTING	ULTIMATE
AIRPORT REFERENCE POINT		
ANTENNA/TOWER		
BUILDING		
BUILDING RESTRICTION LINE		
FENCE		
MALSR		
PROPERTY LINE		
REIL		
ROADWAYS		
ROTATING BEACON		
SURVEY MONUMENT		
THRESHOLD LIGHTS		
TOPOGRAPHIC CONTOURS		
TREELINE		
VASI		
WINDCONE		
WINDCONE WITH SEGMENTED CIRCLE		
OPEN WATER		
RUNWAY/TAXIWAY CENTERLINE		
TREE (LARGE SINGLE)		
SHORELINE		
OVERHEAD POWERLINE		
AVIGATION AND HAZARD EASEMENT		

SHEET INDEX	
TITLE	NO.
TITLE SHEET AND DATA	1
AIRPORT LAYOUT (EXISTING AND ULTIMATE)	2
RUNWAY PROFILES (EXISTING)	3
TERMINAL PLAN (EXISTING AND ULTIMATE)	4
INNER PORTION OF THE APPROACH SURFACE (RW 15-33)	5
INNER PORTION OF THE APPROACH SURFACE (RW 8-26)	6
AIRPORT AIRSPACE PLAN	7
AIRPORT AIRSPACE PROFILES	8

GEOGRAPHIC COORDINATES						
ITEM	EXISTING LATITUDE*	EXISTING LONGITUDE*	EXISTING ELEVATION	ULTIMATE LATITUDE	ULTIMATE LONGITUDE	ULTIMATE ELEVATION
AIRPORT REFERENCE POINT	N63° 53' 18.60"	W160° 47' 56.81"	-	SAME	SAME	-
THRESHOLD 15	N63° 53' 52.83"	W160° 48' 21.69"	25.7'	SAME	SAME	SAME
THRESHOLD 33	N63° 52' 56.96"	W160° 47' 45.67"	24.7'	SAME	SAME	SAME
THRESHOLD 8	N63° 53' 00.41"	W160° 47' 56.47"	24.1'	SAME	SAME	SAME
THRESHOLD 26	N63° 52' 57.72"	W160° 47' 14.48"	19.3'	SAME	SAME	SAME

*NAD83

Plotted: 9/17/2015 9:59 AM by Matt Mojorcos
Z:\project\1605.07_DOT_N_Aeronautical_2009_Unalakleet_Airport\Civil\ACAD\1605_07-TITLE SHEET AND DATA.dwg

DESIGN	PRB
DRAWN	PMH
CHECKED	EJG

BY	DATE	REVISIONS
PRB	5/2013	UPDATED TO MATCH AERONAUTICAL SURVEY ELEVATIONS

STATE OF ALASKA
DEPARTMENT OF TRANSPORTATION AND PUBLIC FACILITIES
NORTHERN REGION- DESIGN AND CONSTRUCTION- AVIATION
APPROVED

ALBERT M. L. BECK, P.E. DATE 10/12/15
AIRPORT DESIGN GROUP CHIEF

AIRPORT LAYOUT PLAN APPROVED
BY LETTER DATED: _____
AS-BUILT 10/2015

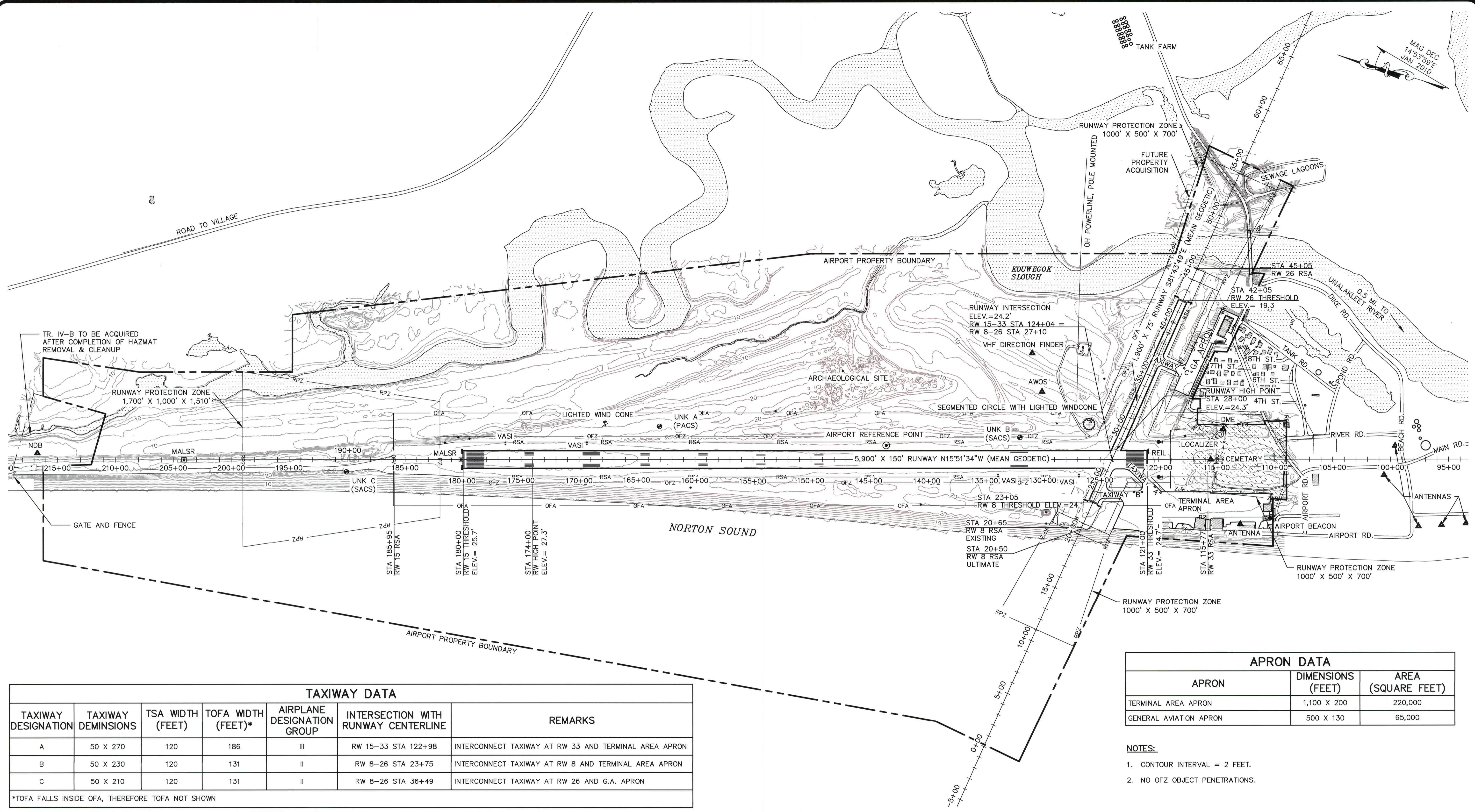
AIRPORTS DIVISION
ALASKAN REGION AAL-604
AIRSPACE: 2008AAL-25NRA

PLANS DEVELOPED BY: R&M CONSULTANTS, INC.
THIS ALP SUPERSEDES ALP SIGNED: 1/17/2013

UNALAKLEET AIRPORT
AIRPORT LAYOUT PLAN
TITLE SHEET AND DATA

SHEET
1 OF 8

Plotted 9/17/2015 10:00 AM by Matt Majoros
Z:\project\1605.07 DOT_N Aeronautical 2009 Unalakleet Airport\Civil\ACAD\1605.07-AIRPORT LAYOUT (EXISTING).dwg



MAG DEC
14°53'59"E
JAN 2010

TAXIWAY DATA						
TAXIWAY DESIGNATION	TAXIWAY DIMENSIONS	TSA WIDTH (FEET)	TOFA WIDTH (FEET)*	AIRPLANE DESIGNATION GROUP	INTERSECTION WITH RUNWAY CENTERLINE	REMARKS
A	50 X 270	120	186	III	RW 15-33 STA 122+98	INTERCONNECT TAXIWAY AT RW 33 AND TERMINAL AREA APRON
B	50 X 230	120	131	II	RW 8-26 STA 23+75	INTERCONNECT TAXIWAY AT RW 8 AND TERMINAL AREA APRON
C	50 X 210	120	131	II	RW 8-26 STA 36+49	INTERCONNECT TAXIWAY AT RW 26 AND G.A. APRON

*TOFA FALLS INSIDE OFA, THEREFORE TOFA NOT SHOWN

APRON DATA		
APRON	DIMENSIONS (FEET)	AREA (SQUARE FEET)
TERMINAL AREA APRON	1,100 X 200	220,000
GENERAL AVIATION APRON	500 X 130	65,000

- NOTES:
1. CONTOUR INTERVAL = 2 FEET.
 2. NO OFZ OBJECT PENETRATIONS.

DESIGN PRB
DRAWN PMH
CHECKED EJC

BY	DATE	REVISIONS
PRB	5/2013	UPDATED TO MATCH AERONAUTICAL SURVEY ELEVATIONS

STATE OF ALASKA
DEPARTMENT OF TRANSPORTATION AND PUBLIC FACILITIES
NORTHERN REGION- DESIGN AND CONSTRUCTION- AVIATION
APPROVED
Albert M. L. Beck DATE 10/12/15
ALBERT M. L. BECK, P.E. AIRPORT DESIGN GROUP CHIEF

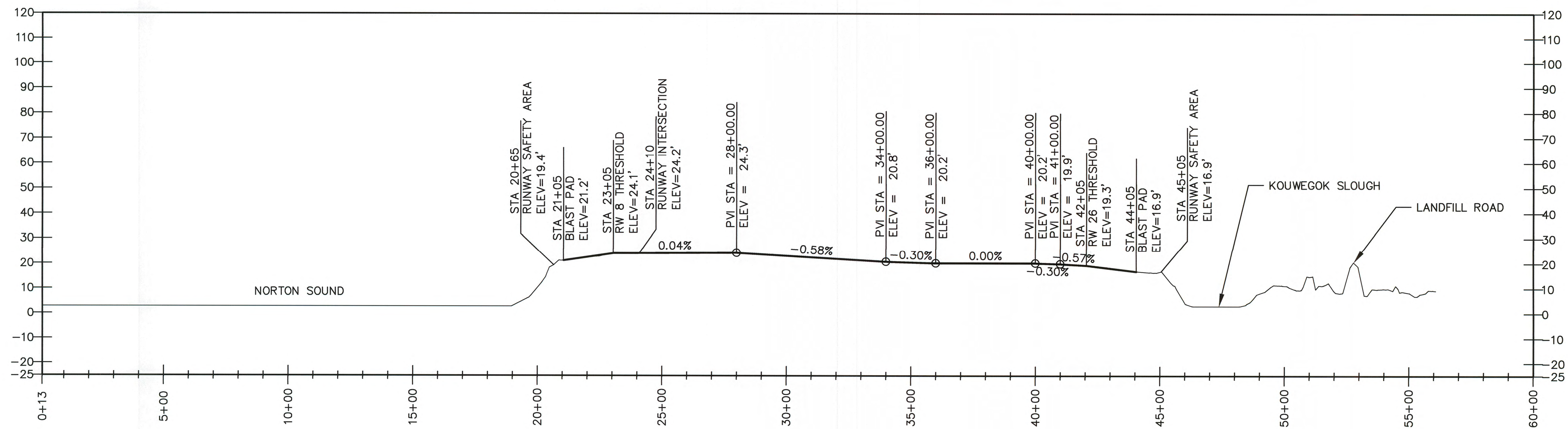
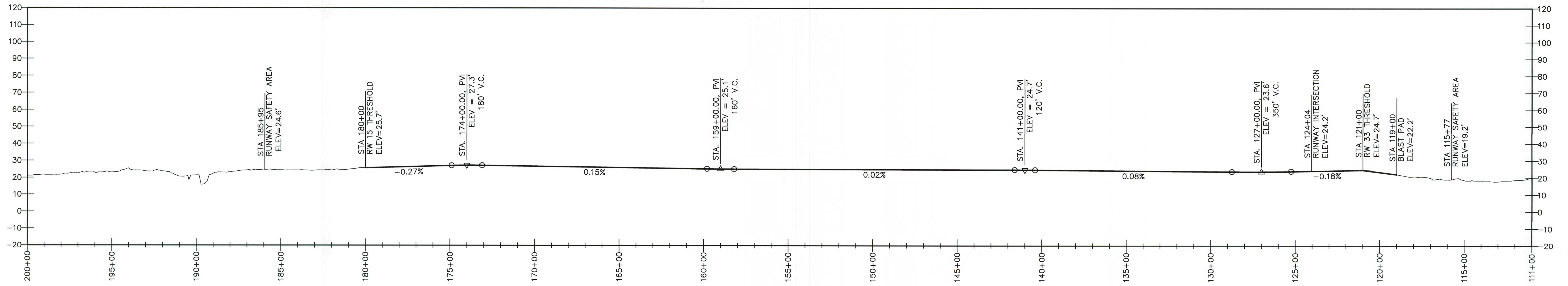
AIRPORT LAYOUT PLAN APPROVED
BY LETTER DATED: _____
AS-BUILT
AIRPORTS DIVISION
ALASKAN REGION AAL-601
AIRSPACE: 2008AAL-25NRA

PLANS DEVELOPED BY: **R&M CONSULTANTS, INC.**
THIS ALP SUPERSEDES ALP SIGNED: 1/17/2013
400' 200' 0 400' 800' 1200'

UNALAKLEET AIRPORT
AIRPORT LAYOUT PLAN
AIRPORT LAYOUT (EXISTING AND ULTIMATE)

SHEET
2 OF
8

Plotted 9/17/2015 10:01 AM by Matt Mejoras
 Z:\project\1605.07 DOT_N Aeronautical 2009 Unalakleet Airport\Civil\ACAD\1605.07-RUNWAY PROFILES.dwg



DESIGN	PRB
DRAWN	PMH
CHECKED	EJG

BY	DATE	REVISIONS
PRB	5/2013	UPDATED TO MATCH AERONAUTICAL SURVEY ELEVATIONS

STATE OF ALASKA
 DEPARTMENT OF TRANSPORTATION AND PUBLIC FACILITIES
 NORTHERN REGION- DESIGN AND CONSTRUCTION- AVIATION
 APPROVED
Albert M. Beck DATE 10/12/15
 ALBERT M. L. BECK, P.E. AIRPORT DESIGN GROUP CHIEF

AIRPORT LAYOUT PLAN- APPROVED
 BY LETTER DATED: AS-BUILT
 AIRPORTS DIVISION
 ALASKAN REGION AAL-601
 AIRSPACE: 2008AAL-25NRA

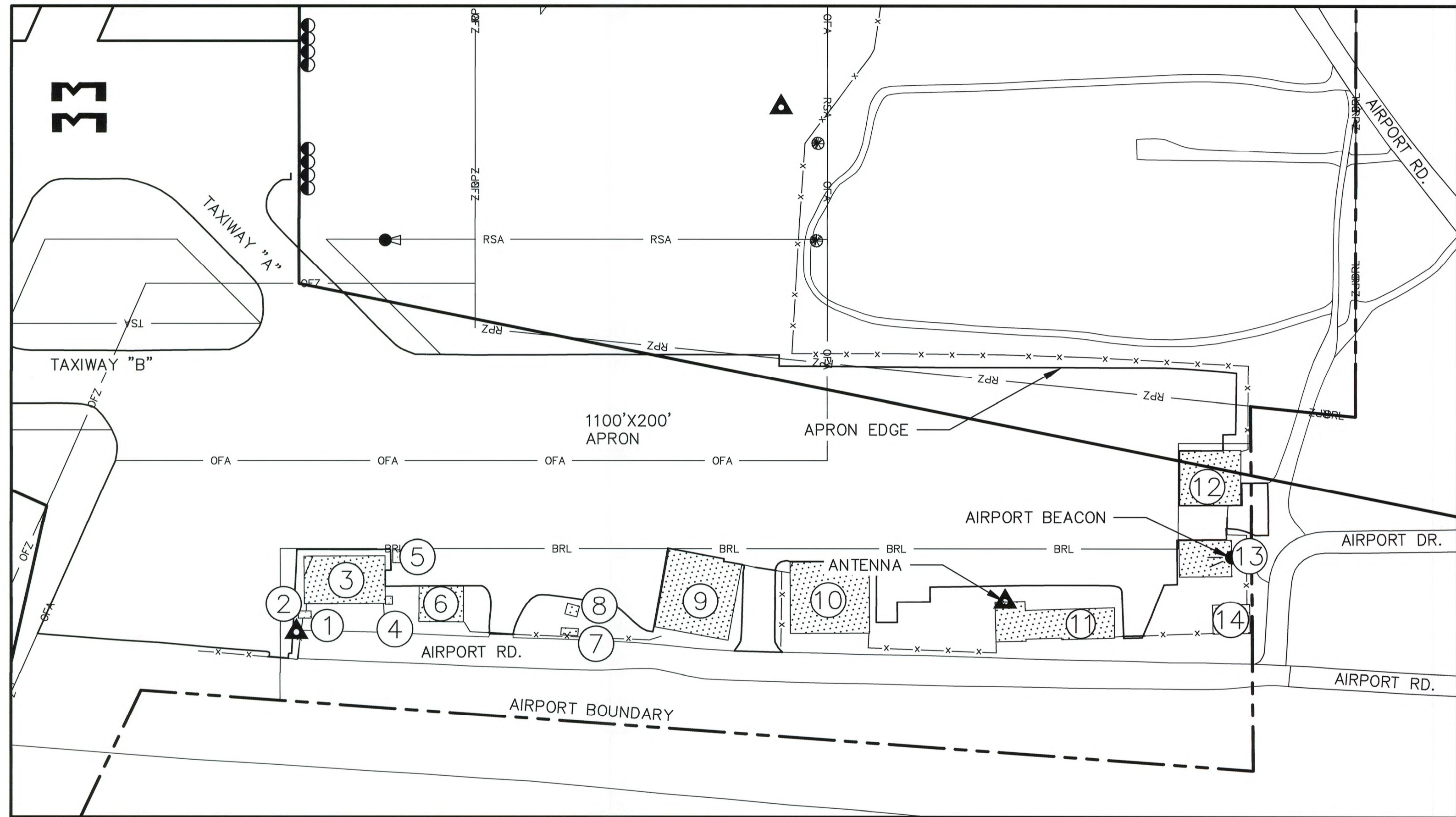
PLANS DEVELOPED BY: R&M CONSULTANTS, INC.
 THIS ALP SUPERSEDES ALP SIGNED: 1/17/2013
 300' 0' 300' 600' 900'
 HORIZONTAL TO VERTICAL RATIO = 10:1

**UNALAKLEET AIRPORT
 AIRPORT LAYOUT PLAN
 RUNWAY PROFILES
 (EXISTING)**

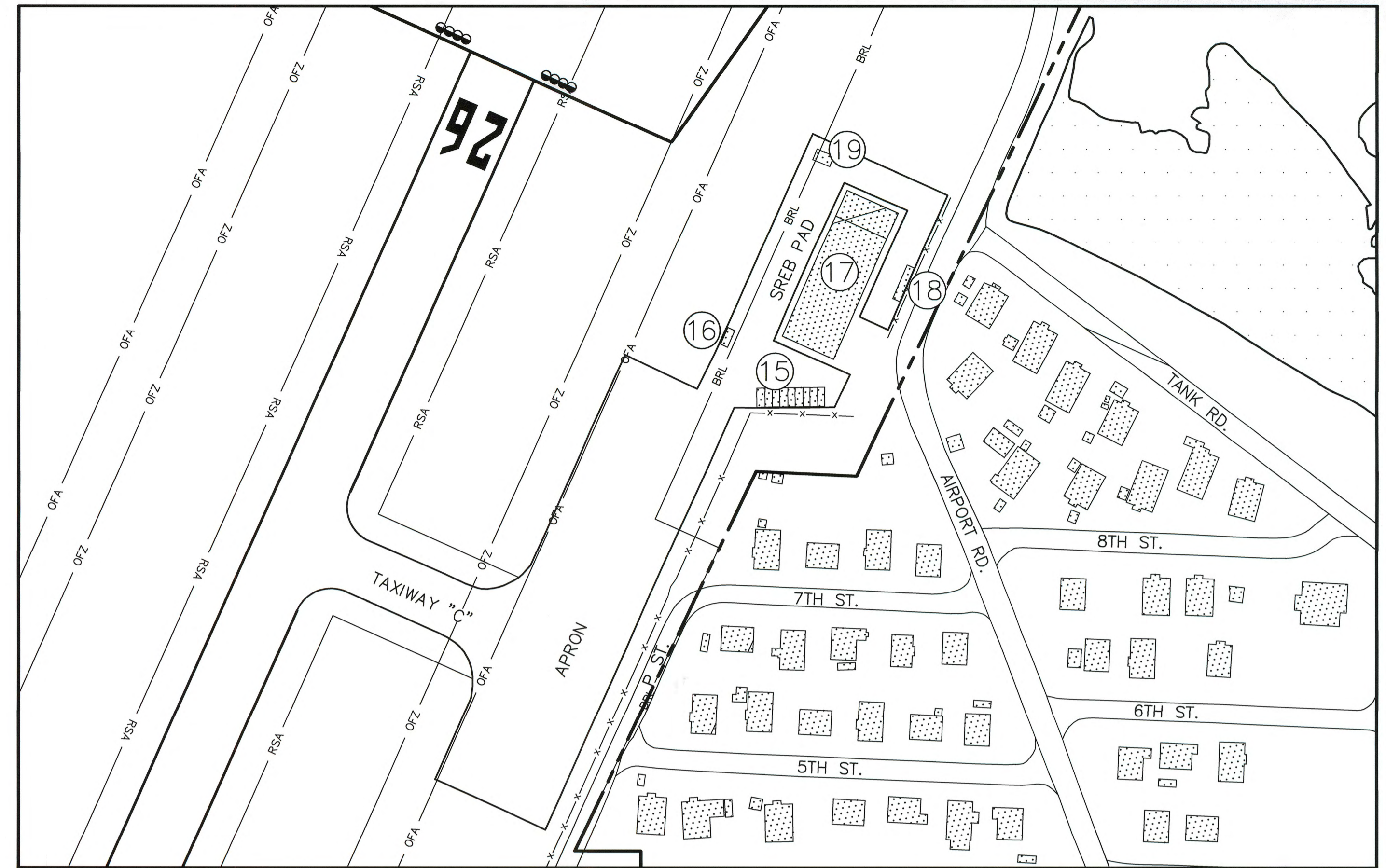
SHEET 3 OF 8

Plotted 9/17/2015 10:01 AM by Matt Majoras
Z:\project\1605.07 DOT_N Aeronautical 2009 Unalakleet Airport\Civil\CAD\1605.07-TERMINAL PLAN (ULTIMATE).dwg

MAG DEC
14°33'59"E
JUL 2010



TERMINAL AREA APRON



GENERAL AVIATION APRON

BUILDING DATA					
ID#	DESCRIPTION	STATION/ OFFSET	TOP ELEVATION	OBSTRUCTION MARKING	PROPOSED DISPOSITION
1	ANTENNA	120+99 / 587' L	46.7	NO	TO REMAIN
2	WEST COAST AVIATION SERVICES BLDG	120+96 / 571' L	28.1	NO	TO REMAIN
3	JOINT USE TERMINAL	120+70 / 521' L	48.0	NO	TO REMAIN
4	WEST COAST AVIATION SERVICES BLDG	120+02 / 554' L	29.9	NO	TO REMAIN
5	WEST COAST AVIATION SERVICES BLDG	119+88 / 511' L	30.2	NO	TO REMAIN
6	WEST COAST CONSTRUCTION	119+13 / 563' L	44.4	NO	TO REMAIN
7	BERING STRAITS DEVELOPMENT CO.	117+82 / 591' L	29.7	NO	TO BE REMOVED
8	PUMP HOUSE	117+81 / 566' L	29.2	NO	TO REMAIN
9	RYAN AIR HANGAR	116+01 / 546' L	56.3	NO	TO REMAIN
10	HANGAR	115+32 / 589' L	42.4	NO	TO REMAIN
11	DOT&PF MAINTENANCE SHOP	112+33 / 585' L	46.9	NO	TO REMAIN
12	HAGELAND AVIATION	110+50 / 425' L	64.4	NO	TO REMAIN
13	SREB, OLD	110+40 / 508' L	52.0	NO	TO REMAIN
14	WAREHOUSE	110+62 / 580' L	37.1	NO	TO REMAIN
15	CONNEXES	40+01 / 392' R	26.8	NO	TO REMAIN
16	SREB PAD BLDG	40+28 / 337' R	26.3	NO	TO REMAIN
17	SREB, NEW	41+35 / 425' R	44.8	NO	TO REMAIN
18	SREB PAD BLDG	41+62 / 491' R	29.7	NO	TO REMAIN
19	SREB PAD BLDG	42+62 / 347' R	27.3	NO	TO REMAIN

DESIGN PRB	BY PRB	DATE 5/2013	REVISIONS UPDATED TO MATCH AERONAUTICAL SURVEY ELEVATIONS
DRAWN PMH			
CHECKED EJG			

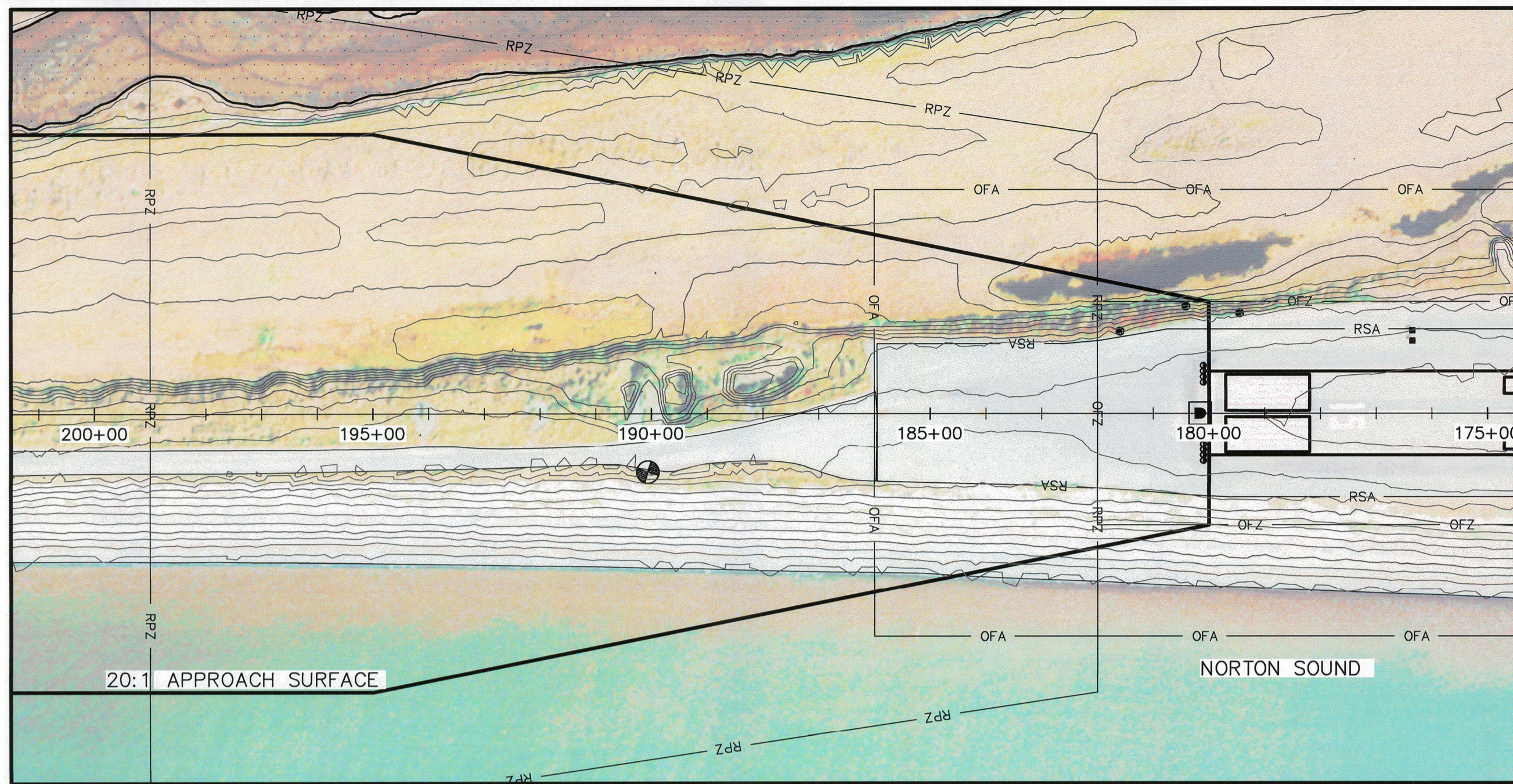
STATE OF ALASKA
DEPARTMENT OF TRANSPORTATION AND PUBLIC FACILITIES
NORTHERN REGION- DESIGN AND CONSTRUCTION- AVIATION
APPROVED
Albert M. Beck DATE 10/2/15
ALBERT M. L. BECK, P.E. AIRPORT DESIGN GROUP CHIEF

AIRPORT LAYOUT PLAN APPROVED
BY LETTER DATED: _____
AS-BUILT
AIRPORTS DIVISION
ALASKAN REGION AAL-601
AIRSPACE: 2008AAL-25NRA

PLANS DEVELOPED BY: **R&M CONSULTANTS, INC.**
THIS ALP SUPERSEDES ALP SIGNED: 1/17/2013
100' 0 100' 200' 300'

**UNALAKLEET AIRPORT
AIRPORT LAYOUT PLAN
TERMINAL PLAN (EXISTING AND ULTIMATE)**

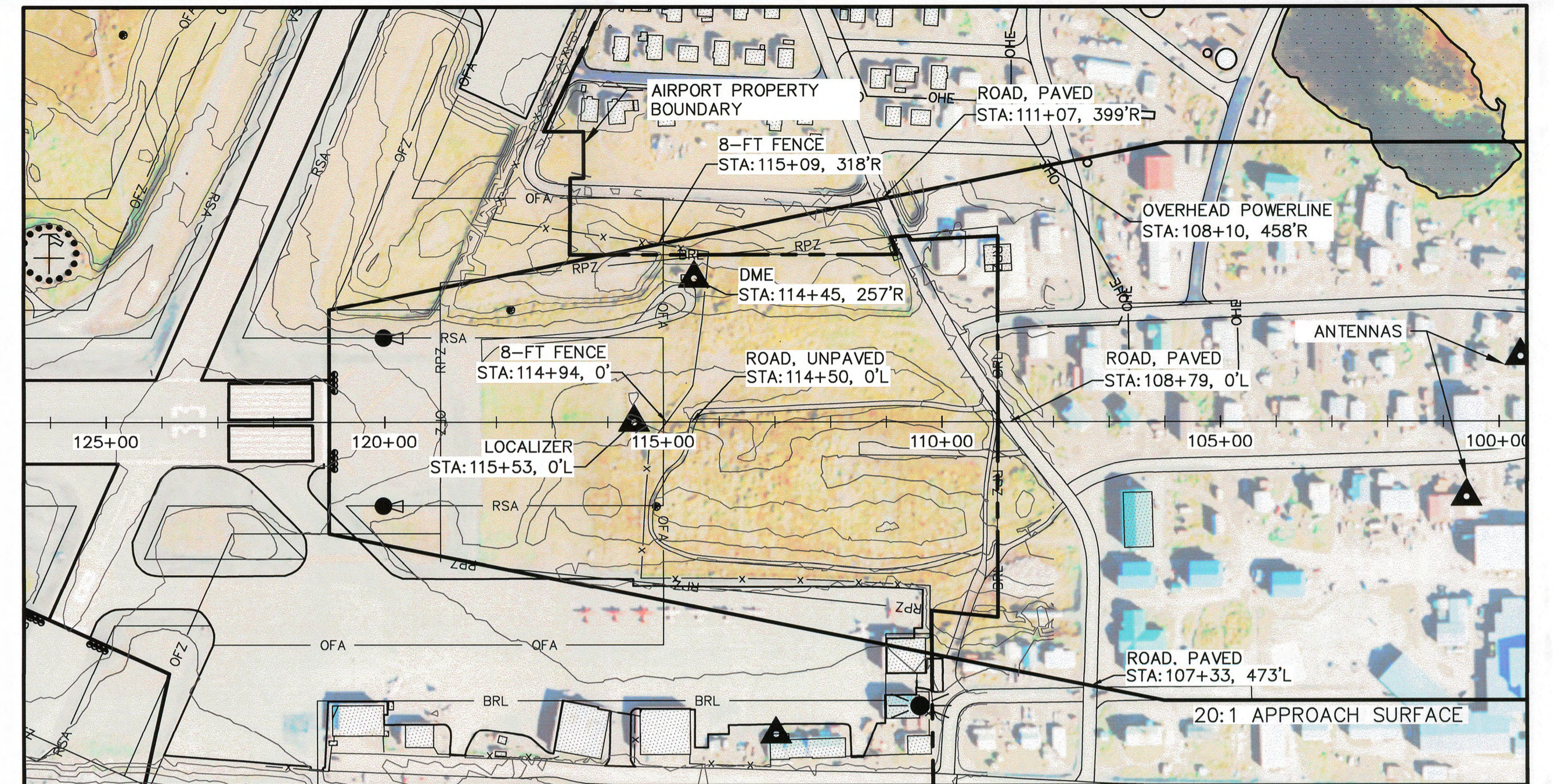
SHEET
4 OF
8



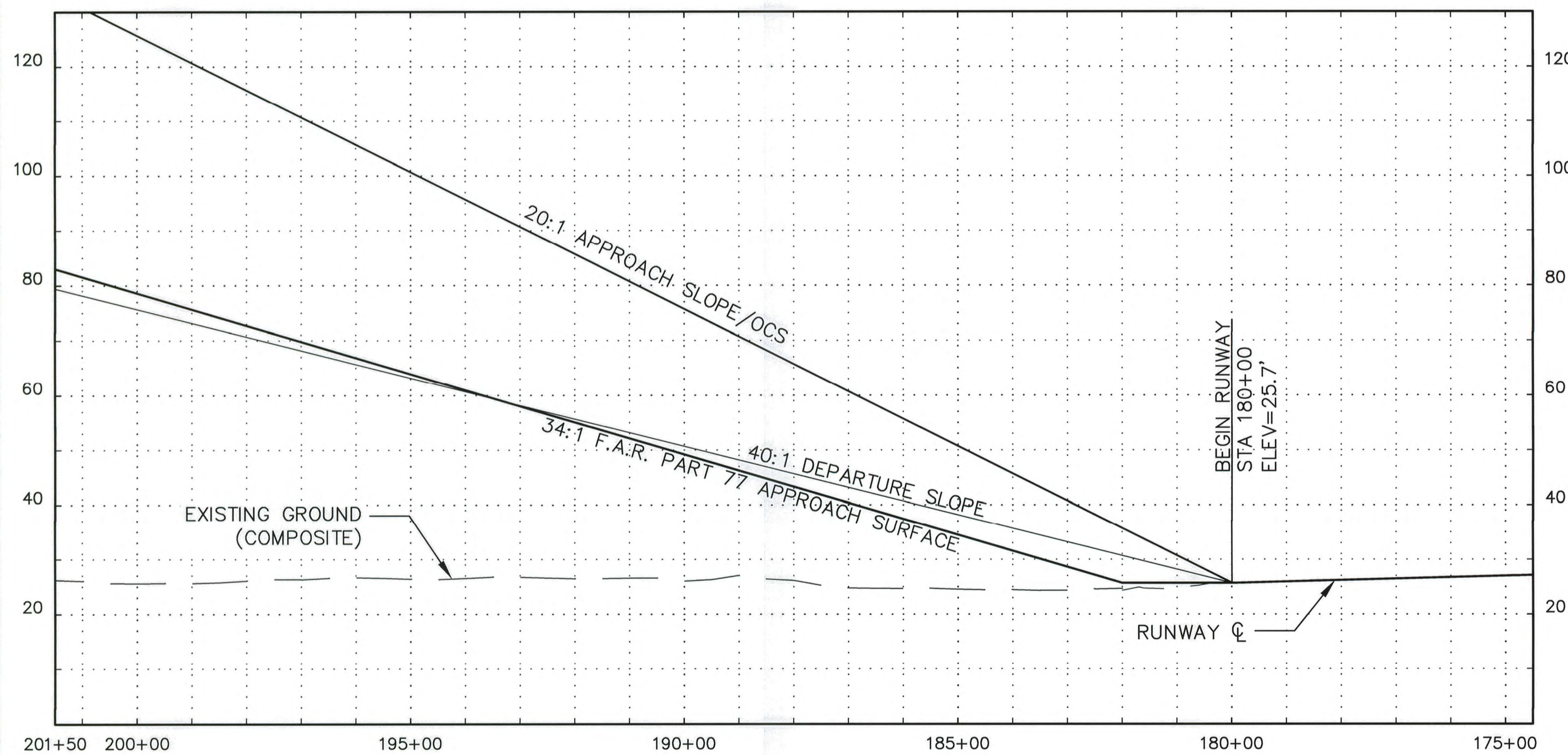
RW 15 INNER APPROACH PLAN

MAG DEC 145°35'59"E
JAN 2010

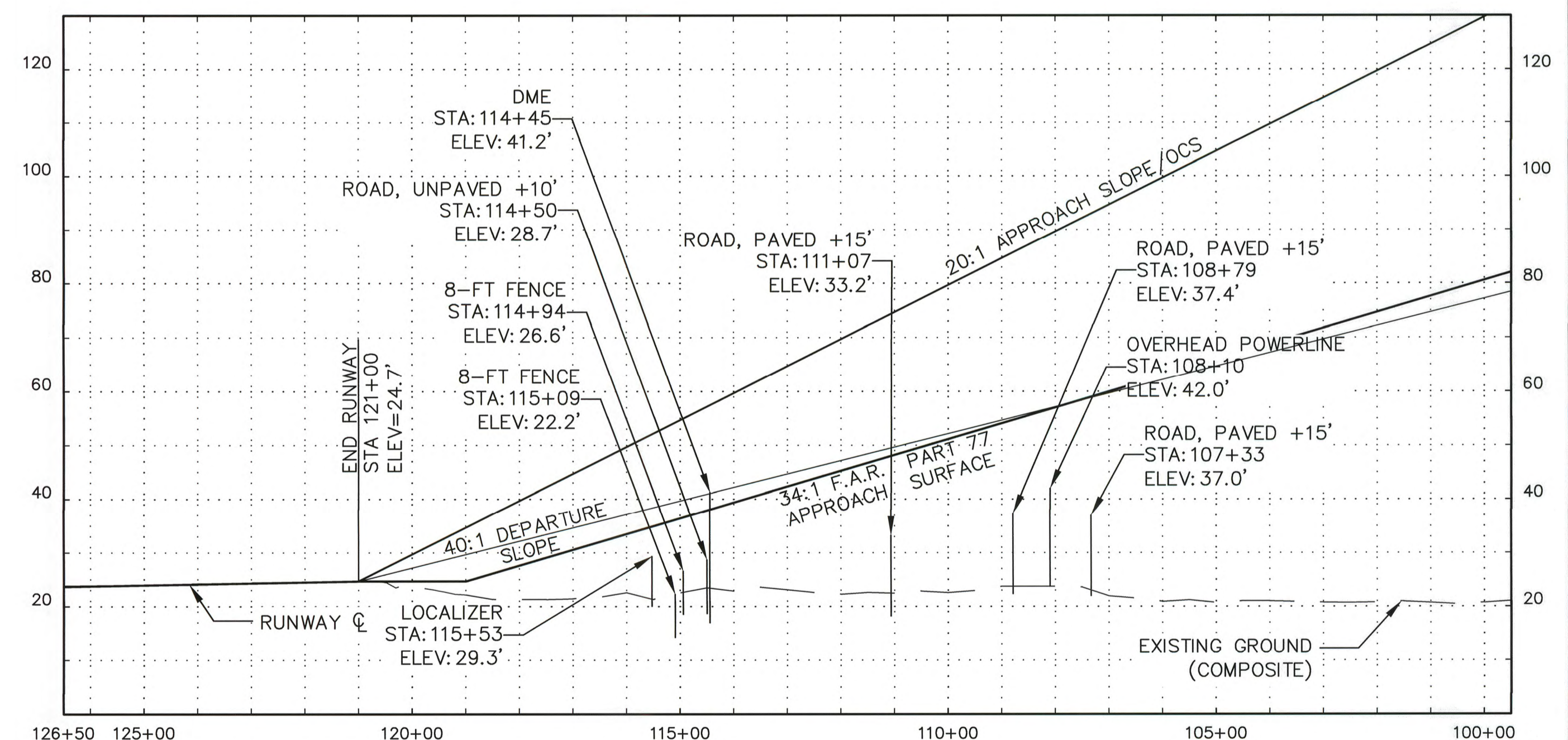
RW 15-33
N15°51'34"W (MEAN GEODETIC)
150'x5900'



RW 33 INNER APPROACH PLAN



RW 15 INNER APPROACH PROFILE



RW 33 INNER APPROACH PROFILE

- NOTES:
- EXISTING GROUND COMPOSITE PROFILES ARE BASED ON THE HIGHEST TERRAIN ACROSS THE WIDTH AND ALONG THE LENGTH OF THE APPROACH SURFACES.
 - THE HIGHEST THRESHOLD SITING CRITERIA FOR RW 15 AND RW 33 IS FOR NON-PRECISION APPROACH BY LARGE AIRPLANES WITH INSTRUMENT MINIMUMS ≥ 1 STATUTE MILE WITH A 20:1 OBSTRUCTION CLEARANCE SURFACE. REFERENCE FAA AC 150/5300-13A, TABLE 3-2, ROW 3.
 - THERE ARE NO THRESHOLD SITING SURFACE OBJECT PENETRATIONS FOR RUNWAY 15 OR RUNWAY 33.

Plotted 9/17/2015 10:02 AM by Matt Majoras
Z:\project\1605.07_DOT_N Aeronautical 2009_Unalakleet_Airport\Civil\ACAD\1605.07-INNER PORTION APPROACH SURFACE.dwg

DESIGN	PRB
DRAWN	PMH
CHECKED	EJG

BY	DATE	REVISIONS
PRB	5/2013	UPDATED TO MATCH AERONAUTICAL SURVEY ELEVATIONS

STATE OF ALASKA
DEPARTMENT OF TRANSPORTATION AND PUBLIC FACILITIES
NORTHERN REGION- DESIGN AND CONSTRUCTION- AVIATION
APPROVED
Albert M. Beck DATE 10/12/15
ALBERT M. L. BECK, P.E. AIRPORT DESIGN GROUP CHIEF

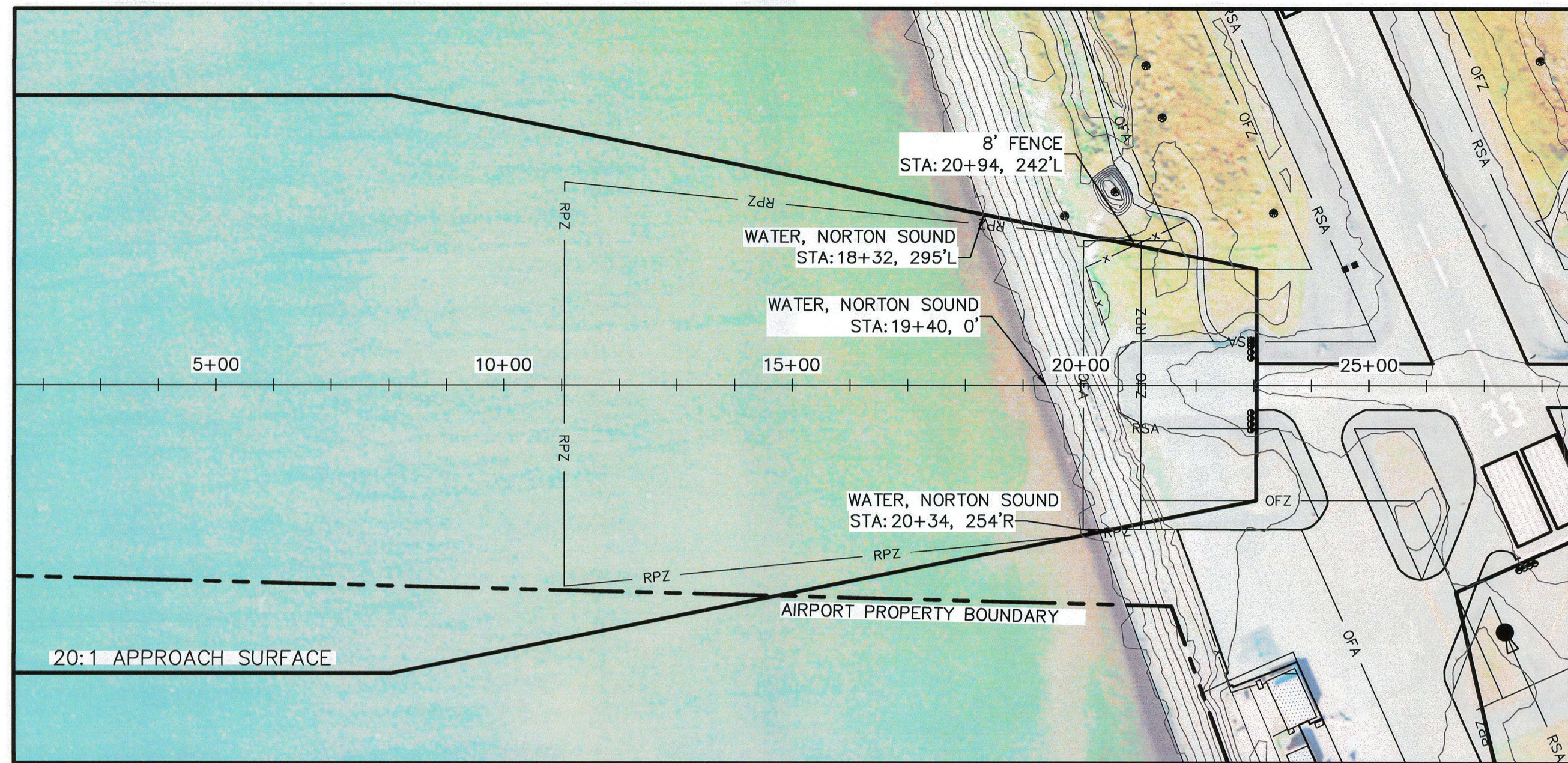
AIRPORT LAYOUT PLAN APPROVED
BY LETTER DATED: _____
AS-BUILT R2
AIRPORTS DIVISION
ALASKAN REGION AAL-601
AIRSPACE: 2008AAL-25NRA

PLANS DEVELOPED BY: **R&M CONSULTANTS, INC.**
THIS ALP SUPERSEDES ALP SIGNED: 1/17/2013
200' 100' 0 200' 400' 600'
HORIZONTAL TO VERTICAL RATIO = 10:1

**UNALAKLEET AIRPORT
AIRPORT LAYOUT PLAN
INNER PORTION OF THE APPROACH SURFACE
(RW 15-33)**

SHEET
5
OF
8

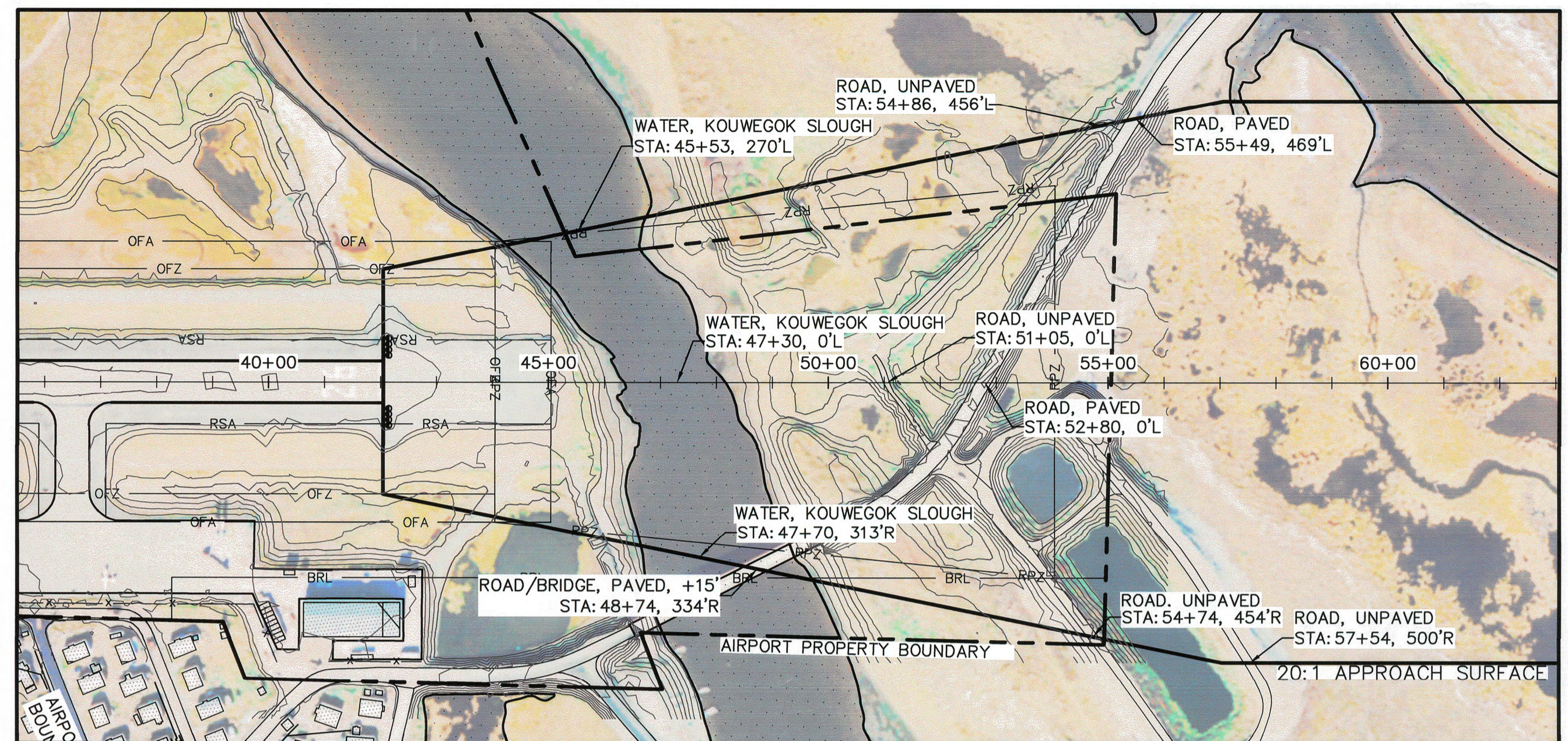
Plotted 9/17/2015 10:03 AM by Matt Majoros
Z:\project\1605.07_DOT_N_Aeronautical_2009_Unalakleet_Airport\Civil\ACAD\1605.07-INNER PORTION APPROACH SURFACE.dwg



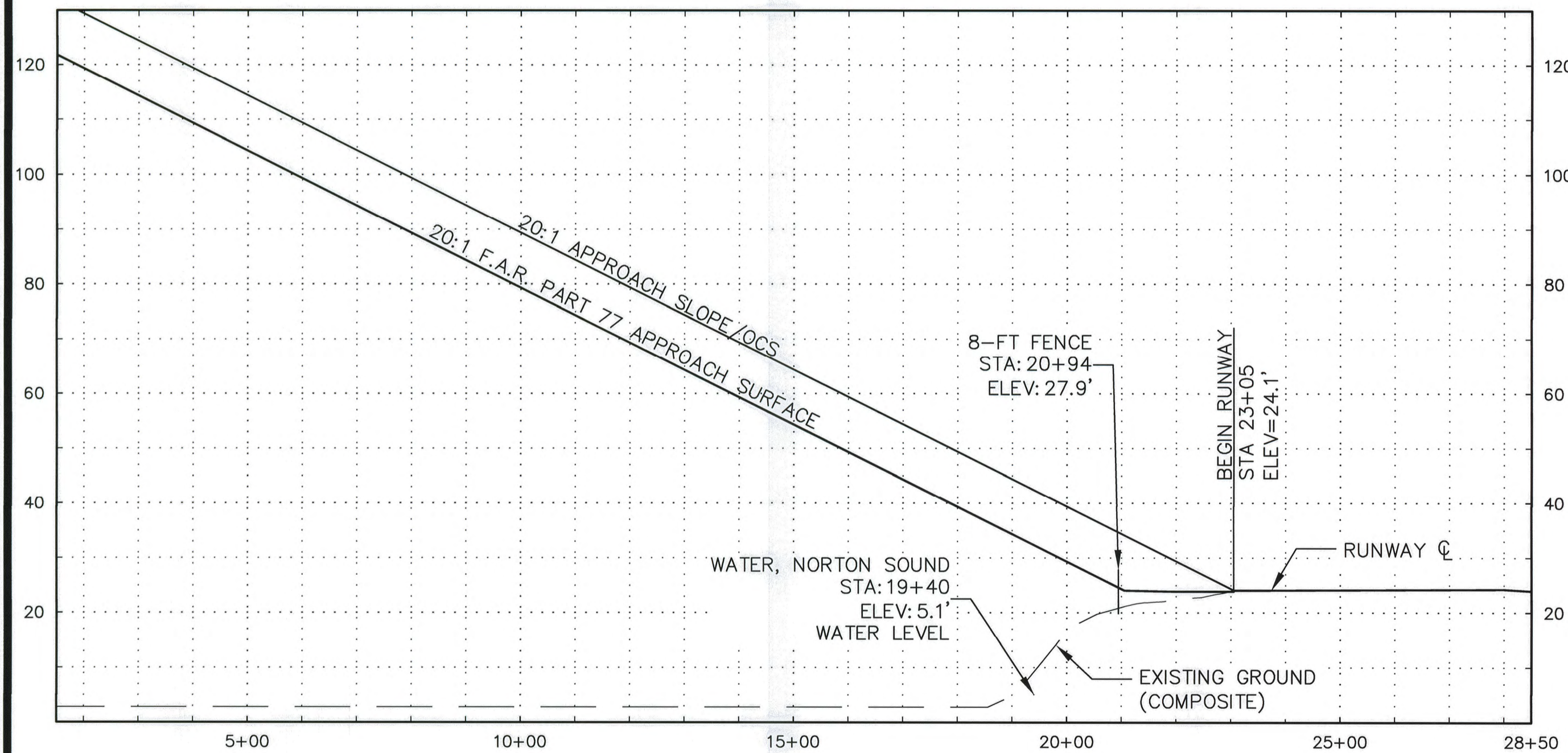
RW 8 INNER APPROACH PLAN

MAG DEC
14°53'59"E
JAN 2010

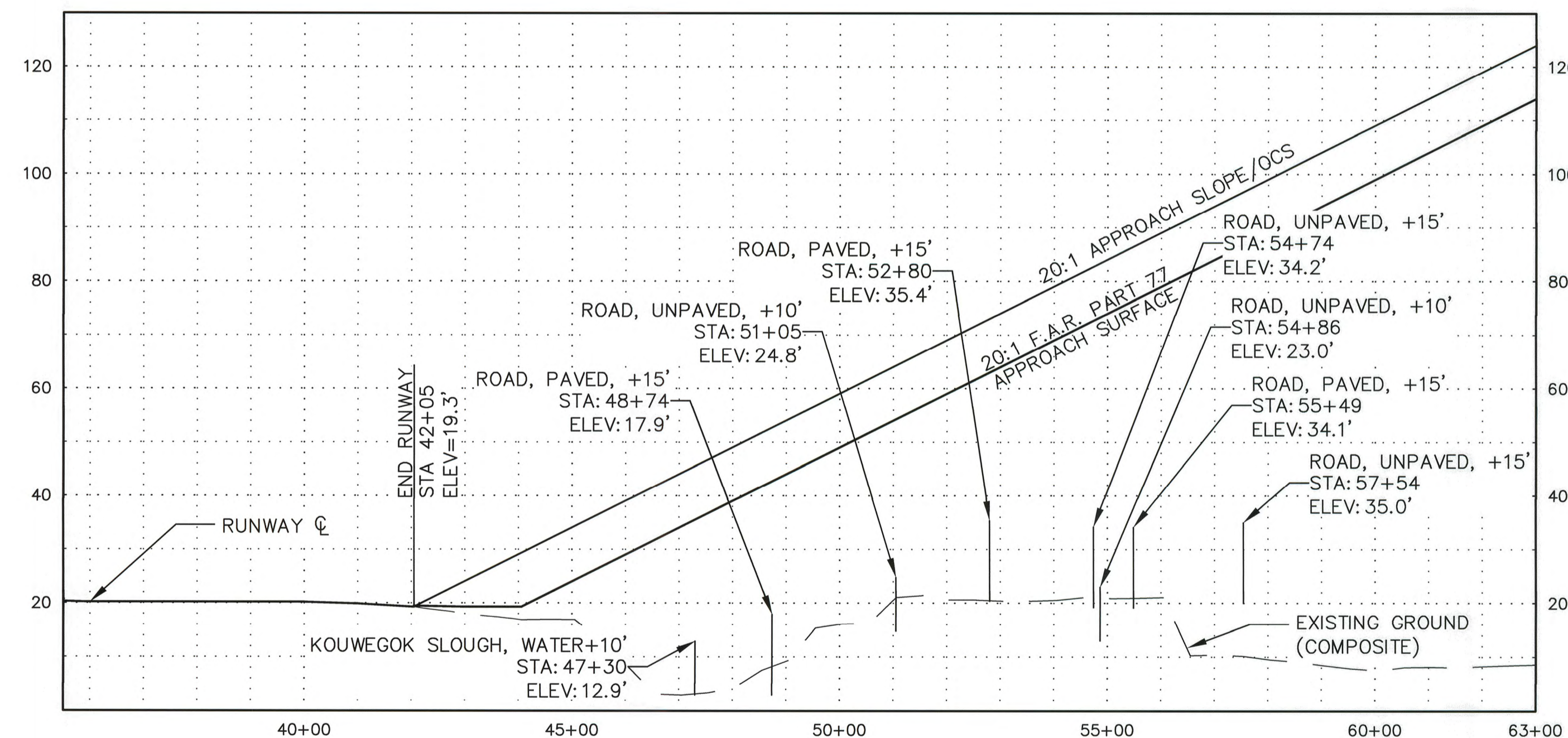
RW 8-26
S81°43'49" (MEAN GEODETIC)
75'x1,900'



RW 26 INNER APPROACH PLAN



RW 8 INNER APPROACH PROFILE



RW 26 INNER APPROACH PROFILE

- NOTES:**
- EXISTING GROUND COMPOSITE PROFILES ARE BASED ON THE HIGHEST TERRAIN ACROSS THE WIDTH AND ALONG THE LENGTH OF THE APPROACH SURFACES.
 - THE HIGHEST THRESHOLD SITING CRITERIA FOR RW 8 AND RW 26 IS FOR VISUAL APPROACH (DAY/NIGHT) BY LARGE AIRPLANES WITH A 20:1 OBSTRUCTION CLEARANCE SURFACE. REFERENCE FAA AC 150/5300-13A, TABLE 3-2, ROW 3.
 - THERE ARE NO THRESHOLD SITING SURFACE OBJECT PENETRATIONS FOR RUNWAY 8 OR 26.

DESIGN	PRB
DRAWN	PMH
CHECKED	EJG

BY	DATE	REVISIONS
PRB	5/2013	UPDATED TO MATCH AERONAUTICAL SURVEY ELEVATIONS

STATE OF ALASKA
DEPARTMENT OF TRANSPORTATION AND PUBLIC FACILITIES
NORTHERN REGION- DESIGN AND CONSTRUCTION- AVIATION
APPROVED
Albert M. L. Beck
ALBERT M. L. BECK, P.E. DATE 10/12/15
AIRPORT DESIGN GROUP CHIEF

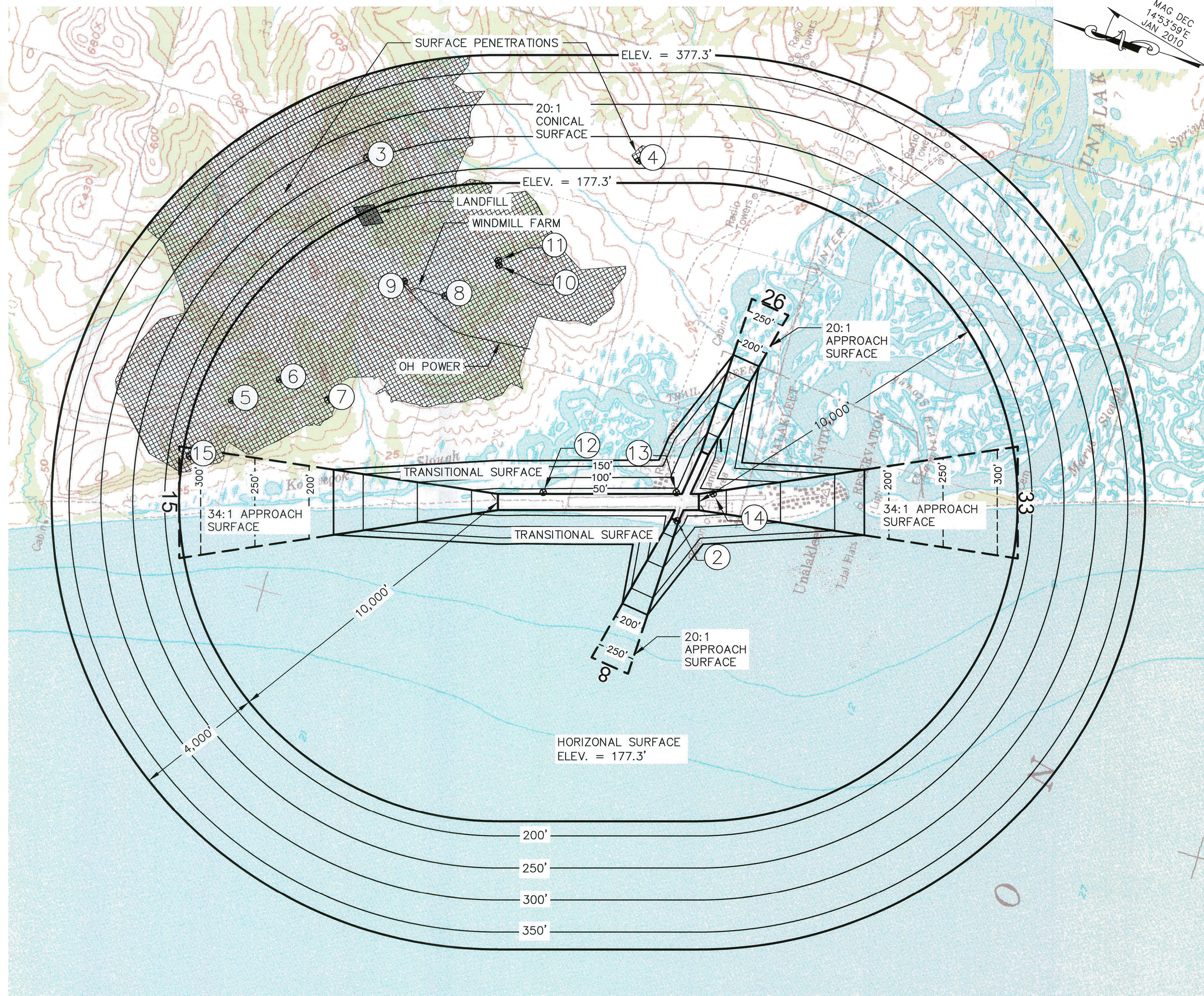
AIRPORT LAYOUT PLAN-APPROVED
BY LETTER DATED: _____
AS-BUILT
AIRPORTS DIVISION
ALASKAN REGION AAL-601
AIRSPACE: 2008AAL-25NRA

PLANS DEVELOPED BY: **R&M CONSULTANTS, INC.**
THIS ALP SUPERSEDES ALP SIGNED: 1/17/2013
200' 100' 0 200' 400' 600'
HORIZONTAL TO VERTICAL RATIO = 10:1

**UNALAKLEET AIRPORT
AIRPORT LAYOUT PLAN
INNER PORTION OF THE APPROACH SURFACE
(RW 8-26)**

SHEET
6 OF
8

Plotted 9/17/2015 10:04 AM by Matt Majoras
Z:\project\1605.07 DOT_N Aeronautical 2009 Unalakleet Airport\Civil\CAD\1605.07-AIRPORT AIRSPACE PLAN.dwg



F.A.R. PART 77 SURFACE OBSTRUCTIONS							
ID#	DESCRIPTION	STATION/ OFFSET	ELEVATION	SURFACE PENETRATED	SURFACE ELEVATION	AMOUNT PENETRATED	DISPOSITION
2	8' FENCE	21+05 / 78' R	28.5	RW 8 INNER APPROACH	24.1	4.4	TO REMAIN
3	TERRAIN/TREES	STA 142+00 / 7,400'R TO STA 302+00 / 3,830'R	177.3-729	CONICAL	177.3-377.3	≤514	TO REMAIN
4	TERRAIN/TREES	STA 137+60 / 10,570'R	209-248	CONICAL	205-236	≤22	TO REMAIN
5	VENT	STA 265+51 / 3,176'R	395.8	HORIZONTAL	177.3	219	TO REMAIN
6	BUILDING	STA 250+42 / 3,838'R	338.0	HORIZONTAL	177.3	161	TO REMAIN
7	BUILDING	STA 235+31 / 3,201'R	218.1	HORIZONTAL	177.3	41	TO REMAIN
8	CATENARY POLE	STA 173+04 / 4,807'R TO STA 211+68 / 6,824'R	183-496	HORIZONTAL	177.3	≤319	TO REMAIN
9	WINDMILL FARM	STA 198+19/6,540'R TO STA 211+38/6,914'R	581-612	HORIZONTAL	177.3	≤434	TO REMAIN. OBSTRUCTION LIGHTS EXIST.
10	VENT	STA 181+64 / 7,418'R	344.0	HORIZONTAL	177.3	167	TO REMAIN
11	BUILDING	STA 181+90 / 7,569'R	337.4	HORIZONTAL	177.3	160	TO REMAIN
12	WINDCONE	STA 167+76 / 298'R	44.2	RW 15 TRANSITIONAL, EAST	33.2	11	TO REMAIN. OBSTRUCTION LIGHT EXISTS.
13	WINDCONE AND SEGMENTED CIRCLE	STA 126+02 / 295'R	41.0	RW 33 TRANSITIONAL, EAST	30.1	11	TO REMAIN. OBSTRUCTION LIGHT EXISTS.
14	DME ANTENNA	114+45 / 257' R	41.2	RW 33 INNER APPROACH	38.1	3	TO REMAIN, OBSTRUCTION LIGHT EXISTS.
15	TERRAIN/TREES	STA 279+00 / 1598'R	388.5	RW 15 APPROACH	312.6	76	TO REMAIN

- NOTES:**
1. MAP SOURCE: USGS QUAD. UNALAKLEET (D-4), ALASKA
 2. CONTOUR INTERVAL= 50'
 3. SEE INNER PORTION OF THE APPROACH PLANS FOR CLOSE-IN OBSTRUCTIONS
 4. AIRPORT ELEVATION= 27.3'

LEGEND	
ITEM	
TERRAIN/TREES OBSTRUCTION	
OBSTRUCTION	

DESIGN	PRB
DRAWN	PMH
CHECKED	EJG

BY	DATE	REVISIONS
PRB	5/2013	UPDATED TO MATCH AERONAUTICAL SURVEY ELEVATIONS

STATE OF ALASKA
DEPARTMENT OF TRANSPORTATION AND PUBLIC FACILITIES
NORTHERN REGION- DESIGN AND CONSTRUCTION- AVIATION
APPROVED
Albert M. L. Beck DATE 10/12/15
ALBERT M. L. BECK, P.E. AIRPORT DESIGN GROUP CHIEF

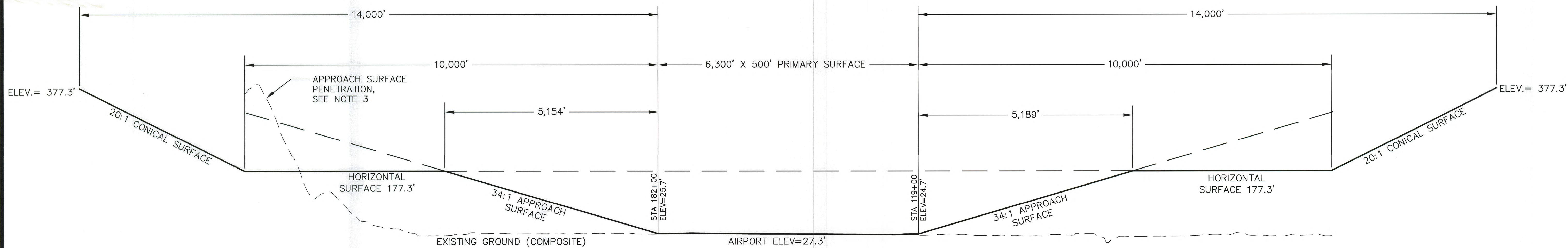
AIRPORT LAYOUT PLAN APPROVED
BY LETTER DATED: *AS-BUILT*
AIRPORTS DIVISION
ALASKAN REGION AAL-601
AIRSPACE: 2008AAL-25NRA

PLANS DEVELOPED BY: **R&M CONSULTANTS, INC.**
THIS ALP SUPERSEDES ALP SIGNED: 1/17/2013

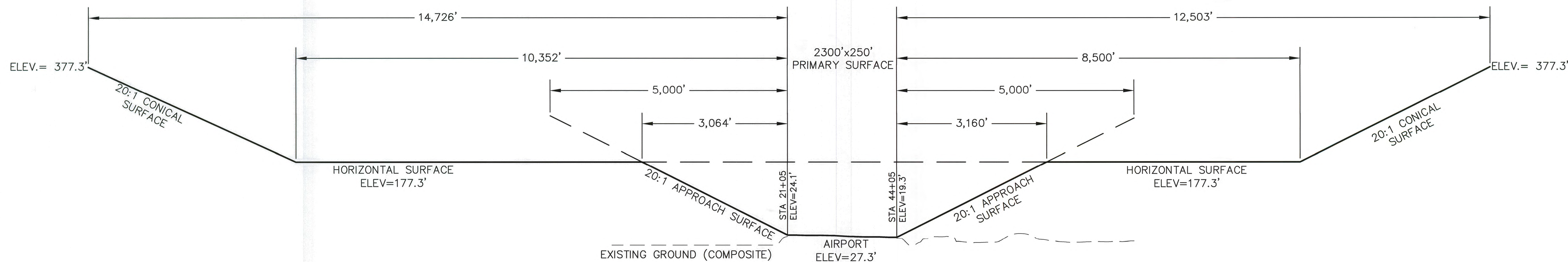
**UNALAKLEET AIRPORT
AIRPORT LAYOUT PLAN
AIRPORT AIRSPACE PLAN**

SHEET
7 OF
8

Plotted 9/17/2015 10:05 AM by Matt Mejoras
Z:\project\1605.07 DOT_N Aeronautical 2009 Unalakleet Airport\Civil\ACAD\1605.07-AIRPORT AIRSPACE PROFILES.dwg



RUNWAY 15-33 AIRSPACE PROFILE



RUNWAY 8-26 AIRSPACE PROFILE

NOTES:

1. EXISTING GROUND COMPOSITE PROFILES ARE BASED ON THE HIGHEST TERRAIN ACROSS THE WIDTH AND ALONG THE LENGTH OF THE APPROACH SURFACES.
2. FOR EACH RUNWAY, EXISTING AND ULTIMATE FAR PART 77 APPROACH SLOPES ARE THE SAME.
3. THIS SURFACE PENETRATION IS ASSOCIATED WITH OBSTRUCTION ID# 15. SEE SHEET 7 AIRPORT AIRSPACE PLAN OBSTRUCTION DATA TABLE.

DESIGN	PRB
DRAWN	PMH
CHECKED	EJG

BY	DATE	REVISIONS
PRB	5/2013	UPDATED TO MATCH AERONAUTICAL SURVEY ELEVATIONS

STATE OF ALASKA
DEPARTMENT OF TRANSPORTATION AND PUBLIC FACILITIES
NORTHERN REGION- DESIGN AND CONSTRUCTION- AVIATION
APPROVED
Albert M. Beck DATE *10/21/15*
ALBERT M. L. BECK, P.E. AIRPORT DESIGN GROUP CHIEF

AIRPORT-LAYOUT-PLAN-APPROVED
BY-LETTER-DATED: _____
AS-BUILT
AIRPORTS DIVISION
ALASKAN REGION AAL-601
AIRSPACE: 2008AAL-25NRA

PLANS DEVELOPED BY: **R&M CONSULTANTS, INC.**
THIS ALP SUPERSEDES ALP SIGNED: 1/17/2013
1200' 0 1200' 2400' 3600'
HORIZONTAL TO VERTICAL RATIO = 10:1

**UNALAKLEET AIRPORT
AIRPORT LAYOUT PLAN
AIRPORT AIRSPACE PROFILES**

SHEET
8 OF
8