



Fact Sheet

Alaska's Statewide Long Range Transportation Plan

Guiding Transportation Development for Alaska's Future

DOT&PF Mission

Keep Alaska Moving through service and infrastructure.

To do this we:

- Provide for the safe and efficient movement of people and goods
- Provide statewide access and connectivity
- Provide access for exploration and development of Alaska's resources

Background

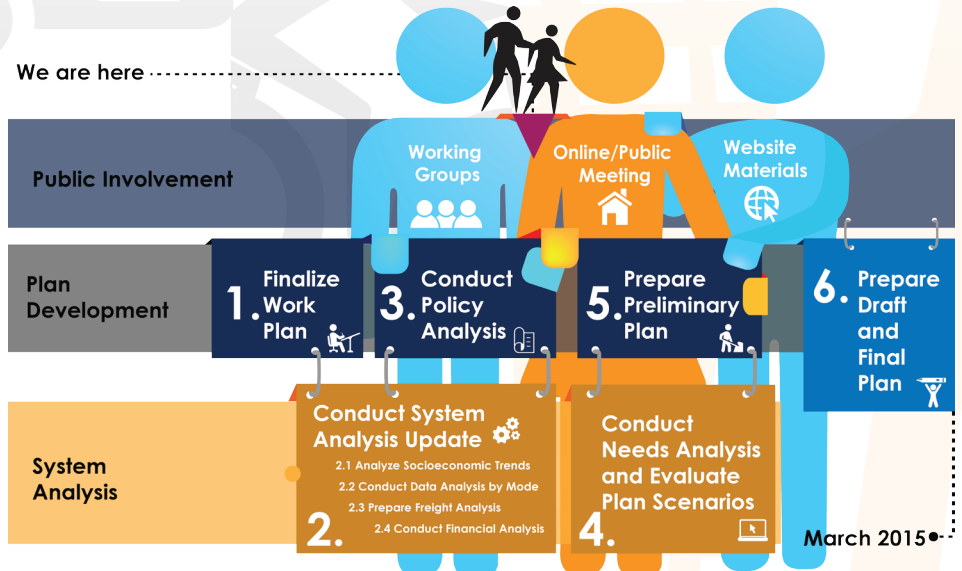
The Alaska Department of Transportation and Public Facilities (DOT&PF) is responsible for updating and maintaining a Statewide Long Range Transportation Plan (LRTP) every five years. The LRTP addresses statewide needs for managing and developing transportation infrastructure for all modes of transportation, communicates issues, and prioritizes solutions that align with the State's goals and priorities. The LRTP also addresses those policy issues and implementing actions for which the state's transportation, social, and economic interests are served through collaboration with other partner agencies and organizations. Finally, the LRTP guides regional and area planning processes, which identify and prioritize regional solutions and identify resources required to implement those solutions. This long-range plan examines both near-term (10 year) and future (20 year) transportation needs, policy issues, funding opportunities, and statewide capital improvement priorities, with a target outlook through 2035.

Plan Elements:

Moving Ahead for Progress in the 21st Century Act (MAP-21) is the federal legislation that guides the development of Alaska's Statewide LRTP. In MAP-21, the metropolitan and statewide transportation planning processes are enhanced to incorporate performance goals, measures, and targets into the process of identifying needed transportation improvements. The long-range plan must describe the performance measures and targets used in assessing system performance and progress in achieving the performance targets. Public involvement remains a hallmark of the planning process.¹

The LRTP will develop or update the following areas:

- » Current system data and trends, policy issues
- » Current and emerging policy issues
- » Operation and maintenance needs by transportation mode
- » Revenue analysis
- » Freight needs and opportunities
- » Policy goals and priorities
- » Performance goals, measures, and targets
- » Strategies and actions
- » 10-year and 20-year priorities and capital investment needs



¹ From "Moving Ahead for Progress in the 21st Century Act (MAP-21), A Summary of Highway Provisions. Federal Highway Administration, July 17, 2012. www.fhwa.dot.gov/map21/summaryinfo.cfm.



Project Fact Sheet

continued...

Contact

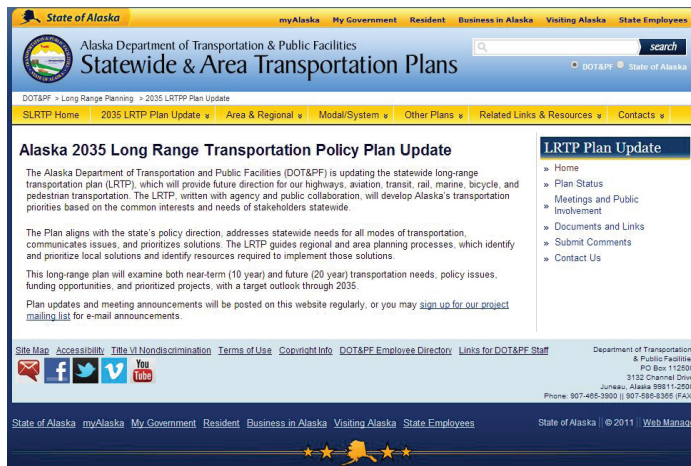
The planning process depends upon open communication with stakeholders, agencies, Alaska residents, and transportation users. We hope you will share your ideas for the future of transportation in Alaska as we develop this comprehensive, statewide plan.

Eric Taylor, Project Manager
 Alaska Department of Transportation and Public Facilities
 PO Box 12500
 MS-2500
 Juneau, AK 99811-2500
 907-465-8958
 E-mail: eric.taylor@alaska.gov

Julie K. Jessen, Public Involvement
 HDR Alaska
 2525 C Street, Ste. 305
 Anchorage, AK 99503
 907-644-2075
 E-mail: julie.jessen@hdrinc.com

Public Involvement

Public open houses were held in Spring 2014 and on-line open houses will be held later this year. At the meetings, DOT&PF will seek input on potential system-wide needs for all modes of transportation.



Please visit our website at www.dot.alaska.gov/lrtpplanupdate to sign up for our mailing list. We want to hear from you!

- *What are the most important transportation issues confronting the state?*
- *What works well today?*
- *What needs improvement now, five years from now, or well into the future?*

